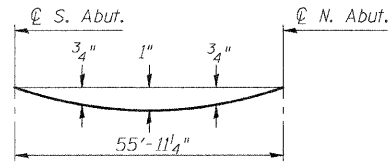


STATE OF ILLINOIS
DEPARTMENT OF TRANSPORTATION

F.A.P. RTE.	SECTION	COUNTY	TOTAL SHEETS	SHEET NO.
310	60-(16B, 16-1B)	MADISON	62	22
STA. 160+24.00				
FED. ROAD DIST. NO.	ILLINOIS	FED. AID PROJECT		
CONTRACT NO. 76567				

Sheet No. 3
12 Sheets



DEAD LOAD DEFLECTION DIAGRAM

(Includes weight of concrete only.)

Note: The above deflections are not to be used in the field if the engineer is working from the grade elevations adjusted for dead load deflections as shown below.

BEAM LINE 1

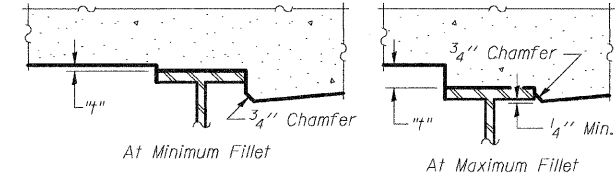
Location	Station	Offset	Theoretical Grade Elevations	Theoretical Grade Elevations Adjusted For Dead Load Deflection
Bk. S. Abut.	16003.915	-4.562	536.577	536.577
☉ S. Abut.	16005.336	-4.570	536.556	536.556
A	16015.283	-4.605	536.417	536.462
B	16025.231	-4.614	536.286	536.361
C	16035.178	-4.598	536.162	536.244
D	16045.125	-4.556	536.047	536.112
E	16055.072	-4.488	535.940	535.968
☉ N. Abut.	16060.970	-1.436	535.880	535.880
Bk. N. Abut.	16062.391	-4.422	535.866	535.866

PROFILE GRADE

Location	Station	Offset	Theoretical Grade Elevations	Theoretical Grade Elevations Adjusted For Dead Load Deflection
Bk. S. Abut.	16001.434	0.000	536.809	536.809
☉ S. Abut.	16002.850	0.000	536.788	536.788
A	16012.762	0.000	536.649	536.694
B	16022.689	0.000	536.517	536.592
C	16032.630	0.000	536.391	536.473
D	16042.585	0.000	536.272	536.337
E	16052.554	0.000	536.160	536.188
☉ N. Abut.	16058.473	0.000	536.096	536.096
Bk. N. Abut.	16059.899	0.000	536.082	536.082

BEAM LINE 2

Location	Station	Offset	Theoretical Grade Elevations	Theoretical Grade Elevations Adjusted For Dead Load Deflection
Bk. S. Abut.	15999.874	2.877	536.955	536.955
☉ S. Abut.	16001.294	2.877	536.935	536.935
A	16011.221	2.823	536.792	536.837
B	16021.149	2.803	536.658	536.733
C	16031.077	2.809	536.531	536.613
D	16041.006	2.840	536.413	536.478
E	16050.934	2.897	536.302	536.330
☉ N. Abut.	16056.820	2.943	536.240	536.240
Bk. N. Abut.	16058.238	2.956	536.226	536.226



To determine "h": After all structural steel has been erected, elevations of the top flanges of the beams shall be taken at intervals shown below. These elevations subtracted from the "Theoretical Grade Elevations Adjusted For Dead Load Deflection" shown below, minus slab thickness, equals the fillet heights "h" above top flange of beams.

FILLET HEIGHTS

BEAM LINE 3

Location	Station	Offset	Theoretical Grade Elevations	Theoretical Grade Elevations Adjusted For Dead Load Deflection
Bk. S. Abut.	15995.848	10.321	537.335	537.335
☉ S. Abut.	15997.264	10.311	537.313	537.313
A	16007.173	10.255	537.168	537.213
B	16017.083	10.224	537.031	537.106
C	16026.992	10.219	536.901	536.983
D	16036.902	10.240	536.780	536.845
E	16046.811	10.286	536.666	536.694
☉ N. Abut.	16052.686	10.326	536.602	536.602
Bk. N. Abut.	16054.102	10.337	536.588	536.588

LOCAL TANGENT

Location	Station	Offset	Theoretical Grade Elevations	Theoretical Grade Elevations Adjusted For Dead Load Deflection
Bk. S. Abut.	15994.883	12.111	537.426	537.426
☉ S. Abut.	15996.298	12.101	537.404	537.404
A	16006.203	12.042	537.258	537.303
B	16016.108	12.009	537.120	537.195
C	16026.013	12.000	536.990	537.072
D	16035.918	12.019	536.868	536.933
E	16045.822	12.063	536.754	536.782
☉ N. Abut.	16051.690	12.101	536.685	536.685
Bk. N. Abut.	16053.109	12.111	536.669	536.669

BEAM LINE 4

Location	Station	Offset	Theoretical Grade Elevations	Theoretical Grade Elevations Adjusted For Dead Load Deflection
Bk. S. Abut.	15991.838	17.770	537.715	537.715
☉ S. Abut.	15993.251	17.759	537.693	537.693
A	16003.141	17.692	537.545	537.590
B	16013.032	17.651	537.405	537.480
C	16022.922	17.635	537.272	537.354
D	16032.813	17.645	537.148	537.213
E	16042.704	17.681	537.031	537.059
☉ N. Abut.	16048.568	17.715	536.966	536.966
Bk. N. Abut.	16049.981	17.724	536.950	536.950

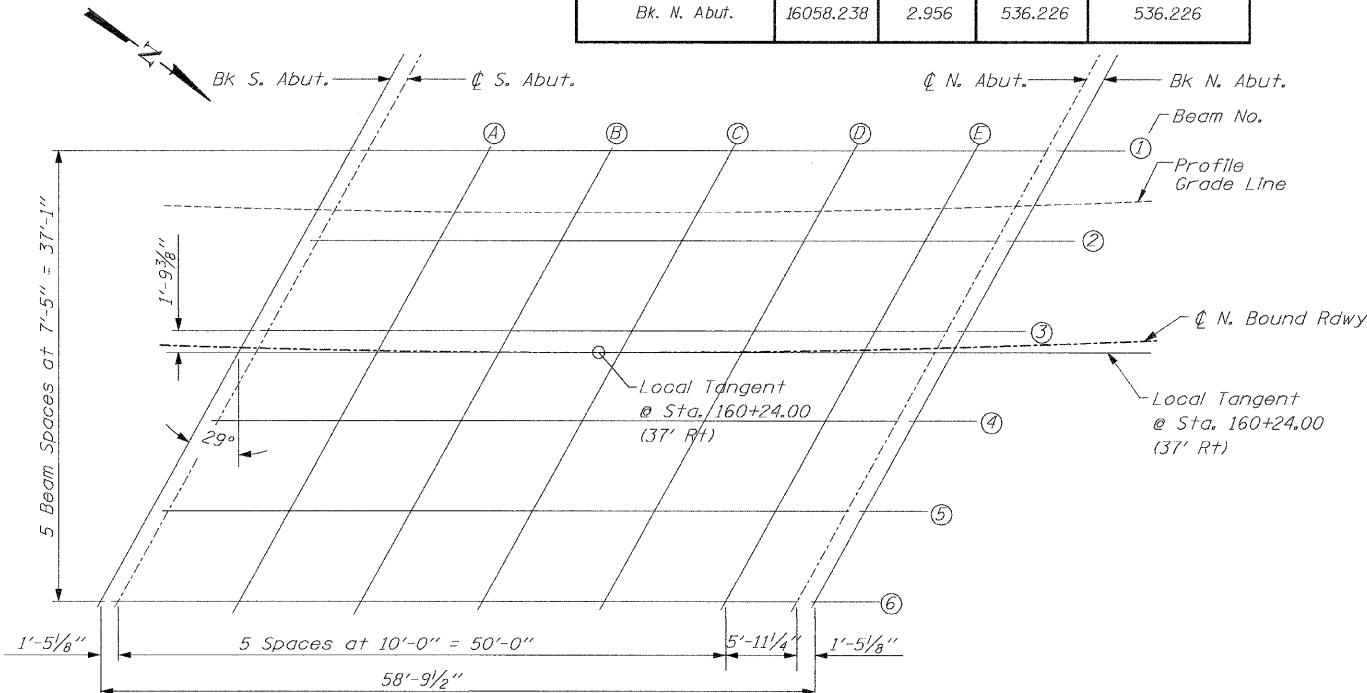
BEAM LINE 5

Location	Station	Offset	Theoretical Grade Elevations	Theoretical Grade Elevations Adjusted For Dead Load Deflection
Bk. S. Abut.	15987.843	25.223	538.097	538.097
☉ S. Abut.	15989.253	25.210	538.074	538.074
A	15999.125	25.133	537.923	537.968
B	16008.996	25.082	537.780	537.855
C	16018.868	25.056	537.645	537.727
D	16028.740	25.056	537.517	537.582
E	16038.611	25.081	537.397	537.425
☉ N. Abut.	16044.464	25.108	537.330	537.330
Bk. N. Abut.	16045.875	25.116	537.314	537.314

BEAM LINE 6

Location	Station	Offset	Theoretical Grade Elevations	Theoretical Grade Elevations Adjusted For Dead Load Deflection
Bk. S. Abut.	15983.863	32.680	538.479	538.479
☉ S. Abut.	15985.271	32.665	538.456	538.456
A	15995.123	32.578	538.302	538.347
B	16004.976	32.516	538.156	538.231
C	16014.829	32.479	538.018	538.100
D	16024.682	32.469	537.887	537.952
E	16034.536	32.483	537.765	537.793
☉ N. Abut.	16040.377	32.504	537.696	537.696
Bk. N. Abut.	16041.785	32.510	537.679	537.679

Note: Offsets referenced to Profile Grade Line



PLAN

DESIGNED	R.P.B.
CHECKED	G.E.P.
DRAWN	B.A.D.
CHECKED	J.L.G.

E-S 12-21-00

TOP OF SLAB ELEVATIONS
FAP 310 (US 67) OVER TRIB
SOUTH BRANCH OF PIASA CREEK
SECTION 60-(16B, 16-1B)
MADISON COUNTY STA 160+24.00
SN 060-0328