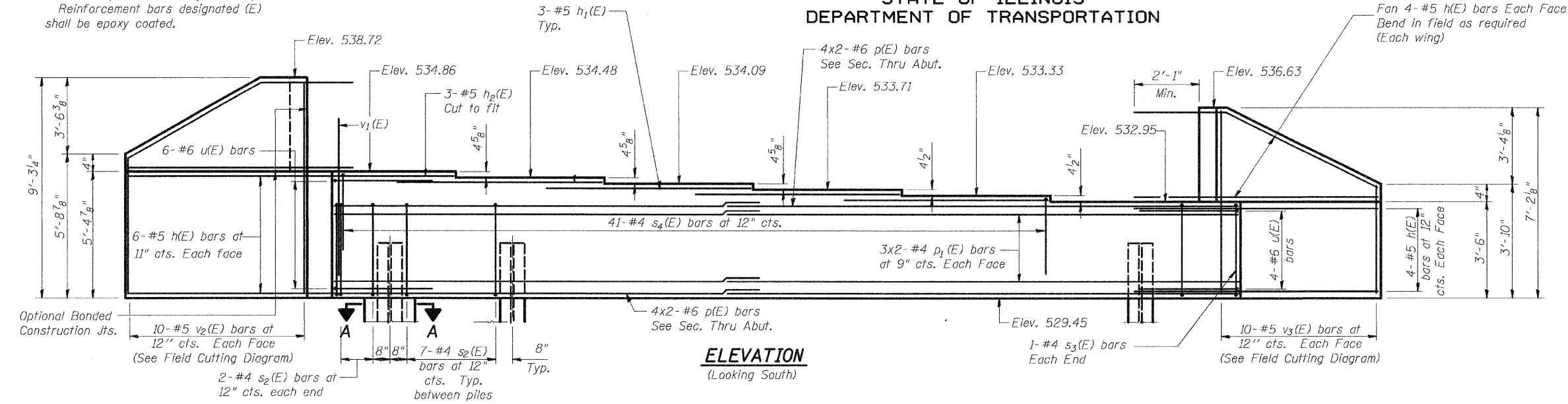


STATE OF ILLINOIS
DEPARTMENT OF TRANSPORTATION

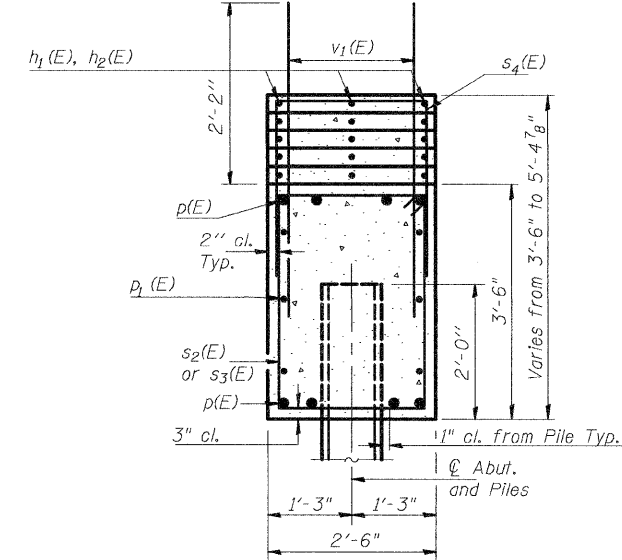
F.A.P. RTE.	SECTION	COUNTY	TOTAL SHEETS	SHEET NO.
310	60-(16B, 16-1B)	MADISON	62	27
STA. 160+24.00				
FED. ROAD DIST. NO. ILLINOIS FED. AID PROJECT				
CONTRACT NO. 76567				

Sheet No. 8
12 Sheets

Notes: Pour steps monolithically with cap.
Reinforcement bars designated (E)
shall be epoxy coated.



ELEVATION
(Looking South)



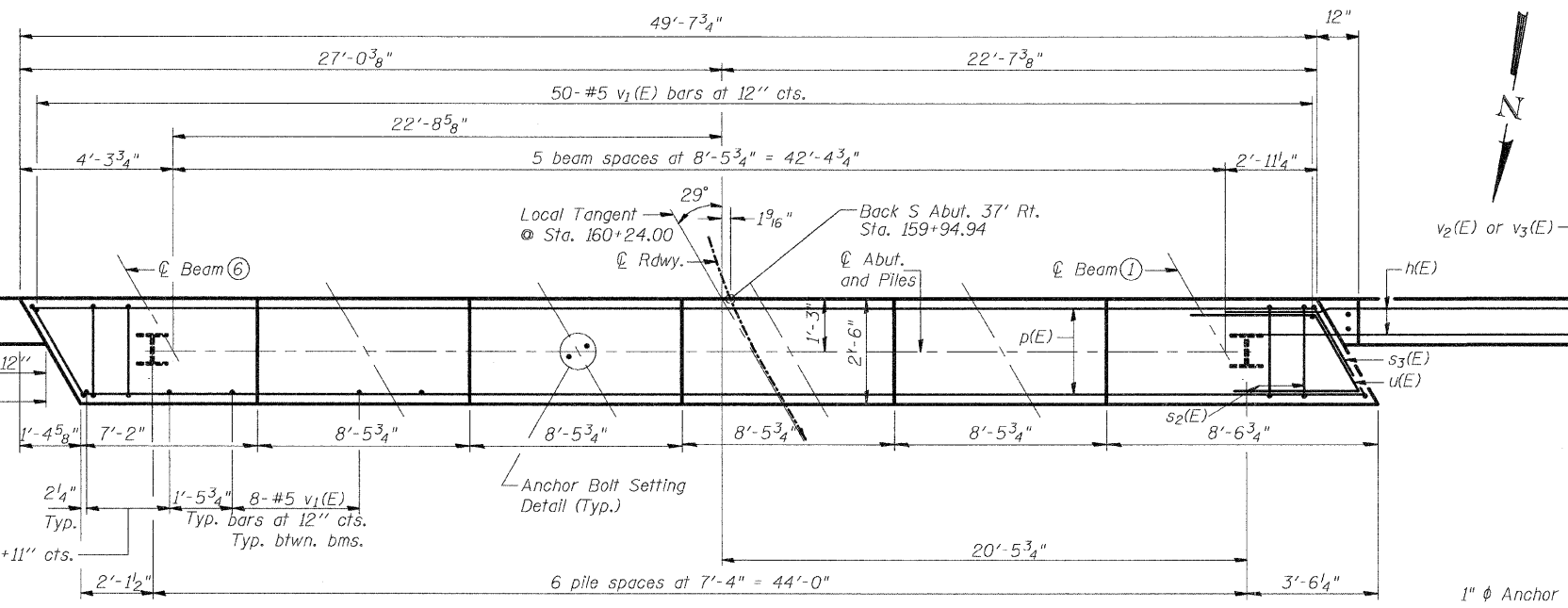
SEC. THRU ABUT.
(Dimensions @ Right Angles)

MIN. BAR LAP
#4 BAR = 2'-5"
#6 BAR = 3'-7"

Notes: Bars indicated thus 3x2-#6 etc. indicates
3 lines of bars with 2 lengths per line.

PILE DATA

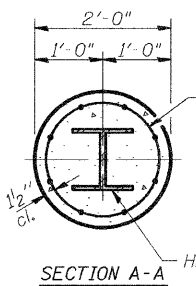
Type: HP12x53
Nominal Required Bearing: 418 kips
Allowable Resistance Available: 139 kips
Est. Length: 41'
No. Required: 6 + 1 Test Pile
The Steel H-Piles shall be according to
AASHTO M270 Grade 50.
The test piles shall be driven to 110 percent
of the Nominal Required Bearing indicated
in the pile data information.



PLAN

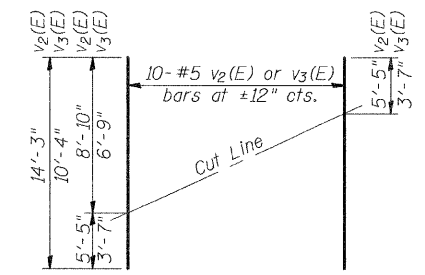
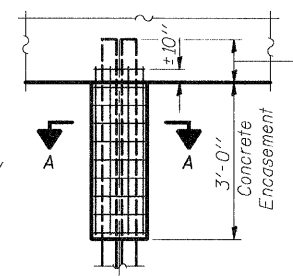
1" φ Anchor bolt (typ)
see sht. 10 of 12 for
installation.

ANCHOR BOLT SETTING DETAIL



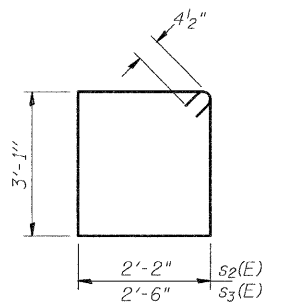
Welded wire fabric
6 x 6-W4.0 x W4.0
weighing 58#/100 sq. ft.
The cost of Excavation,
Concrete Encasement and
Reinforcement is included
with Furnishing Piles.
Forms for Encasement may
be omitted when soil
conditions permit.

PILE ENCASEMENT DETAIL

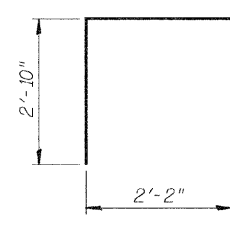


FIELD CUTTING DIAGRAM

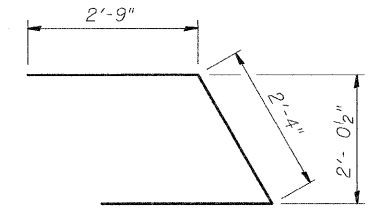
Order v2(E) & v3(E) full length. Cut as shown
and use remainder of bars in opposite face.



BARS s2(E) & s3(E)



BAR s4(E)



BAR u(E)

BILL OF MATERIAL

Bar	No.	Size	Length	Shape
h(E)	36	#5	12'-11"	—
h1(E)	12	#5	10'-0"	—
h2(E)	3	#5	8'-2"	—
p(E)	16	#6	26'-8"	—
p1(E)	12	#4	25'-11"	—
s2(E)	46	#4	11'-3"	□
s3(E)	2	#4	11'-11"	□
s4(E)	41	#4	7'-10"	□
u(E)	10	#6	7'-10"	—
v1(E)	98	#5	4'-4"	—
v2(E)	10	#5	14'-3"	—
v3(E)	10	#5	10'-4"	—
Concrete Structures		Cu. Yd.	25.2	
Reinforcement Bars		Pound	3090	
Epoxy Coated				
Structure Excavation		Cu. Yd.	20.5	
Furnishing Steel				
Piles HP12x53		Foot	246	
Driving Piles		Foot	246	
Test Pile HP12x53		Each	1	

SOUTH ABUTMENT
FAP 310 (US 67) OVER TRIB
SOUTH BRANCH OF PIASA CREEK
SECTION 60-(16B, 16-1B)
MADISON COUNTY STA 160+24.00
SN 060-0328

DESIGNED	R.P.B.
CHECKED	M.R.E.
DRAWN	M.R.E.
CHECKED	R.P.B.

AI-L 12/21/00