

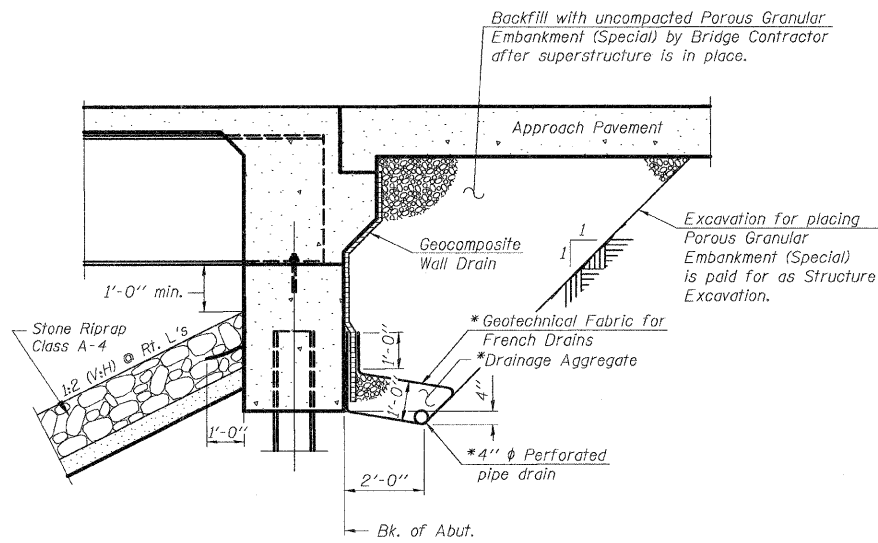
STATE OF ILLINOIS  
DEPARTMENT OF TRANSPORTATION

F.A.P. RTE.	SECTION	COUNTY	TOTAL SHEETS	SHEET NO.
310	60-(16B, 16-1B)	MADISON	62	33
STA. 165+71.94				
FED. ROAD DIST. ILLINOIS			FED. AID PROJECT	
CONTRACT NO. 76567				

Sheet No. 2  
13 Sheets

**GENERAL NOTES**

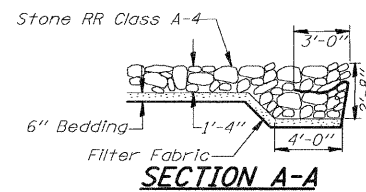
- Fasteners shall be AASHTO M164 Type 1, mechanically galvanized bolts. Bolts  $\frac{3}{4}$  in.  $\emptyset$ , holes  $\frac{5}{8}$  in.  $\emptyset$ , unless otherwise noted.
- Calculated weight of Structural Steel = 91,840 lbs. (M 270, grade 50) = 14,690 lbs. (M 270, grade 36)
- No field welding is permitted except as specified in the contract documents.
- Reinforcement bars shall conform to the requirements of ASTM A 706 Gr 60 (IL Modified). See Special Provisions
- Reinforcement bars designated (E) shall be epoxy coated.
- The Inorganic Zinc Rich Primer / Acrylic / Acrylic Paint System shall be used for shop and field painting of new structural steel except where otherwise noted. The color of the final finish coat for all interior steel surfaces shall be gray, Munsell No. 5B 7/1. The color of the final finish coat for the exterior and bottom flange of the fascia beams shall be Interstate Green, Munsell No. 7.5G 4/8. See Special Provision for "Cleaning and Painting New Metal Structures".
- Layout of slope protection system may be varied in the field to suit ground conditions as directed by the Engineer.
- The embankment configuration shown shall be the minimum that must be placed and compacted prior to construction of the abutments.
- The Contractor shall drive test piles to 110% of the nominal required bearing specified in production locations at substructures specified or approved by the Engineer before ordering the remainder of piles.
- Load carrying components designated "NTR" shall conform to the Supplemental Requirements for Notch Toughness, Zone 2.



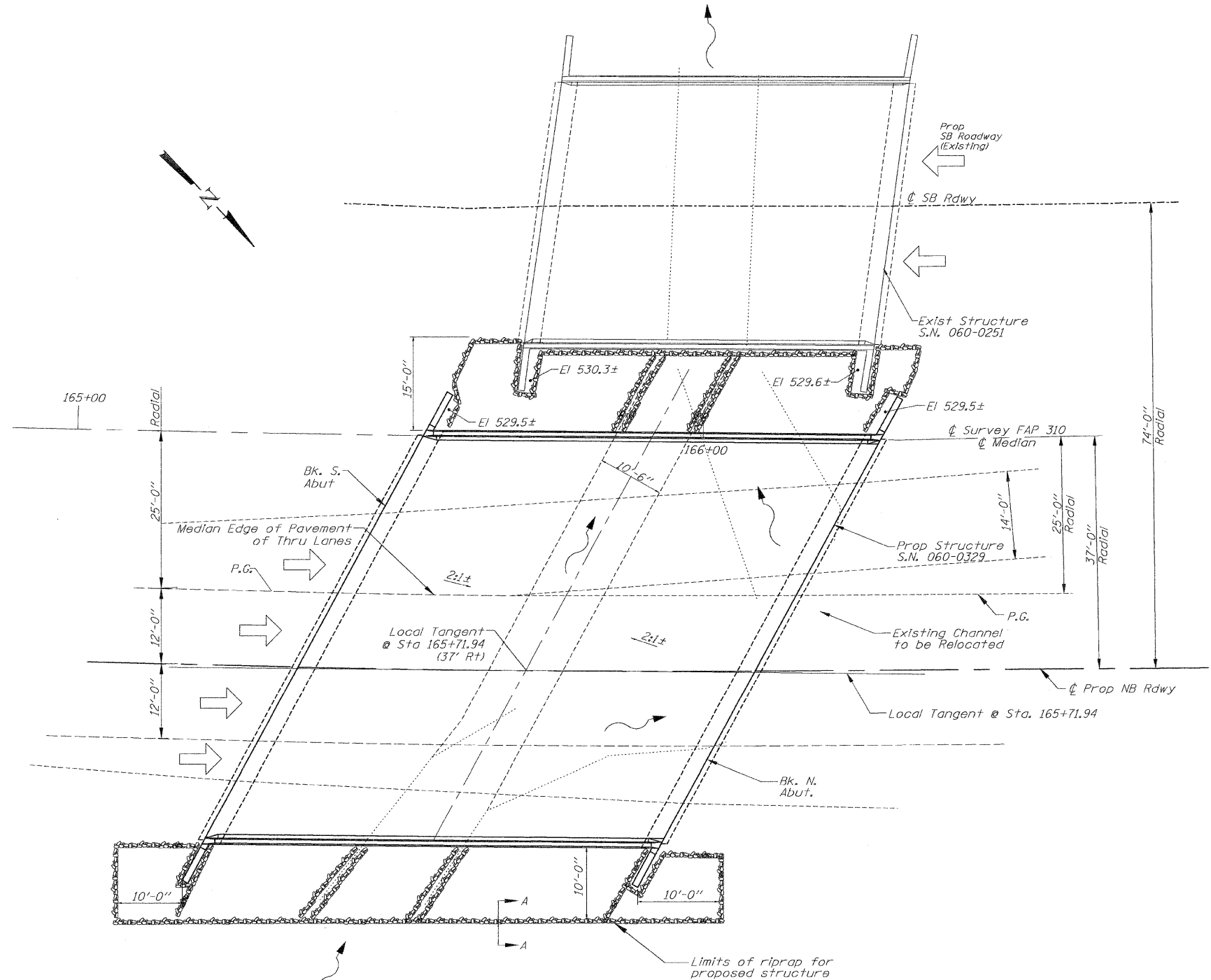
**SECTION THRU INTEGRAL ABUTMENT**  
(Horiz. dim. @ Rt. L's)

\* Included in the cost of Pipe Underdrains for Structures.

Note:  
All drainage system components shall extend to 2'-0" from the end of each wingwall except an outlet pipe shall extend until intersecting with the side slopes. The pipes shall drain into concrete headwalls. (See Article 601.05 of the Standard Specifications and Highway Standard 601101).



**SECTION A-A**



**CHANNEL RELOCATION SKETCH**

Reference Roadway Plans  
for relocated channel length

**RIPRAP DETAILS**  
**FAP 310 (US 67) OVER**  
**SOUTH BRANCH OF PIASA CREEK**  
**SECTION 60-(16B, 16-1B)**  
**MADISON COUNTY STA 165+71.94**  
**SN 060-0329**

**HR** HURST-ROSCHKE ENGINEERS, INC.  
CONSULTING ENGINEERS & ARCHITECTS  
1400 E. TREMONT ST.  
HILLSBORO, ILLINOIS 62049

DESIGNED: J.L.G. CHECKED: R.P.B.  
DRAWN: J.L.G. CHECKED: R.P.B.

Rev. 1/19/01