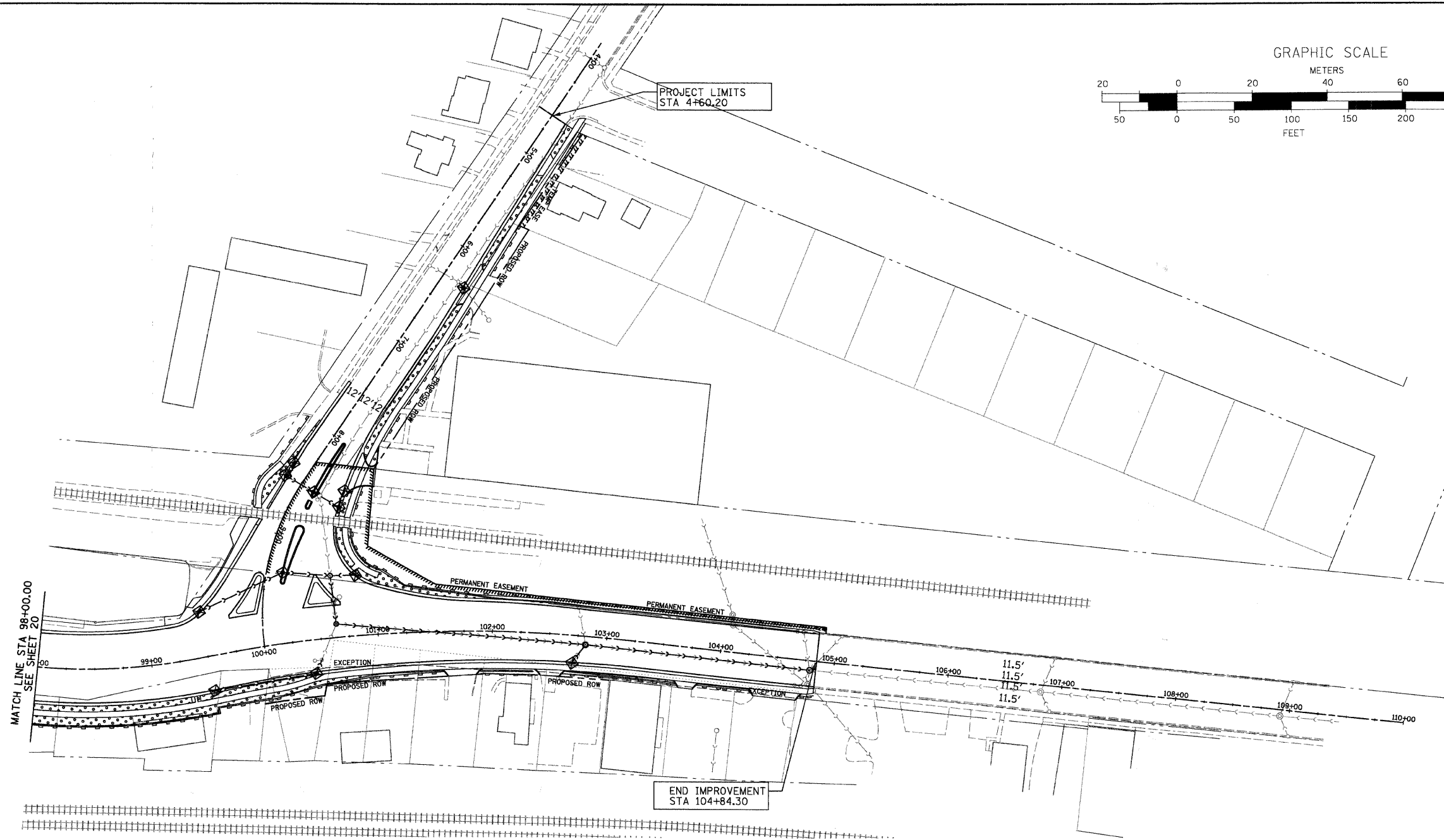
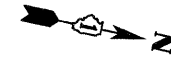
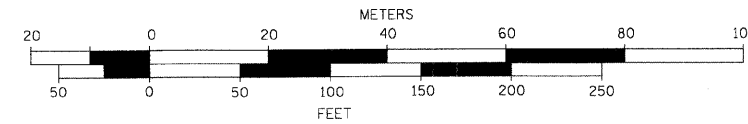


CONTRACT NO.: 83943

F.A.U. RTE.	SECTION	COUNTY	TOTAL SHEETS	SHEET NO.
3887	96-00159-00-CH	KANE	70	21
STA. 98+00.00		TO STA. 104+84.30		
FED. ROAD DIST. NO.	ILLINOIS	FED. AID PROJECT		

GRAPHIC SCALE



EROSION CONTROL LEGEND

- PERIMETER EROSION BARRIER
- TEMPORARY EROSION CONTROL SEEDING
- INLET FILTERS

2/12/2008 H:\ELGIN\12981\1\DESIGN\ADON\21 ERS02.DGN

RHA&A

Robert H. Anderson & Associates, Inc.
 Consulting Engineers
 Timbers Professional Center
 220 West River Drive, St. Charles, IL 60174
 Phone - 630.584.3530 Fax - 630.584.3047

REVISIONS	
NAME	DATE

ILLINOIS DEPARTMENT OF TRANSPORTATION
 ILLINOIS ROUTE 31 AND WING STREET

EROSION AND SEDIMENT CONTROL PLAN
 STA 98+00.00 TO STA 104+84.30

SCALE: VERT. 1"=50'
 HORIZ. 1"=50'
 DATE: FEBRUARY 13, 2008

DRAWN BY: TC
 DESIGN BY: TC
 CHECKED BY: KMA