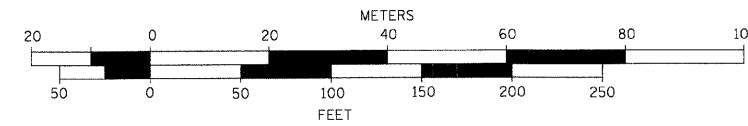


NOTES:

1. RIM ELEVATIONS EQUAL FLOWLINE ELEVATIONS.
2. STRUCTURES THAT WILL BE IMPACTED BY THE PROPOSED IMPROVEMENTS WILL BE RELOCATED OR ADJUSTED BY THEIR RESPECTIVE UTILITIES.
3. PIPE UNDERDRAINS 4" WILL BE INSTALLED AT LOW POINTS WHERE POROUS GRANULAR EMBANKMENT SUBGRADE WILL BE INSTALLED. THE UNDERDRAINS WILL BE CONNECTED TO NEAREST DRAINAGE STRUCTURE TO CREATE POSITIVE DRAINAGE.
4. SEE SHEET 45 DETAIL BDOT FOR CONNECTION OF PROPOSED STORM SEWER TO EXISTING SEWER.

CLASS D PATCHES

GRAPHIC SCALE

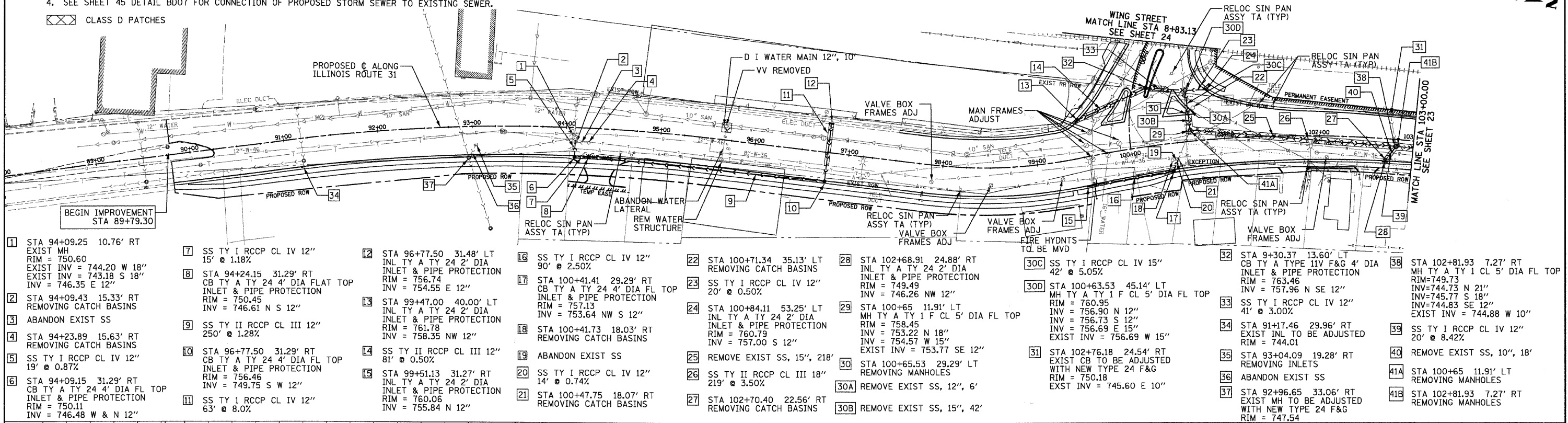


F.A.U. RTE.	SECTION	COUNTY	TOTAL SHEETS	SHEET NO.
3887	96-00159-00-CH	KANE	70	22
STA. 89+79.30		TO STA. 103+00.00		
FED. ROAD DIST. NO.		ILLINOIS	FED. AID PROJECT	

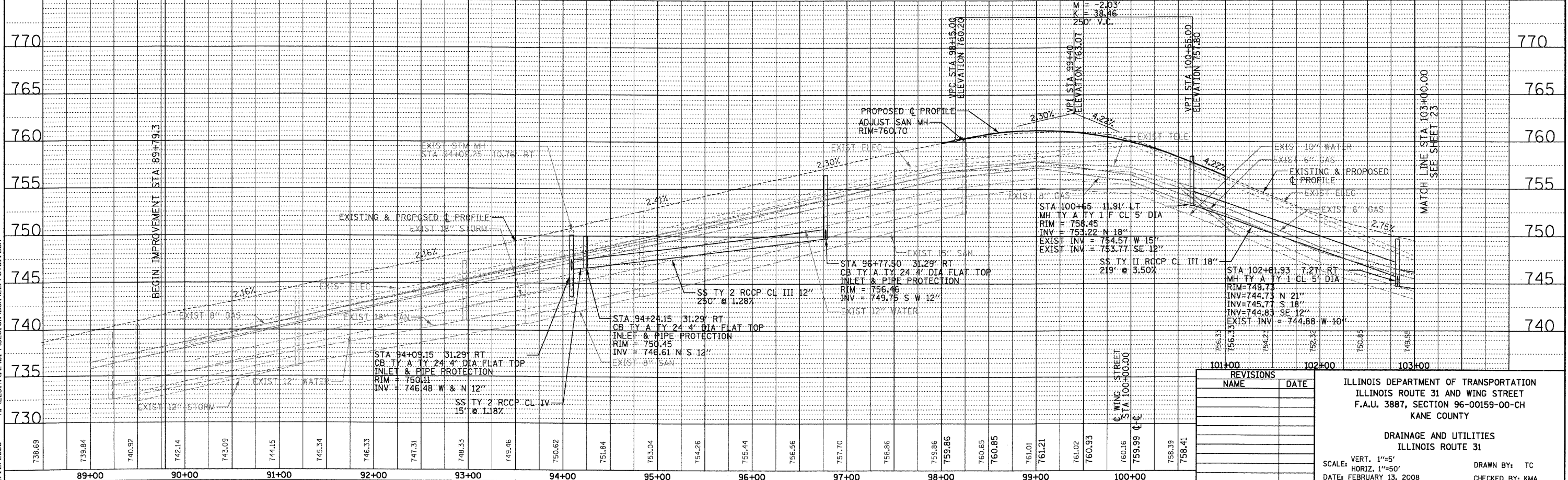
CONTRACT NO.: 83943

DATE	
BY	
DESIGNED	
PLANNED	
NOTED	
CHECKED	
NO.	

DATE	
BY	
DESIGNED	
PLANNED	
NOTED	
CHECKED	
NO.	



- | | | | | | | | |
|---|--|--|---|--|---|---|---|
| 1 STA 94+09.25 10.76' RT EXIST MH RIM = 750.60 EXIST INV = 744.20 W 18" EXIST INV = 743.18 S 18" INV = 746.35 E 12" | 7 SS TY I RCCP CL IV 12" 15' @ 1.18% | 12 STA 96+77.50 31.48' LT INLET & PIPE PROTECTION RIM = 756.74 INV = 754.55 E 12" | 16 SS TY I RCCP CL IV 12" 90' @ 2.50% | 22 STA 100+71.34 35.13' LT REMOVING CATCH BASINS RIM = 749.49 INV = 746.26 NW 12" | 28 STA 102+68.91 24.88' RT INLET & PIPE PROTECTION RIM = 758.45 INV = 753.22 N 18" EXIST INV = 753.77 SE 12" | 32 STA 9+30.37 13.60' LT CB TY A TYPE 11V F&G 4' DIA INLET & PIPE PROTECTION RIM = 763.46 INV = 757.96 N SE 12" | 38 STA 102+81.93 7.27' RT MH TY A TY 1 CL 5' DIA FL TOP RIM=749.73 INV=744.73 N 21" INV=745.77 S 18" INV=744.83 SE 12" EXIST INV = 744.88 W 10" |
| 2 STA 94+09.43 15.33' RT REMOVING CATCH BASINS | 8 STA 94+24.15 31.29' RT CB TY A TY 24 4' DIA FLAT TOP INLET & PIPE PROTECTION RIM = 750.45 INV = 746.61 N S 12" | 13 STA 99+47.00 40.00' LT INLET & PIPE PROTECTION RIM = 761.78 INV = 758.35 NW 12" | 17 STA 100+41.41 29.29' RT CB TY A TY 24 4' DIA FL TOP INLET & PIPE PROTECTION RIM = 757.13 INV = 753.64 NW S 12" | 24 STA 100+84.11 53.25' LT INLET & PIPE PROTECTION RIM = 760.79 INV = 757.00 S 12" | 29 STA 100+65 11.91' LT MH TY A TY 1 F CL 5' DIA FL TOP RIM = 758.45 INV = 753.22 N 18" EXIST INV = 753.77 SE 12" | 33 SS TY I RCCP CL IV 12" 41' @ 3.00% | 39 SS TY I RCCP CL IV 12" 20' @ 8.42% |
| 3 ABANDON EXIST SS | 9 SS TY II RCCP CL III 12" 250' @ 1.28% | 14 SS TY II RCCP CL III 12" 81' @ 0.50% | 18 STA 100+41.73 18.03' RT REMOVING CATCH BASINS | 25 REMOVE EXIST SS, 15", 218' | 30 STA 100+65.53 29.29' LT REMOVING MANHOLES RIM = 750.18 EXST INV = 745.60 E 10" | 34 STA 91+17.46 29.96' RT EXIST INL TO BE ADJUSTED RIM = 744.01 | 40 REMOVE EXIST SS, 10", 18' |
| 4 STA 94+23.89 15.63' RT REMOVING CATCH BASINS | 10 STA 96+77.50 31.29' RT CB TY A TY 24 4' DIA FL TOP INLET & PIPE PROTECTION RIM = 756.46 INV = 749.75 S W 12" | 15 STA 99+51.13 31.27' RT INLET & PIPE PROTECTION RIM = 760.06 INV = 755.84 N 12" | 19 ABANDON EXIST SS | 26 SS TY II RCCP CL III 18" 219' @ 3.50% | 30A REMOVE EXIST SS, 12", 6' | 35 STA 93+04.09 19.28' RT REMOVING INLETS | 41A STA 100+65 11.91' LT REMOVING MANHOLES |
| 5 SS TY I RCCP CL IV 12" 19' @ 0.87% | 11 SS TY I RCCP CL IV 12" 63' @ 8.0% | 21 STA 100+47.75 18.07' RT REMOVING CATCH BASINS | 20 SS TY I RCCP CL IV 12" 14' @ 0.74% | 27 STA 102+70.40 22.56' RT REMOVING CATCH BASINS | 30B REMOVE EXIST SS, 15", 42' | 36 ABANDON EXIST SS | 41B STA 102+81.93 7.27' RT REMOVING MANHOLES |
| 6 STA 94+09.15 31.29' RT CB TY A TY 24 4' DIA FL TOP INLET & PIPE PROTECTION RIM = 750.11 INV = 746.48 W & N 12" | | | | | | 37 STA 92+96.65 33.06' RT EXIST MH TO BE ADJUSTED WITH NEW TYPE 24 F&G RIM = 747.54 | |



REVISIONS	
NAME	DATE

ILLINOIS DEPARTMENT OF TRANSPORTATION
 ILLINOIS ROUTE 31 AND WING STREET
 F.A.U. 3887, SECTION 96-00159-00-CH
 KANE COUNTY

DRAINAGE AND UTILITIES
 ILLINOIS ROUTE 31

SCALE: VERT. 1"=5'
 HORIZ. 1"=50'
 DATE: FEBRUARY 13, 2008

DRAWN BY: TC
 CHECKED BY: KMA