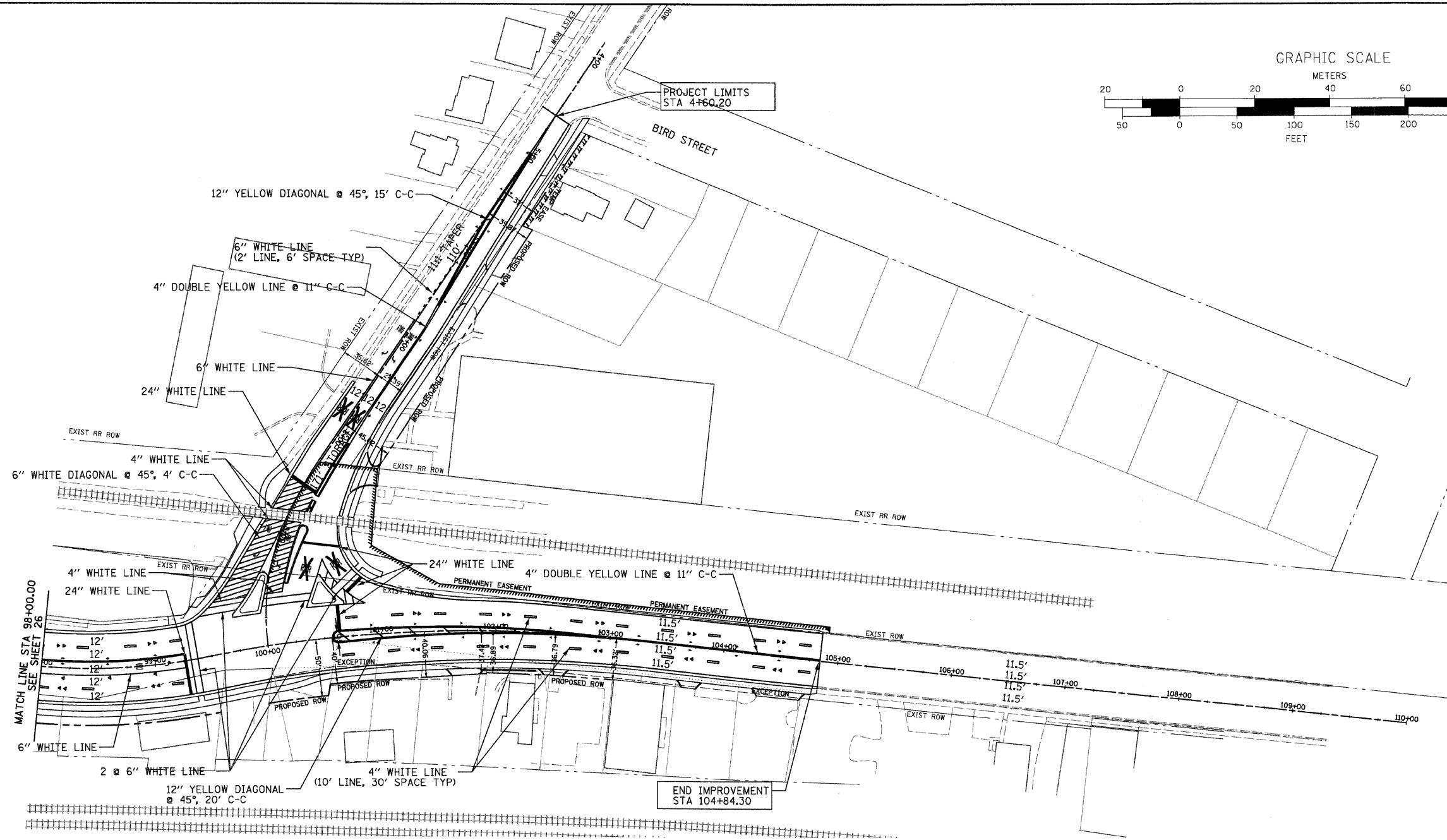
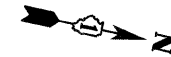
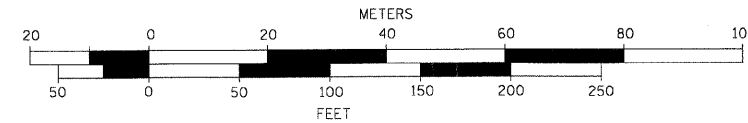


CONTRACT NO.: 83943

F.A.U. RTE.	SECTION	COUNTY	TOTAL SHEETS	SHEET NO.
3887	96-00159-00-CH	KANE	70	27
STA. 98+00.00		TO STA. 104+84.30		
FED. ROAD DIST. NO.		ILLINOIS	FED. AID PROJECT	

GRAPHIC SCALE



PAVEMENT MARKERS LEGEND

- ◀ ONE-WAY CRYSTAL MARKER
- ◀ ONE-WAY AMBER MARKER
- ◆ TWO-WAY AMBER MARKER

NOTES:

1. ALL PAVEMENT MARKINGS WILL BE THERMOPLASTIC.
2. FOR DETAILS OF RAISED PAVEMENT MARKERS SEE TYPICAL APPLICATIONS RAISED REFLECTIVE PAVEMENT MARKERS STANDARD.
3. LETTERS AND SYMBOLS WILL BE LARGE SIZE.

RHA&A
 Robert H. Anderson & Associates, Inc.
 Consulting Engineers
 Timbers Professional Center
 220 West River Drive, St. Charles, IL 60174
 Phone - 630.584.3530 Fax - 630.584.3047

REVISIONS	
NAME	DATE

ILLINOIS DEPARTMENT OF TRANSPORTATION
 ILLINOIS ROUTE 31 AND WING STREET

STRIPING PLAN
 STA 98+00.00 TO STA 104+84.30

SCALE: VERT.
 HORIZ. 1"=50'
 DATE: FEBRUARY 13, 2008

DRAWN BY: TC
 DESIGN BY: TC
 CHECKED BY: KMA