

CONTRACT NO.: 83943

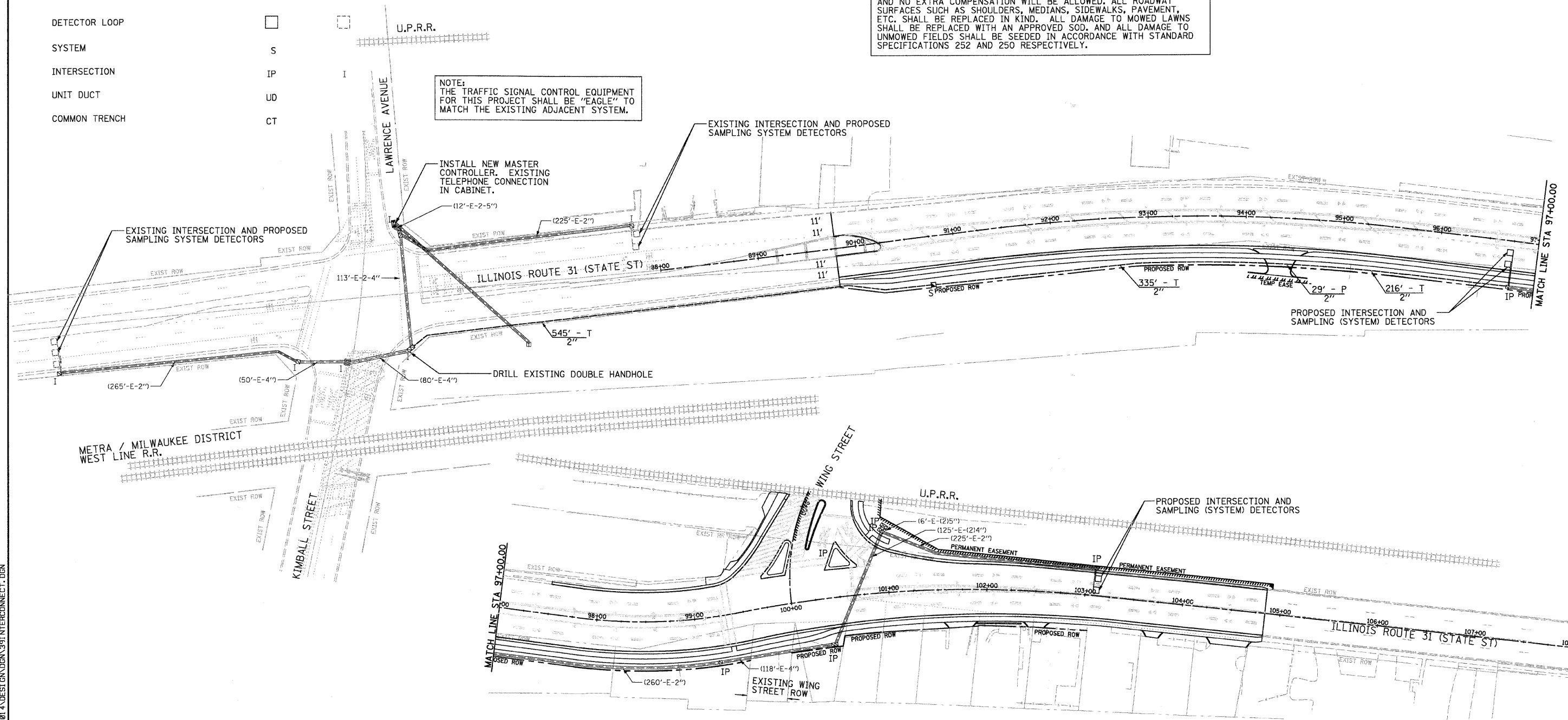
F.A.U. RTE.	SECTION	COUNTY	TOTAL SHEETS	SHEET NO.
3887	96-00159-00-CH	KANE	70	39
STA. 89+79.30		TO STA. 98+00.00		
FED. ROAD DIST. NO.	ILLINOIS	FED. AID PROJECT		

INTERCONNECT PLAN LEGEND

	PROPOSED	EXISTING
CONTROLLER		
HANDHOLE		
HEAVY DUTY HANDHOLE		
DOUBLE HANDHOLE		
G.S. CONDUIT IN TRENCH OR PUSHED		
DETECTOR LOOP		
SYSTEM	S	
INTERSECTION	IP	I
UNIT DUCT	UD	
COMMON TRENCH	CT	

RESTORATION OF WORK AREA. RESTORATION OF THE TRAFFIC SIGNAL WORK AREA WILL BE INCIDENTAL TO THE RELATED PAY ITEM SUCH AS FOUNDATION, CONDUIT, HANDHOLE, TRENCH AND BACKFILL, ETC., AND NO EXTRA COMPENSATION WILL BE ALLOWED. ALL ROADWAY SURFACES SUCH AS SHOULDERS, MEDIANS, SIDEWALKS, PAVEMENT, ETC. SHALL BE REPLACED IN KIND. ALL DAMAGE TO MOWED LAWNS SHALL BE REPLACED WITH AN APPROVED SOD. AND ALL DAMAGE TO UNMOWED FIELDS SHALL BE SEEDING IN ACCORDANCE WITH STANDARD SPECIFICATIONS 252 AND 250 RESPECTIVELY.

NOTE: THE TRAFFIC SIGNAL CONTROL EQUIPMENT FOR THIS PROJECT SHALL BE "EAGLE" TO MATCH THE EXISTING ADJACENT SYSTEM.



2/11/2008 H:\ELGIN\12981\DESIGN\0391\INTERCONNECT.DGN

RHA&A
 Robert H. Anderson & Associates, Inc.
 Consulting Engineers
 Timbers Professional Center
 220 West River Drive, St. Charles, IL 60174
 Phone - 630.584.3530 Fax - 630.584.3047

REVISIONS	
NAME	DATE

ILLINOIS DEPARTMENT OF TRANSPORTATION
 ILLINOIS ROUTE 31 AND WING STREET

ILL. RTE. 31
 KIMBALL ST. / LAWRENCE AVE TO WING ST.
 INTERCONNECT PLAN

SCALE: VERT.
 HORIZ. 1"=50'
 DATE: FEBRUARY 13, 2008

DRAWN BY: CMC
 DESIGN BY: CMC
 CHECKED BY: JS