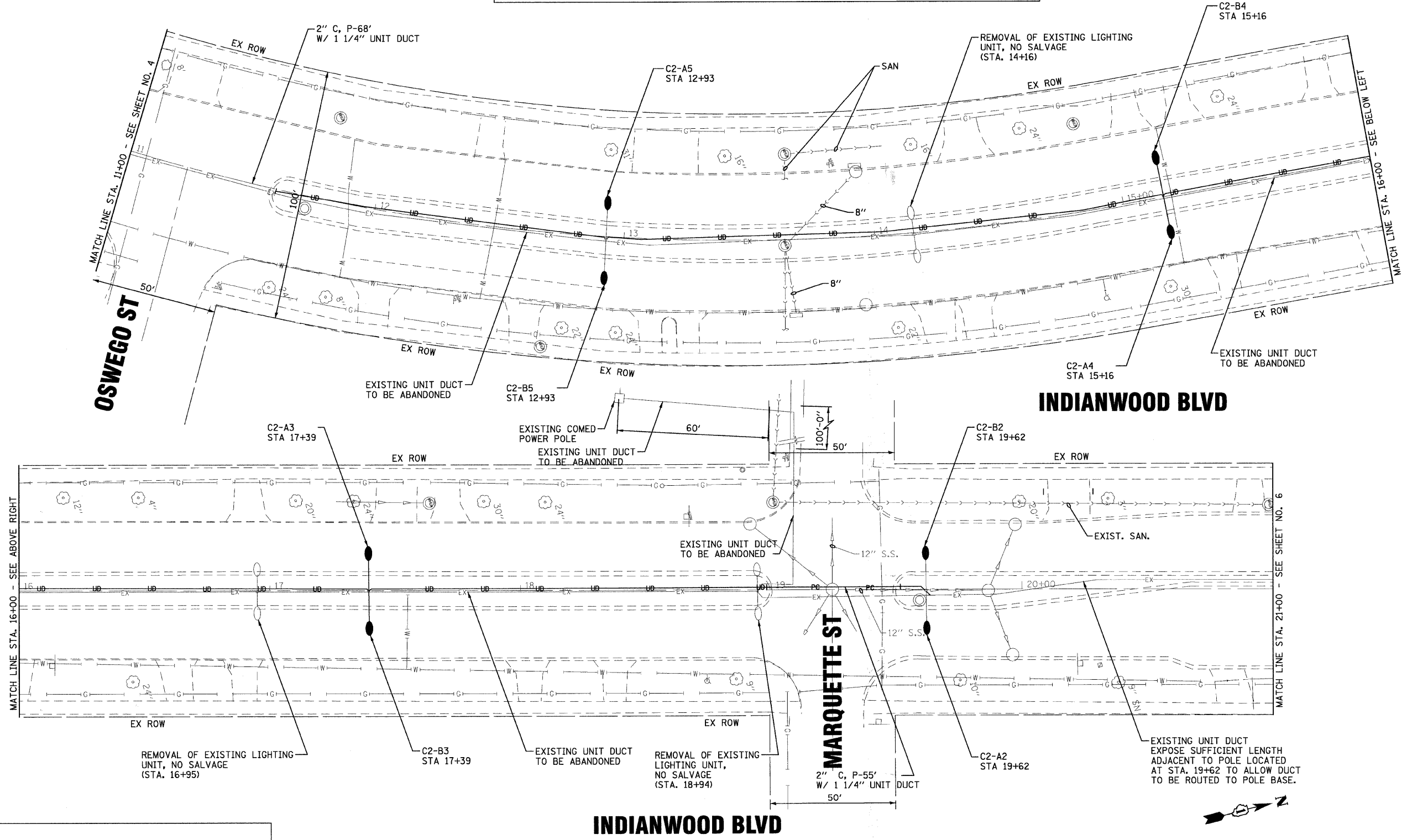


F.A. RTE.	SECTION	COUNTY	TOTAL SHEETS	SHEET NO.
•	••	COOK	10	5
STA.	TO STA.			
FED. ROAD DIST. NO	ILLINOIS	FED AID PROJECT	TCSP-06IL (010)	
• NA		CONTRACT NO. 83991		
•• 07-00091-00-LT				

LEGEND

- EXISTING COM ED POWER POLE
- UD — 1 1/4" UNIT DUCT 4*6 & 1*8 GROUND OR AS INDICATED
- PC — 2" CONDUIT, PUSHED 8' LONG WITH 1 1/4" UNIT DUCT
- U — 2" CONDUIT, TRENCHED 4' LONG WITH 3*2
- 2"C,T-4' W/3*2 PROPOSED STREET LIGHT 35' MOUNTING HEIGHT, 250 WATT HPS, 240 VOLTS, W/12' ARM
- EXISTING LIGHTING UNIT REMOVE & SALVAGE
- SB SET BACK FROM BACK OF CURB
- EX — EXISTING STREET LIGHTING UNIT DUCT TO BE ABANDONED



NOTE:
 ANY DAMAGE TO PAVEMENT, SIDEWALK, CURB, OR ANY OTHER PORTION OF THE ROADWAY NOT SPECIFICALLY TO BE REMOVED AND REPLACED SHALL BE REPAIRED OR REPLACED BY THE CONTRACTOR AT NO ADDITIONAL COST.

6/19/2008 10:53:35 AM I:\proj\fa\061389\0\dms from mokeno\061389_SLI.dwg
 © 2006 BY BAXTER & WOODMAN, INC.
 ALL RIGHTS RESERVED. 4/27/2001

CONSULTANTS	REV. NO.	DATE	DESCRIPTION

* REFER TO EQUIPMENT MANUFACTURER'S SHOP DRAWINGS

DRAWING FILE: ...061389_SLI.dwg

BAXTER & WOODMAN
 Consulting Engineers

Baxter & Woodman
 Crystal Lake, Illinois 815-459-1260
 Burlington, Wisconsin 262-765-7834
 Mokena, Illinois 708-478-3090
 DeKalb, Illinois 815-787-3111
 Grayslake, Illinois 847-223-5088
 Rockford, Illinois 815-488-1551
 Plainfield, Illinois 815-609-7425

VILLAGE OF PARK FOREST, ILLINOIS
INDIANWOOD BLVD
BLACKHAWK DR TO ORCHARD DR

STREET LIGHTING PLAN
STA. 11+00 TO STA. 21+00

DESIGNED BY	JLR	SCALE	1" = 20'
DRAWN BY	BCD	PROJECT NO.	061389
CHECKED BY	TMS	SHEET NO.	5 OF 10
DATE	06-13-08		