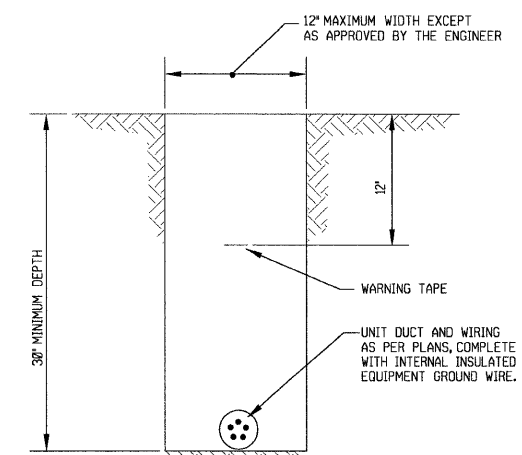
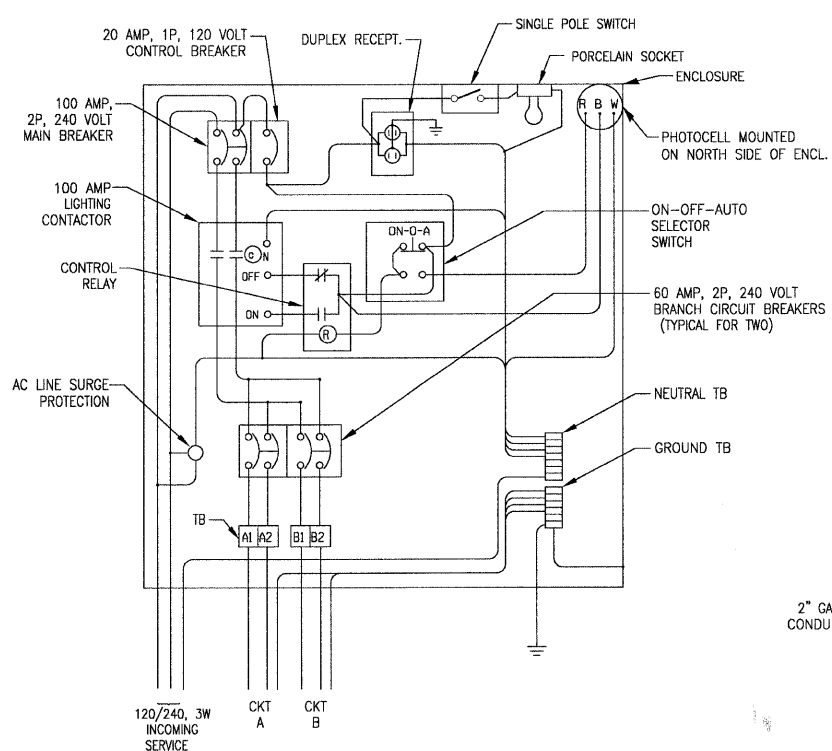


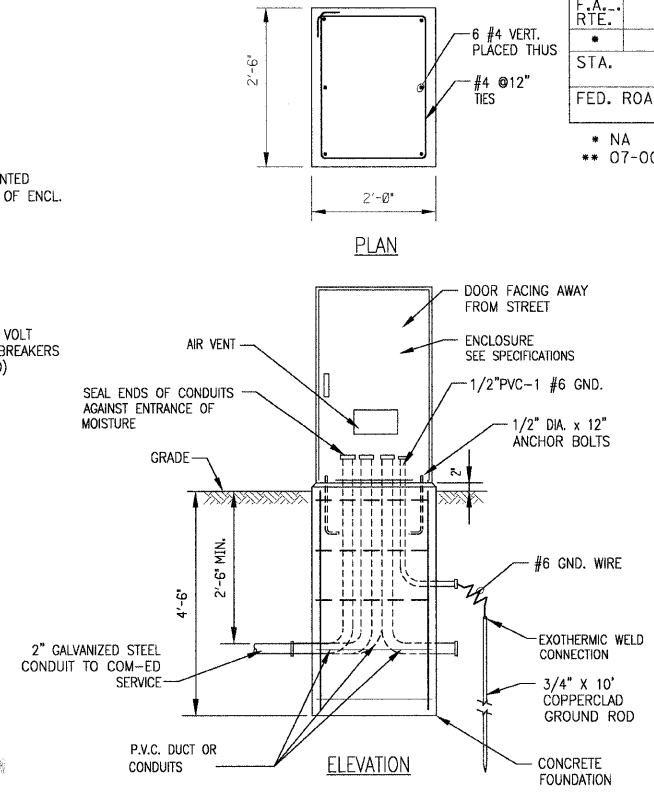
**SPLICING ELECTRICAL CABLES**  
BASIC MATERIALS AND METHODS  
NO SCALE



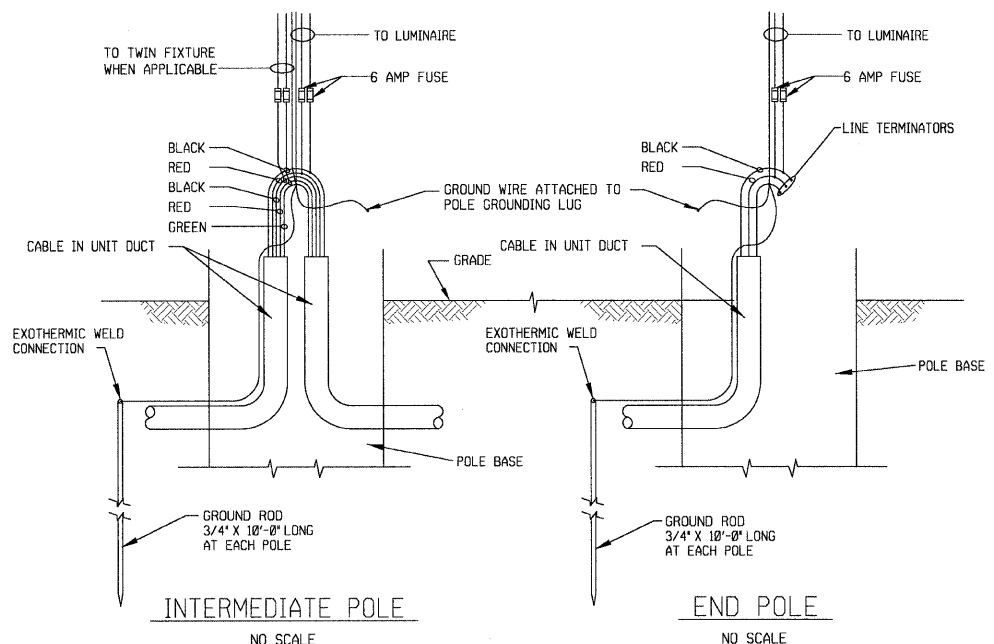
**TYPICAL WIRING IN TRENCH DETAIL**  
NO SCALE



**LIGHTING CONTROLLER C1 & C2 WIRING DIAGRAM**  
NO SCALE

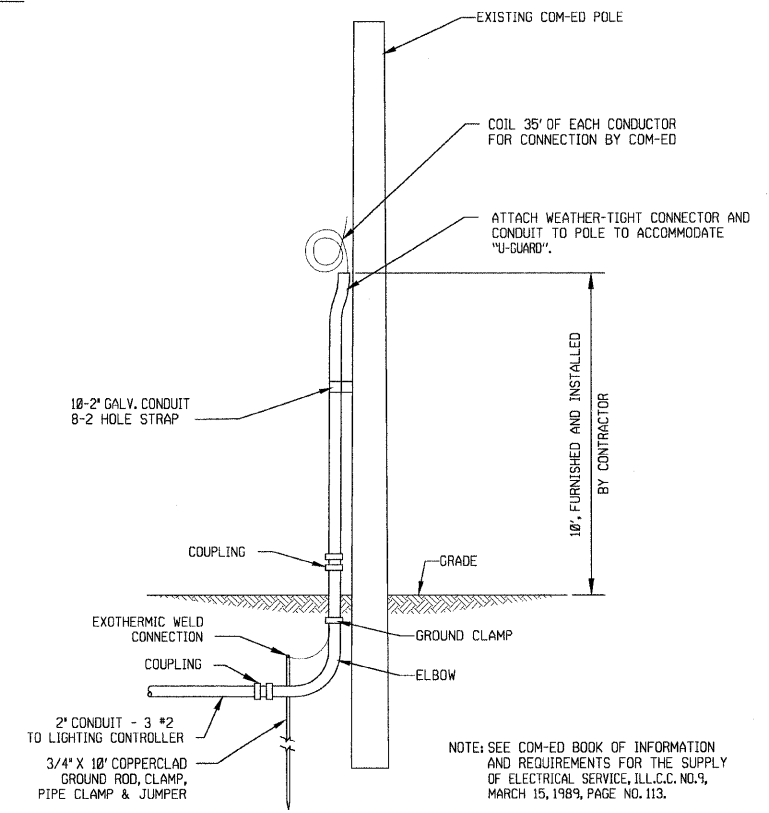


**LIGHTING CONTROLLER AND FOUNDATION DETAIL**  
NO SCALE

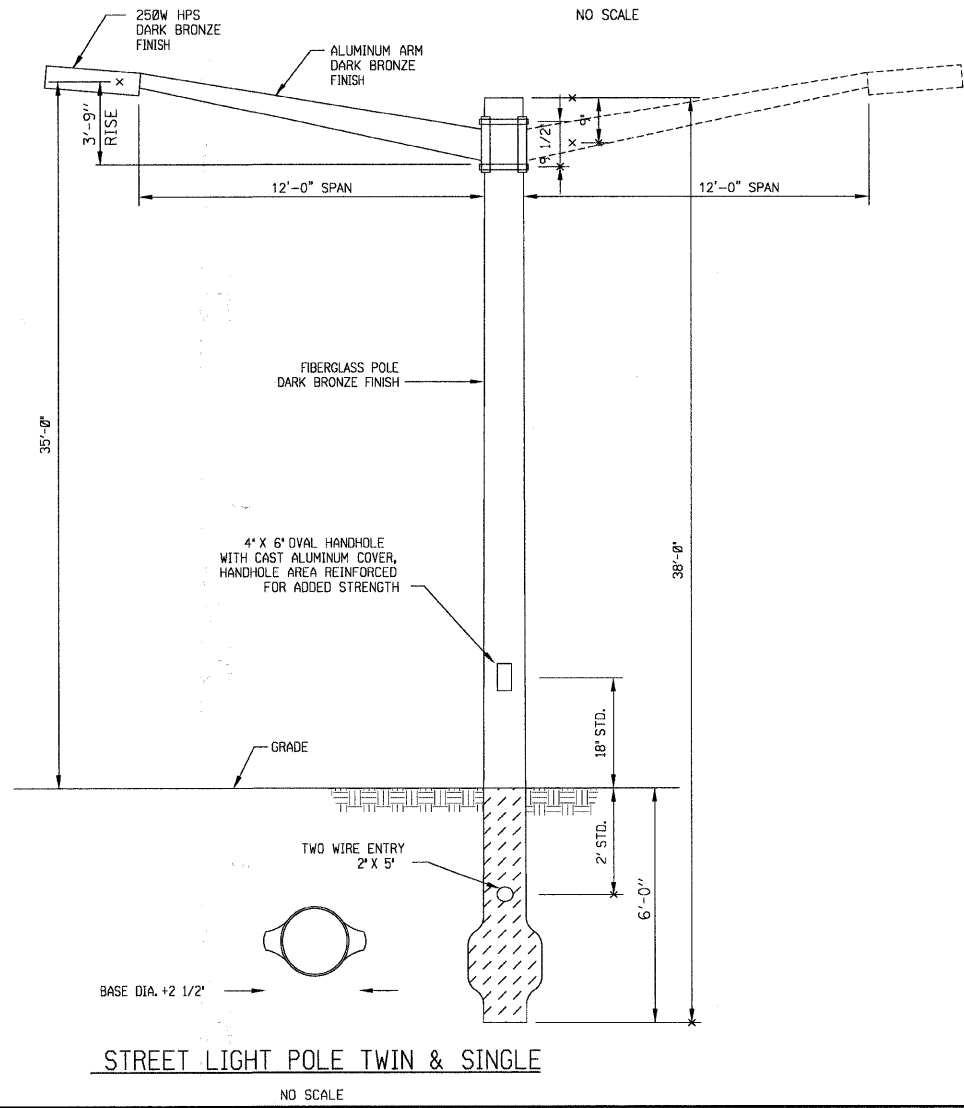


**INTERMEDIATE POLE**  
NO SCALE

**END POLE**  
NO SCALE



**COM-ED OVERHEAD CONNECTION POLE**  
NO SCALE



**STREET LIGHT POLE TWIN & SINGLE**  
NO SCALE

NOTE:  
INSTALL LIGHT POLE IN ACCORDANCE WITH MANUFACTURER'S RECOMMENDATIONS. PROVIDE 6 INCHES OF COARSE GRAVEL IN BOTTOM OF AUGERED HOLE FOR DRAINAGE AND SUPPORT, AUGER HOLE LARGE ENOUGH TO ACCOMMODATE THE BUTT OF THE POLE, BACKFILL HOLE AROUND POLE WITH CRUSHED LIME STONE SCREENINGS COMPACTED BY MACHINE OR HAND TAMPING IN 6-INCH LAYERS, ADD 1/2 BAG OF DRY CEMENT TO TAMPING MIXTURE AROUND POLE IF SOIL CONDITIONS REQUIRE, PLUMB AND ALIGN POLE IN A VERTICAL POSITION ONCE POLE IS SELF-SUPPORTING.

NOTE: SEE COM-ED BOOK OF INFORMATION AND REQUIREMENTS FOR THE SUPPLY OF ELECTRICAL SERVICE, ILL.C.C. NO.9, MARCH 15, 1989, PAGE NO. 113.

6/19/2008 10:49:38 AM I:\proj\11\061389\40\gdne from makeno\061389-DETAILS.dwg  
 2008, BY: BAXTER & WOODMAN, INC.  
 07-00091-00-LT  
 4/20/2007

CONSULTANTS	REV. NO.	DATE	DESCRIPTION

\* REFER TO EQUIPMENT MANUFACTURER'S SHOP DRAWINGS

DRAWING FILE: ...061389-DETAILS.dwg

**BAXTER & WOODMAN**  
Consulting Engineers

**Baxter & Woodman**  
Crystal Lake, Illinois 815.459.1260  
Burlington, Wisconsin 862.763.7834  
Mukwonago, Illinois 708.478.9090  
DeKalb, Illinois 815.787.3111  
Groveside, Illinois 847.223.5088  
Rockford, Illinois 815.489.1551  
Plainfield, Illinois 815.609.7425

**VILLAGE OF PARK FOREST, ILLINOIS**  
INDIANWOOD BLVD  
BLACKHAWK DR TO ORCHARD DR

**STREET LIGHTING DETAILS**

DESIGNED BY JLR  
DRAWN BY BCD  
CHECKED BY TMS  
DATE 06-13-08

SCALE 1" = 20'  
PROJECT NO. 061389  
SHEET NO. 8 OF 10