

F.A. RTE.	SECTION	COUNTY	TOTAL SHEETS	SHEET NO.
FAP734	98-00480-00-BR 03-00522-00-TL	WINNEBAGO	62	12
STA.	TO STA.			
FED. ROAD DIST. NO.	ILLINOIS	FED. AID PROJECT		

SCHEDULES

SANITARY (9" DIAMETER DROP) MANHOLE, 5' DIAMETER		
STATION	EACH	REMARKS
4+69.98 (MH #4)	1	SAN. SEWER - LEWIS ST
PROJECT TOTAL	1	

BREAKER-RUN CRUSHED STONE		
STATION	TONS	REMARKS
CONTINGENCY ITEM	1,538	ROAD - AS REQUIRED BY ENGINEER
CONTINGENCY ITEM	410	CULVERT - AS REQUIRED BY ENGINEER
PROJECT TOTAL	1,948	

SANITARY (12" DIAMETER DROP) MANHOLE, 6' DIAMETER, SPECIAL		
STATION	EACH	REMARKS
PARK AREA EAST OF KISHWAUKEE 383' R 420+50 (MH #6)	1	BUILD OVER EXIST. PIPE - SEE SHT. #21
PROJECT TOTAL	1	

SANITARY (10" DIAMETER DROP) MANHOLE, 5' DIAMETER		
STATION	EACH	REMARKS
7.30' R 424+25.14 (MH #2)	1	SAN. SEWER - KISHWAUKEE ST
PROJECT TOTAL	1	

CONCRETE STEPS		
STATION	CU YD	REMARKS
L 418+11.42	0.53	2 STEPS - 5' W
L 425+56	1.15	6 STEPS - 4' W
L 426+10	1.15	6 STEPS - 4' W
L 426+50	1.15	6 STEPS - 4' W
PROJECT TOTAL	3.98	

INLETS, TYPE 700 (DRIVEWAY)		
STATION	EACH	REMARKS
L 419+90	1	
PROJECT TOTAL	1	

SANITARY (12" DIAMETER DROP) MANHOLE, 6' DIAMETER		
STATION	EACH	REMARKS
7' R 419+18.08 (MH #1)	1	SAN. SEWER - KISHWAUKEE ST
PROJECT TOTAL	1	

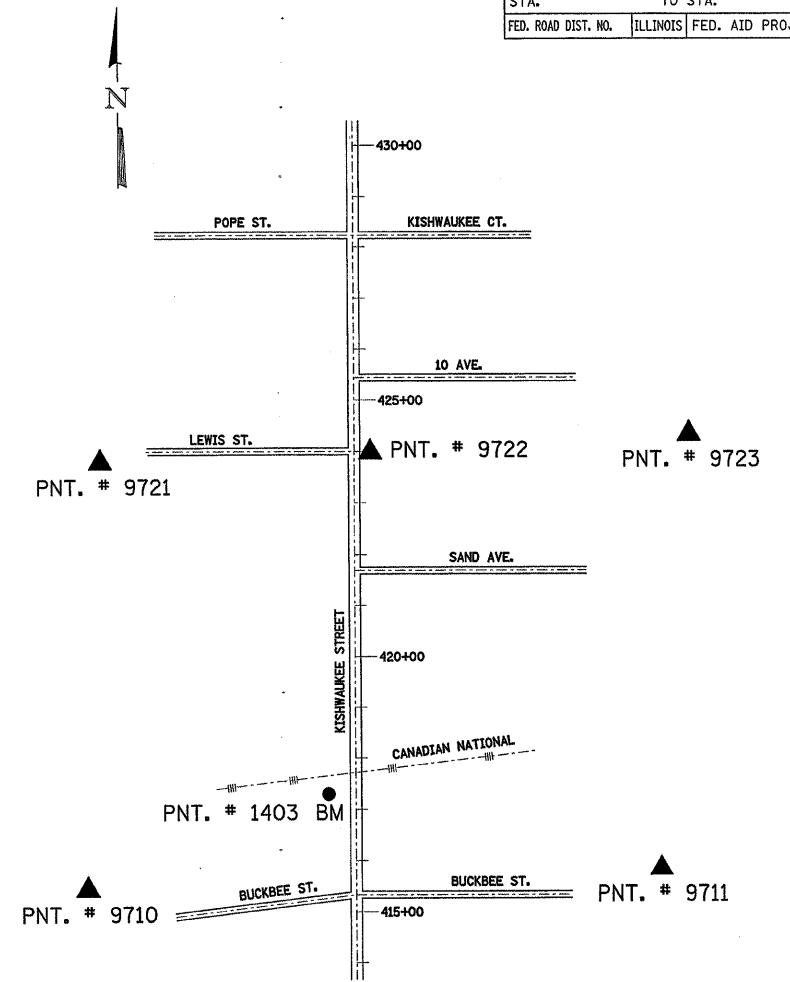
SANITARY SEWER 12"		
STATION	FOOT	REMARKS
415+67.32 TO 419+18.08	350	
PROJECT TOTAL	350	

GRANULAR CRADLE AND INITIAL BACKFILL		
STATION	CU YD	REMARKS
SANITARY SEWER		
425+04	12 (NP)	4" DIA. SAN. SERVICE - KISHWAUKEE ST
425+76	11 (NP)	4" DIA. SAN. SERVICE - KISHWAUKEE ST
426+00	11 (NP)	4" DIA. SAN. SERVICE - KISHWAUKEE ST
426+43	11 (NP)	4" DIA. SAN. SERVICE - KISHWAUKEE ST
427+24	11 (NP)	4" DIA. SAN. SERVICE - KISHWAUKEE ST
427+36	7 (NP)	4" DIA. SAN. SERVICE - KISHWAUKEE ST
427+88	6 (NP)	4" DIA. SAN. SERVICE - KISHWAUKEE ST
416+50	14 (NP)	4" DIA. SAN. SERVICE - KISHWAUKEE ST
416+61	12 (NP)	6" DIA. SAN. SERVICE - KISHWAUKEE ST
417+32	12 (NP)	6" DIA. SAN. SERVICE - KISHWAUKEE ST
L 417+56	20 (NP)	6" DIA. SAN. SERVICE - KISHWAUKEE ST
415+67.32 TO 417+62	64 (NP)	12" DIA. SANITARY - KISHWAUKEE STREET
418+22 TO 419+18.08	35 (NP)	12" DIA. SANITARY - KISHWAUKEE STREET
396' R 420+35 TO 383' R 420+50	8 (P)	21" DIA. SAN. SEWER - PARK AREA
3+17.28 TO 4+69.98	87 (P)	24" DIA. SAN. SEWER - LEWIS ST
4+69.98 TO 7+34.18	151 (P)	24" DIA. SAN. SEWER - LEWIS ST
7+34.18 TO 10+07.30	156 (P)	24" DIA. SAN. SEWER - LEWIS ST
10+07.30 TO 12+54.16	141 (P)	24" DIA. SAN. SEWER - LEWIS ST
WATER MAIN		
14' L 415+76 TO 13' L 417+34	54 (NP)	12" WATER MAIN
14' L 418+34 TO 16' L 421+00	90 (NP)	12" WATER MAIN
13' L 417+29	7 (NP)	12" WATER MAIN
16' L 421+00 TO 15' L 421+96	33 (NP)	12" WATER MAIN
15' L 421+96 TO 15' L 423+96	68 (P)	12" WATER MAIN
15' L 423+96 TO 9' L 423+96	2 (NP)	12" WATER MAIN
9' L 423+96 TO 8' L 427+00	103 (NP)	12" WATER MAIN
16' L 421+65	6 (NP)	12" WATER MAIN
9' L 424+92	8 (NP)	12" WATER MAIN
8' L 427+00 TO 8' L 428+45	49 (NP)	12" WATER MAIN
8' L 428+45 TO 10' L 428+45	1 (NP)	12" WATER MAIN
10' L 428+45 TO 10' L 428+50	2 (NP)	12" WATER MAIN
COPPER WATER SERVICES (ALL)	88 (NP)	
PARTICIPATING	611	(P)
NON-PARTICIPATING	669	(NP)
PROJECT TOTAL	1,280	

UTILITIES		
TYPE	NAME AND ADDRESS OF UTILITY	TELEPHONE
STORM SEWER	CITY OF ROCKFORD 425 EAST STATE STREET ROCKFORD, IL. 61104 CONTACT: LARRY LAURSEN	(815) 987-5570
ELECTRIC	COMED 123 ENERGY AVENUE ROCKFORD, IL. 61109 CONTACT: DAVE SCHACHT	(630) 437-2129
GAS	NICOR GAS 300 WEST TERRA COTTA AVENUE CRYSTAL LAKE, IL. 60014 CONTACT: SCOTT PUFFER	(815) 455-0271 EXT. 250
CABLE	INSIGHT COMMUNICATIONS 811 21ST. STREET ROCKFORD, IL. 61108 CONTACT: LORI BYRNE	(815) 962-4400 EXT. 2012
TELEPHONE	SBC 2404 8TH AVENUE ROCKFORD, IL. 61108 CONTACT: STEVE JONES CONTACT: FRANK ROSE	(815) 394-7270 (815) 394-7276
WATER	CITY OF ROCKFORD WATER DIVISION 1111 CEDAR STREET ROCKFORD, IL. 61102	(815) 987-5725
RAILROAD	CN RAILROAD 17641 SOUTH ASHLAND AVENUE HOMERODD, IL. 60430-1345 CONTACT: JOHN HENDKRICKSON	(708) 332-3557
TELEPHONE	A. T. & T (FIBER OPTICS IN ROW) REQUIRES LOCATE TECHNICIAN ON SITE (NO CHARGE) 866 ROCK CREEK ROAD PLANO, IL. 60545 CONTACT: BRIAN CRULL CONTACT: CARL DONAHUE	(815) 566-1976 CELL (630) 552-4677
TELEPHONE	VERIZON 112 WEST ELM STREET SYCAMORE, IL. 60178 CONTACT: GARY KLUZ	(815) 895-1515
SAN. SEWER	ROCK RIVER WATER RECLAMATION DISTRICT 3333 KISHWAUKEE STREET ROCKFORD, IL. 61126-7480 CONTACT: DAVID COOK	(815) 387-7663

SANITARY SEWER 21"		
STATION	FOOT	REMARKS
PARK AREA EAST OF KISHWAUKEE 396' R 420+35 TO 383' R 420+50	16	
PROJECT TOTAL	16	

SANITARY SEWER 24"		
STATION	FOOT	REMARKS
3+17.28 TO 4+69.98	153	SAN. SEWER - LEWIS ST
4+69.98 TO 7+34.18	264	SAN. SEWER - LEWIS ST
7+34.18 TO 10+07.30	273	SAN. SEWER - LEWIS ST
10+07.30 TO 12+54.16	247	SAN. SEWER - LEWIS ST
PROJECT TOTAL	937	



CONTROL POINT AND BENCH MARK LOCATIONS

CONTROL POINTS:			
POINT:	NORTHING:	EASTING:	STATION
#9710	#2036606.33	#2588274.82	LT. 663.58' STA. 415+46.05
#9711	#2036654.42	#2589534.40	RT. 596.30' STA. 415+85.44
#9721	#2037443.89	#2588437.70	LT. 496.08' STA. 423+81.32
#9722	#2037464.25	#2588965.19	RT. 31.50' STA. 423+99.25
#9723	#2037502.81	#2589587.02	RT. 653.50' STA. 424+34.96

BENCH MARK: DISC ON RETAINING WALL (POINT #1403 VERTICAL CONTROL STATION)
LT. 53.05' STA. 417+29.50 ELEV. 732.91

I Hereby state that this project is based on WINGIS control coordinates

John Huseman
John Huseman PLS