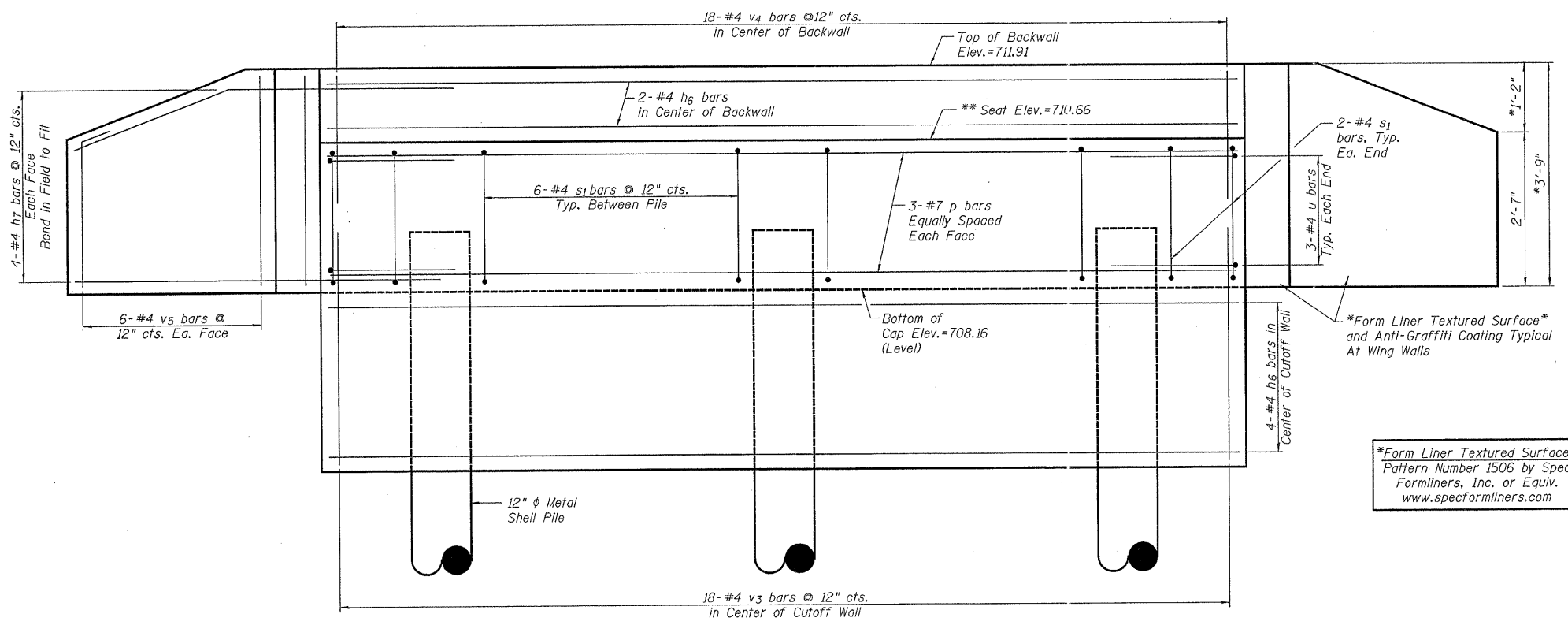
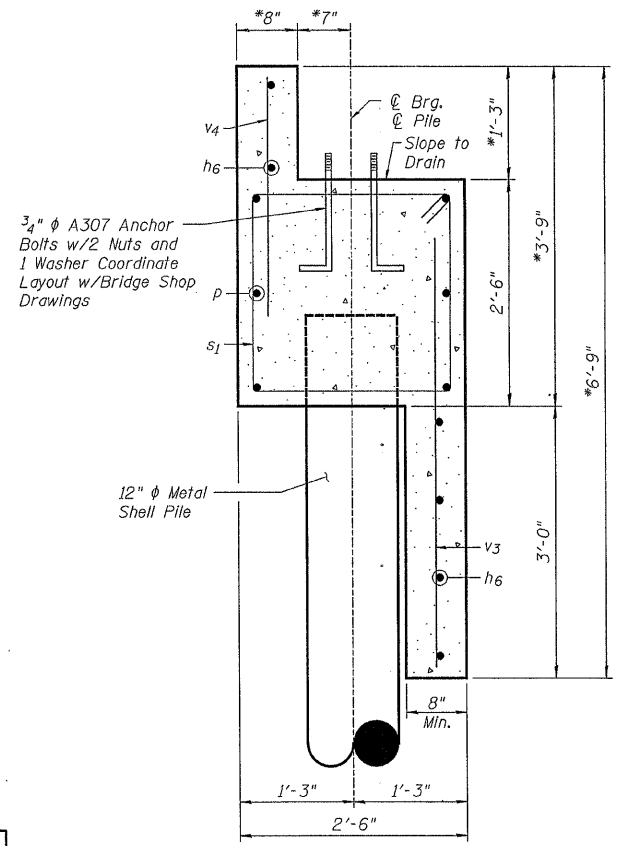


F.A. RTE.	SECTION	COUNTY	TOTAL SHEETS	SHEET NO.
FAP134	98-00480-00-BR 03-00522-00-TL	WINNEBAGO	62	36
STA.		TO STA.		
FED. ROAD DIST. NO.		ILLINOIS FED. AID PROJECT		

** Seat Elevation may require Adjustment After Approval of Final Shop Drawings.



ELEVATION



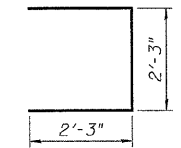
SECTION THRU ABUTMENT

*Verify Dimensions Based on Final Bridge Shop Drawings

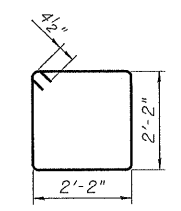
Form Liner Textured Surface
Pattern Number 1506 by Spec Formliners, Inc. or Equiv.
www.specformliners.com

BILL OF MATERIAL-N. & S. ABUT'S.

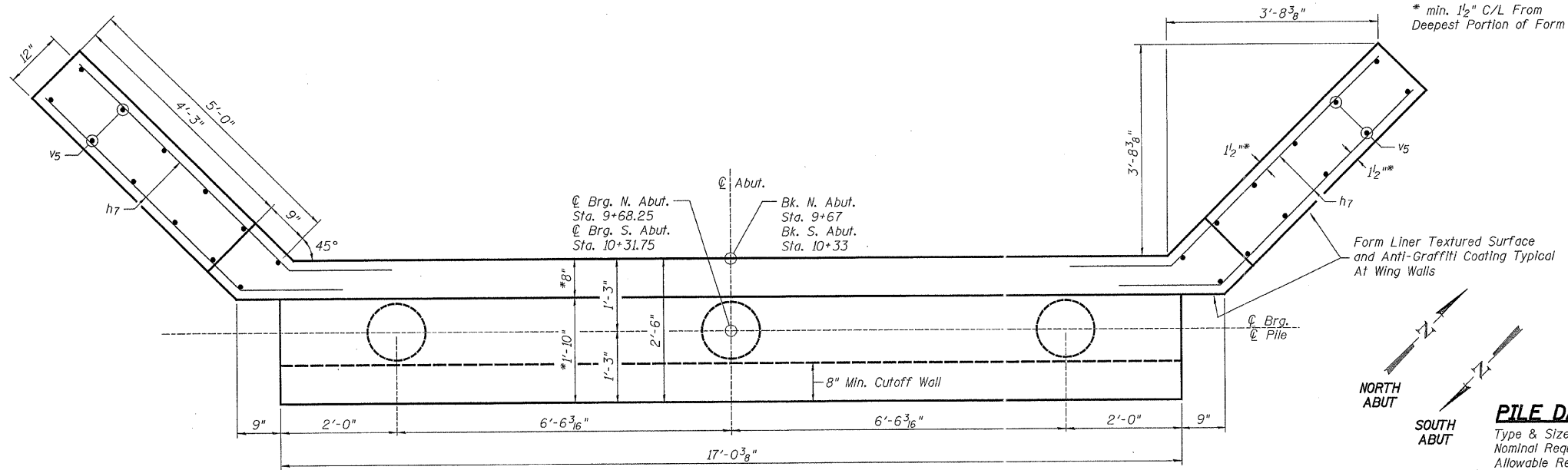
Bar	No.	Size	Length	Shape
h6	12	#4	15'-3"	—
h7	32	#4	8'-0"	—
p	12	#7	15'-3"	—
s1	32	#4	9'-5"	□
u	12	#4	6'-9"	—
v3	36	#4	4'-6"	—
v4	36	#4	2'-9"	—
v5	48	#4	3'-6"	—
Concrete Structures			Cu. Yd.	13.7
Reinforcement Bars			Pound	1130
Structure Excavation			Cu. Yd.	52
Furnishing Metal Shell Piles 12" X 0.179"			Foot	145
Driving Piles			Foot	145
Test Pile Metal Shells			Each	1
Porous Granular Embankment			Cu. Yd.	10
Form Liner Textured Surface			Sq. Yd.	8
Anti-Graffiti Coating			Sq. Ft.	76



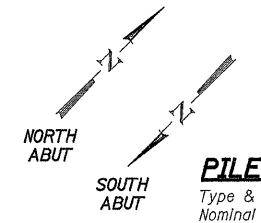
BAR u



BAR s1



ABUTMENT PLAN



PILE DATA

Type & Size: Metal Shell - 12 Inch Dia. X 0.179 Inch Walls
Nominal Required Bearing: 102 Kips
Allowable Resistance Available: 34 Kips
Estimated Length: 29'

NOTES:

All Exposed Edges shall have Standard 3/4" Chamfers, Except as Noted.
Seat Elevations, Abutment Cap Dimensions, and Backwall Dimensions shall be Verified by Engineer after Bridge Shop Drawings are Approved and Prior to Ordering Reinforcement Bars.

Plywood Placed Against Pile to Form Cutoff Wall may Remain in Place After Cutoff Wall is Poured. Any Cribbing, Bracing, or Shoring Required Behind Cutoff Wall shall be Removed Prior to Pouring Abutment Cap.

**NORTH AND SOUTH ABUTMENT DETAILS
KISHWAUKEE STREET PEDESTRIAN
BRIDGE OVER KEITH CREEK
ROCKFORD, ILLINOIS
WHA # 1158D03**