

FAS ROUTE NO.	SEC	COUNTY	TOTAL SHEETS	SHEET NO.
-	*	DEKALB	30	3

ILLINOIS PROJECT BROS-0037(045)
* 01-09114-01-BR

NOTES

ALL STUMP, TREE REMOVAL (< 6IN DIA.), CULVERTS AND BRUSH REMOVAL ARE CONSIDERED INCIDENTAL TO EARTH EXCAVATION.

ALL FENCES DISTURBED BY CONSTRUCTION ACTIVITIES SHALL BE RELOCATED AND RESTORED BY THE CONTRACTOR AS DIRECTED BY THE ENGINEER. (SEE SPECIAL PROVISIONS - COST CONSIDERED INCIDENTAL TO THE CONTRACT)

REQUIRED PAVEMENT SAWCUTS SHALL BE CONSIDERED INCIDENTAL TO EARTH EXCAVATION.

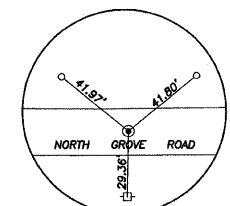
EXISTING STRUCTURE: SN 019-4402
SUPERSTR - RC DECK ON STEEL I BEAMS WITH STEEL RAILING 24' WIDE X ±130' BK-BK ABUTS.
SUBSTR - RC ABUTS WITH CONCRETE WING WALLS ON TIMBER PILE SOLID RC PIERS ON TIMBER PILE. EXISTING PLANS MAY BE VIEWED AT THE DEKALB COUNTY HIGHWAY DEPARTMENT

PROPOSED STRUCTURE: SN 019-4409
RC DECK ON STEEL I BEAMS WITH CLOSED PILE BENT STEEL SHEETING ABUTMENTS AND WINGWALLS AND PILE BENT PIERS WITH SOLID RC ENCASEMENT.
30' WIDE X ±135'-6" BK-BK

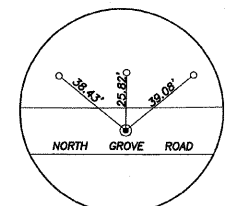
PI Sta = 11+84.40
N = 9991.84
E = 11043.85
I = 10°01'30"L

CIRCULAR
Da = 03'21"16"
Dc = 03'21"18"
T = 149.81
R = 1708.00
L = 298.85
C = 298.47
E = 6.56
M = 6.53

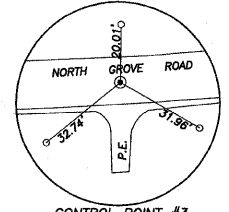
SECTION 01-09114-00-BR BEGINS AT STA. 14+55



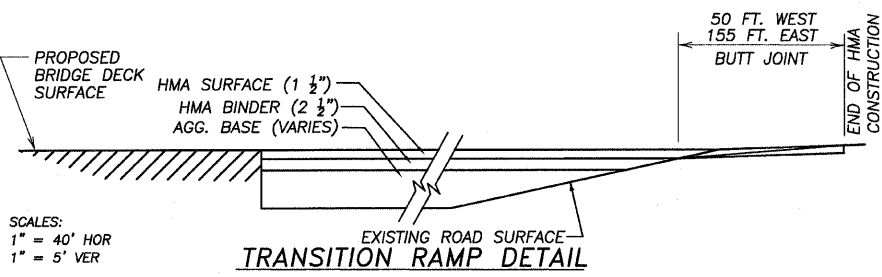
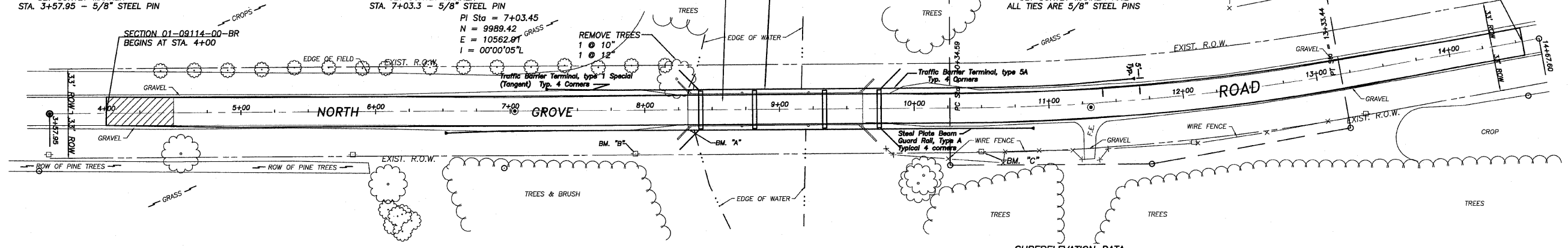
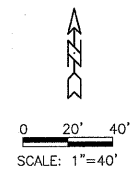
CONTROL POINT #1
SET SURVEY MARKER
STA. 3+57.95 - 5/8" STEEL PIN



CONTROL POINT #2
SET SURVEY MARKER
STA. 7+03.3 - 5/8" STEEL PIN



CONTROL POINT #3
SET SURVEY MARKER NAIL
ALL TIES ARE 5/8" STEEL PINS



BENCHMARK INFORMATION

B.M. "A" - SET CHISELED "□" W/ MASONRY NAIL IN CENTER @ SW WINGWALL. ELEV=822.04

B.M. "B" - SET COTTON SPINDLE IN FIRST P.P. WEST OF BRIDGE, ON SOUTH SIDE OF ROAD. ELEV=817.85

B.M. "C" - SET COTTON SPINDLE IN FIRST P.P. EAST OF BRIDGE ON SOUTH SIDE OF ROAD. ELEV=817.38

SUPERELEVATION DATA

MAX SUPER = 6%

IN	OUT
TR = 300.00	TR = 122
X = 33.00	X = 33.00
Y = 225.50	Y = 66.00
SR = 310.00	SR = 132.00
BS = 7+34.59	MS = 12+90.44
PX = 7+67.59	PY = 13+89.44
PY = 9+60.07	PX = 14+22.44
MS = 10+77.59	EX = 14+55.44

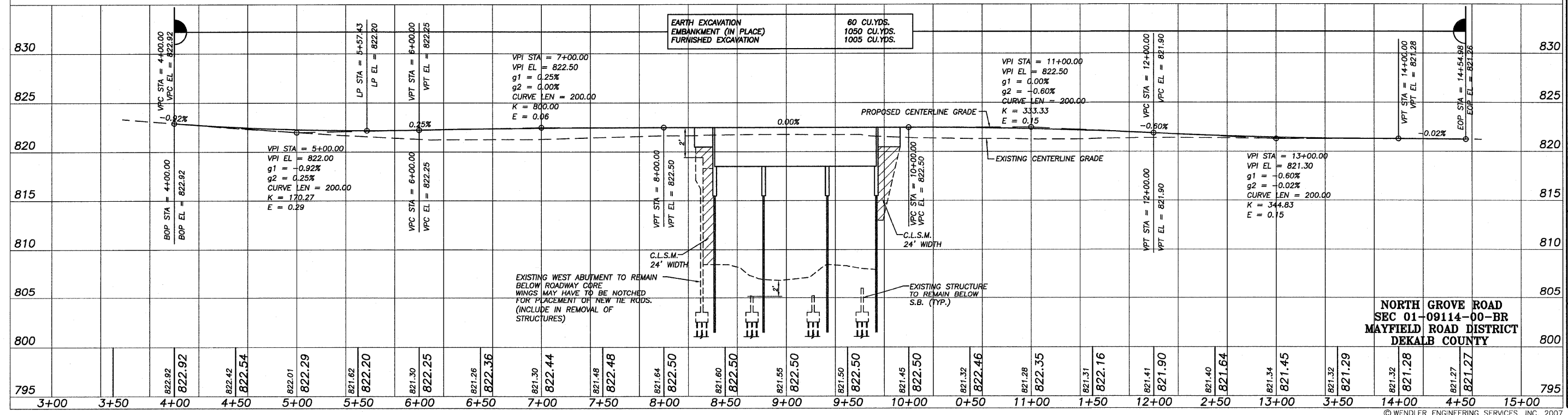
DESCRIPTION
TR = DISTANCE FROM BS TO TS
X = DISTANCE FROM BS TO PX
Y = DISTANCE FROM BS TO PY
SR = DISTANCE FROM PX TO BMS
BS = BEGIN SUPER ELEVATION
PX = CROWN REMOVED
PY = REVERSE CROWN
MS = MAX. SUPER ELEVATION

UTILITIES

ELECTRIC: COMMONWEALTH EDISON COMPANY TELEPHONE: VERIZON NORTH (815) 756-9541 (815) 564-6171
DEKALB, ILLINOIS BELVEDERE, ILLINOIS

GAS: NICOR (630) 983-8676
NAPERVILLE, ILLINOIS

THE LOCATIONS OF UTILITY FACILITIES AS SHOWN ON THESE PLANS ARE AN ESTIMATE AND NOT INTENDED AS FIELD LOCATIONS FOR CONSTRUCTION. THE CONTRACTOR IS RESPONSIBLE FOR CONTACTING ALL UTILITIES PRIOR TO CONSTRUCTION AND CALLING J.U.L.I.E. AT 800-892-0123 FOR CONFIRMATION OF ALL EXISTING UTILITY LOCATIONS.



608 TIMBER CREEK ROAD - P.O. BOX 466 - DIXON, IL 61021 - 815-289-2261
28 E. MARION - SUITE 3 - PRINCETON, IL 61356 - 815-699-4731
1778 WEST STATE ST. - SYCAMORE, IL 60178 - 815-885-5008
804 FREEMONT RD. - STERLING, IL 61081 - (815) 626-4428
E-MAIL: info@wendlerengineering.com

WENDLER ENGINEERING SERVICES, INC.
Structural & Civil Engineers-Land Surveying-Environmental Services
Illinois Professional Design Firm No. 184-000848

1968 - 2007
YEARS
WE'RE STILL
"Turning Ideas...
...Into Reality!"

39