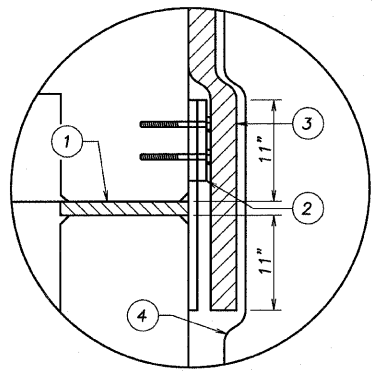
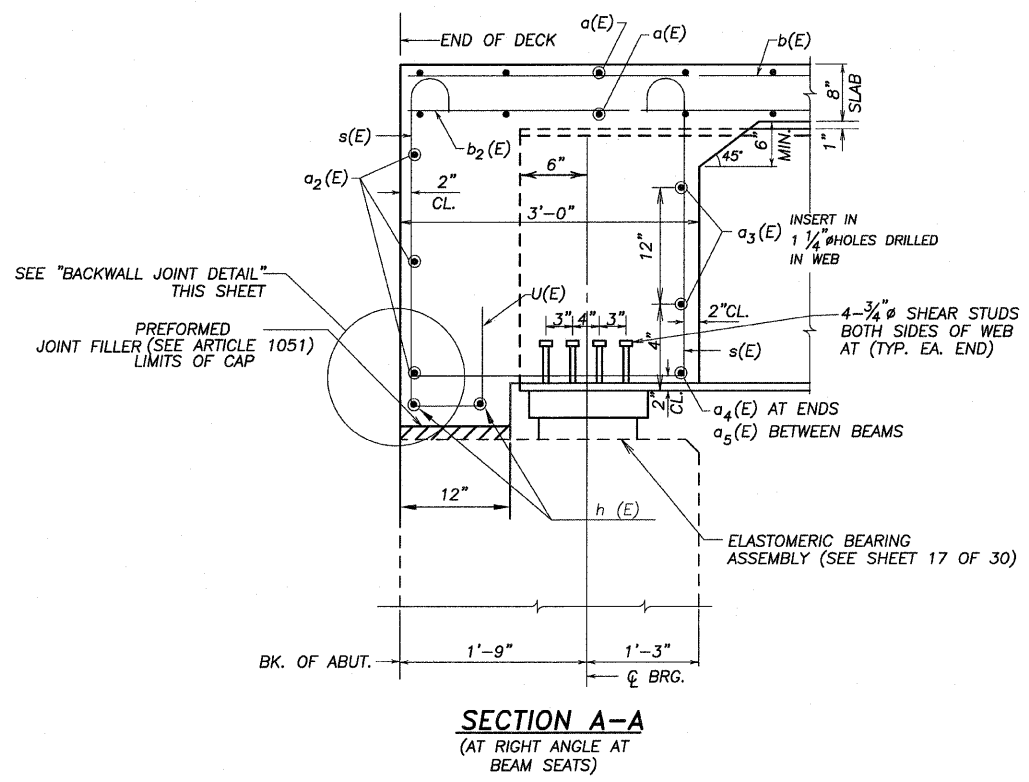


BILL OF MATERIAL - SUPERSTRUCTURE

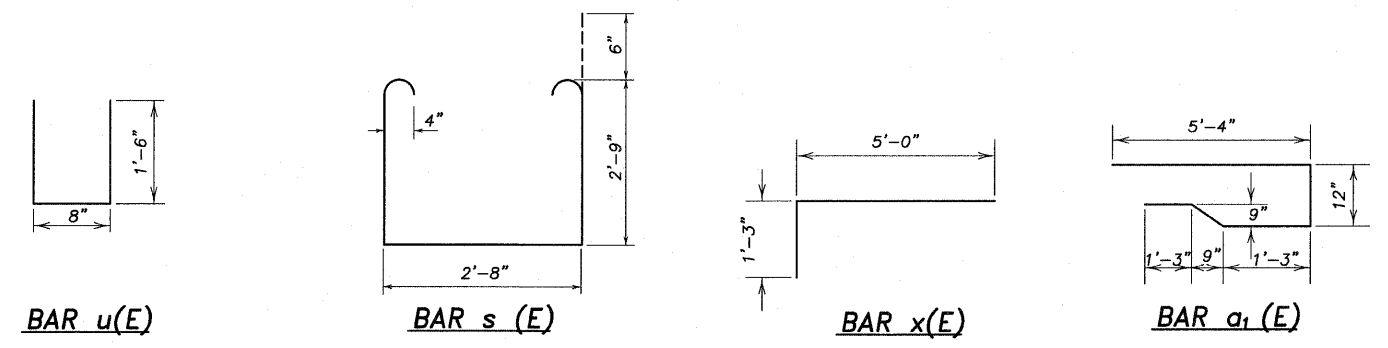
BAR	NO.	SIZE	LENGTH	SHAPE
a(E)	355	#5	29'-8"	—
a ₁ (E)	192	#6	9'-7"	⌌
a ₂ (E)	6	#6	29'-8"	—
a ₃ (E)	4	#6	29'-8"	—
a ₄ (E)	4	#6	2'-2"	—
a ₅ (E)	8	#6	5'-9"	—
b(E)	124	#5	35'-6"	—
b ₁ (E)	62	#6	26'-0"	—
b ₂ (E)	160	#5	28'-10"	—
h(E)	4	#4	29'-8"	—
s(E)	68	#4	9'-2"	⌌
u(E)	30	#4	3'-8"	⌌
x(E)	60	#6	6'-3"	⌌
CONCRETE SUPERSTRUCTURE			CU. YD.	130.8
REINFORCEMENT BARS EPOXY COATED			LBS.	27230
PROTECTIVE COAT **			SQ. YD.	503
BRIDGE DECK GROOVING			SQ. YD.	452



- ① - 2" PREFORMED JOINT FILLER (ARTICLE 1051) BONDED TO ABUTMENT CAP WITH APPROVED ADHESIVE (FULL WIDTH OF CAP)
 - ② - 1/8" THICK REINFORCED ELASTOMERIC NEOPRENE MAT
1/2" STUDS WITH NUTS & WASHERS AT 12 INCH CENTERS (MINIMUM EMBEDMENT=4")
HOT ROLLED BARS: 3/8" x 5" x 30'-6"
 - ③ - 2" PREFORMED JOINT FILLER (ARTICLE 1051) BONDED TO SUPERSTRUCTURE (FULL WIDTH OF CAP; 3'-0" WIDE)
 - ④ - GEOCOMPOSITE WALL DRAIN (FULL WIDTH OF CAP PLUS EXTEND 3' MINIMUM ONTO WINGWALLS; 4'-0" WIDE)
- ITEMS ①, ②, ③, & ④ SHALL BE INCLUDED IN THE COST OF CONCRETE SUPERSTRUCTURE.



REINFORCEMENT BARS INDICATED (E) SHALL BE EPOXY COATED.
* INCLUDES BAR SPLICER
** INCLUDES TOP OF DECK AND EDGES TO THE DRIP NOTCH.



SUPERSTRUCTURE DETAILS
 SECTION 01-09114-00-BR
 NORTH GROVE ROAD
 DEKALB COUNTY
 S.N. 019-4409