

ROUTE NO.	SECTION	COUNTY	TOTAL SHEETS	SHEET NO.
T.R. 155	07-19114-01-SP	SANGAMON	24	2

MECHANICSBURG TOWNSHIP

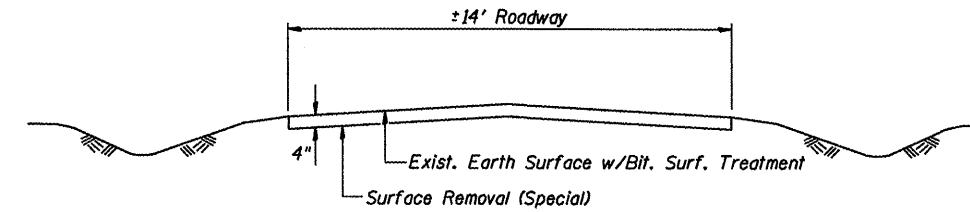
GENERAL NOTES

- WHERE SECTION OR SUBSECTION MONUMENTS ARE ENCOUNTERED, THE ENGINEER SHALL BE NOTIFIED BEFORE ANY SUCH MONUMENTS ARE REMOVED. THE CONTRACTOR SHALL PROTECT AND CAREFULLY PRESERVE ALL PROPERTY MARKS AND MONUMENTS UNTIL THE OWNER, AN AUTHORIZED SURVEYOR OR AGENT HAS WITNESSED OR OTHERWISE REFERENCED THEIR LOCATION.
- THE AREA TO BE SEEDED SHALL CONSIST OF ALL DISTURBED EARTH SURFACES WITHIN THE RIGHT OF WAY AS DIRECTED BY THE ENGINEER.

SEEDING CLASS 2 (SPECIAL) = 5.2 ACRES
- THE LOCATIONS OF EXISTING WATER MAINS, GAS MAINS, ELECTRIC POWER LINES, TELEPHONE LINES, AND OTHER UTILITIES AS SHOWN ON THE PLANS ARE BASED ON CAREFUL FIELD INVESTIGATION AND THE BEST INFORMATION AVAILABLE, BUT ARE NOT GUARANTEED. IT SHALL BE THE CONTRACTOR'S RESPONSIBILITY TO ASCERTAIN THEIR EXACT LOCATION FROM THE UTILITY COMPANIES, MUNICIPALITIES AND FIELD INSPECTION. SEE STANDARD SPECIFICATIONS.

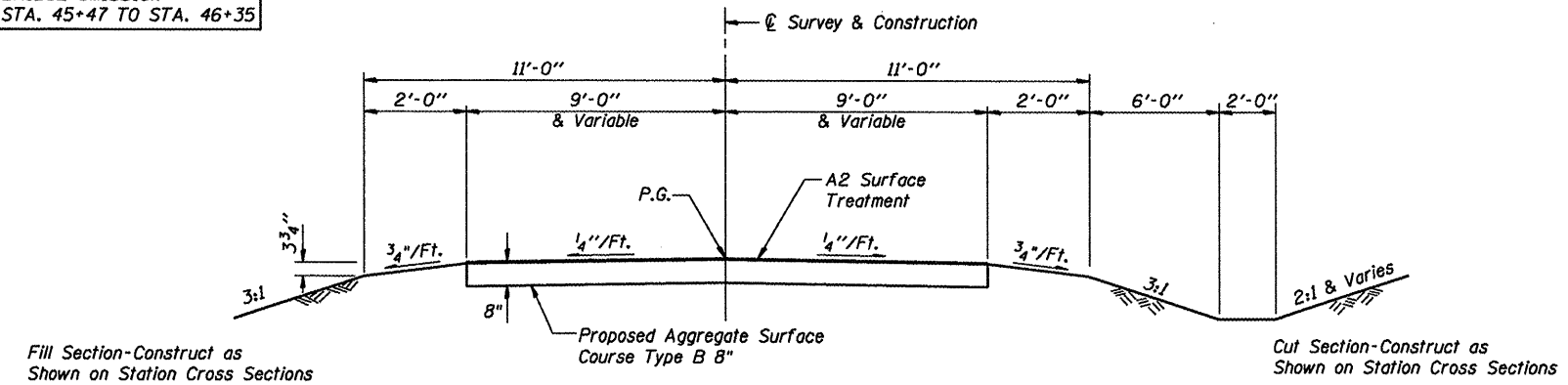
APPLICATION RATES USED IN QUANTITY CALCULATIONS

Granular Materials	-----	2.05 Tons/Cu. Yd.
Bituminous Materials	-----	0.35 Gal/Sq Yd.
Riprap	-----	1.5 Tons/Cu. Yd.



TYPICAL EXISTING ROADWAY CROSS SECTION

BRIDGE OMISSION
STA. 45+47 TO STA. 46+35

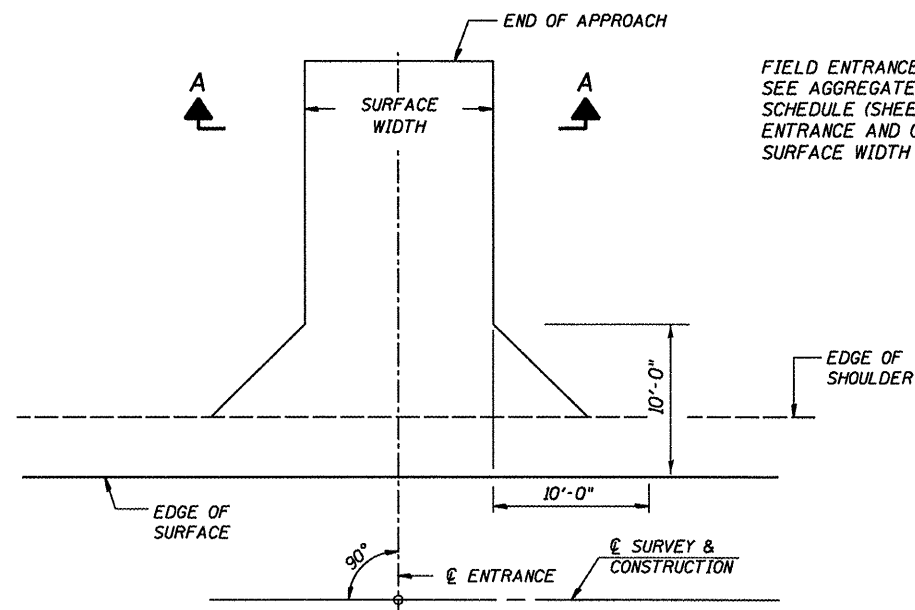


TYPICAL PROPOSED ROADWAY CROSS SECTION

T.R. 155 (WATER TOWER RD)
TRANSITION FROM EXISTING ROADWAY
TO PROPOSED ROADWAY STA 21+90 TO STA 22+65
STA 22+65 TO STA 45+47
STA 46+35 TO STA 55+25
TRANSITION FROM PROPOSED ROADWAY
TO EXISTING ROADWAY STA 55+25 TO STA 56+00

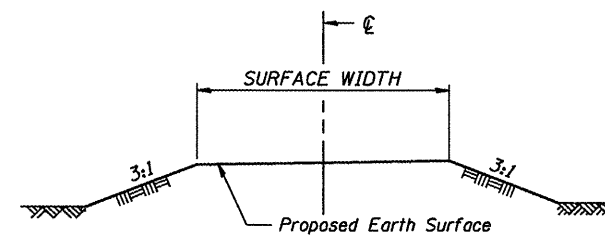
T.R. 484 (DOWNING RD)
STA 100+09 TO STA 104+25
TRANSITION FROM PROPOSED ROADWAY
TO EXISTING ROADWAY STA 104+25 TO STA 105+00

TRANSITION SHOULDERS TO
MATCH BRIDGE WIDTH IN 75'

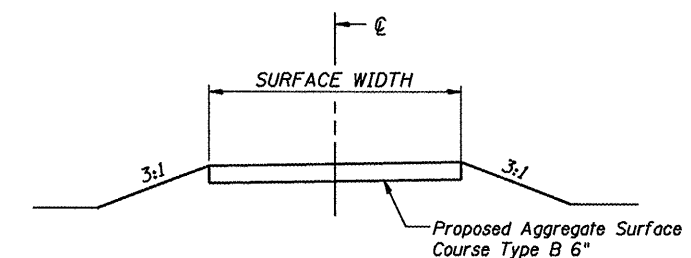


ENTRANCE DETAIL

FIELD ENTRANCE SURFACE WIDTH = 20'
SEE AGGREGATE SURFACE COURSE
SCHEDULE (SHEET 3) FOR PRIVATE
ENTRANCE AND COMMERCIAL ENTRANCE
SURFACE WIDTH



SECTION A-A FE



SECTION A-A PE & CE

GENERAL NOTES
TYPICAL CROSS SECTIONS
T.R. ROUTE 155
SECTION 07-19114-01-SP
MECHANICSBURG TOWNSHIP

CUMMINS ENGINEERING CORPORATION

JOB #: 2205
FILE: 2205TYP
DATE: 4/14/2008