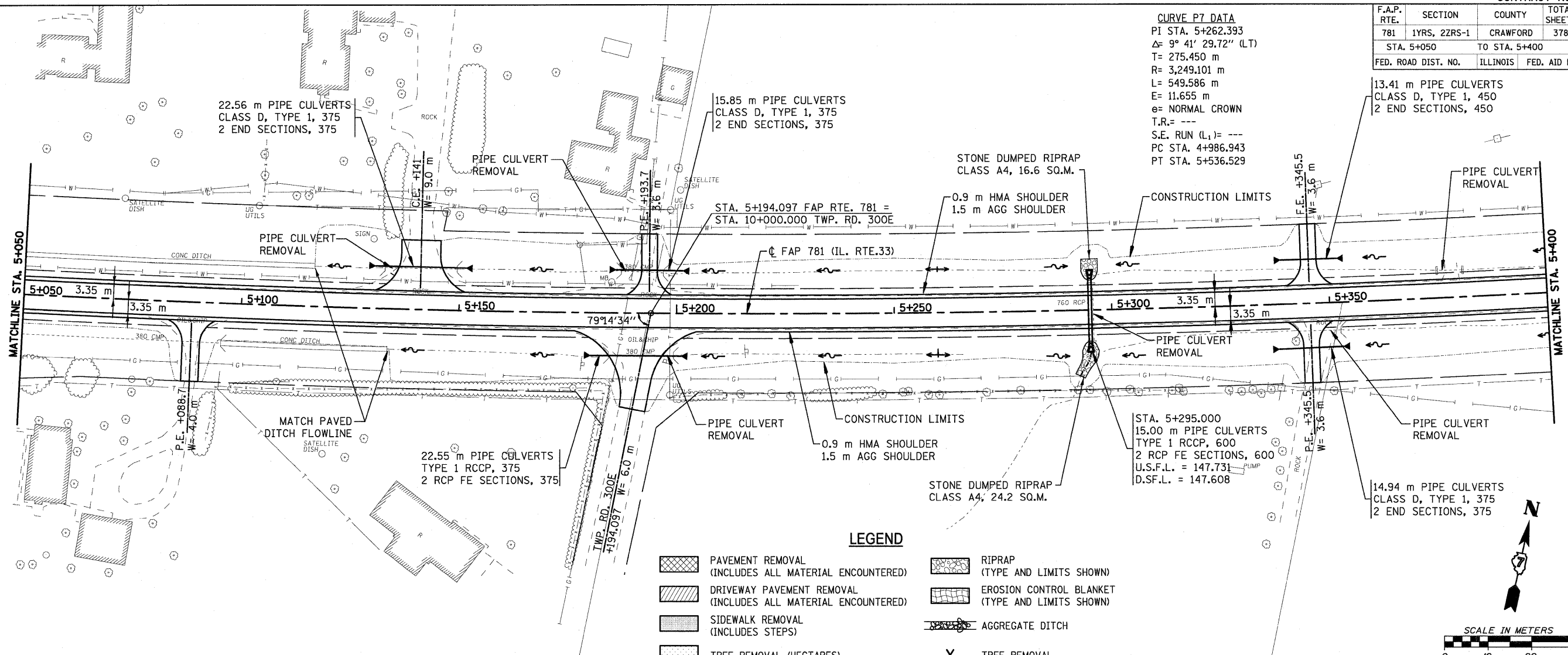


F.A.P. RTE.	SECTION	COUNTY	TOTAL SHEETS	SHEET NO.
781	1YRS, 2ZRS-1	CRAWFORD	378	76
STA. 5+050		TO STA. 5+400		
FED. ROAD DIST. NO.		ILLINOIS	FED. AID PROJECT	

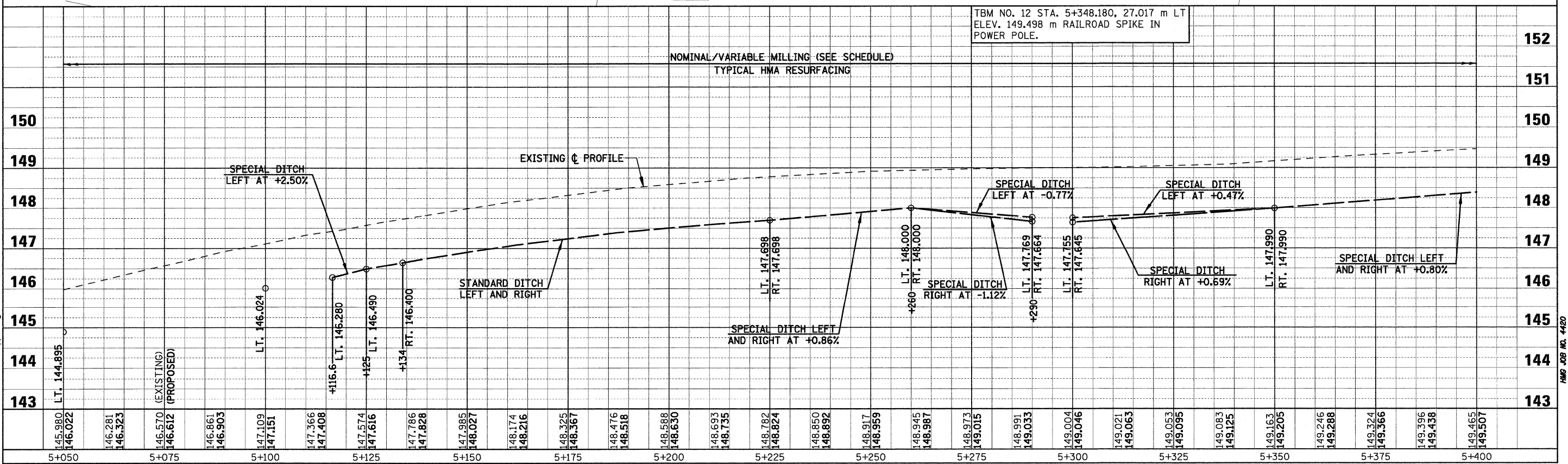
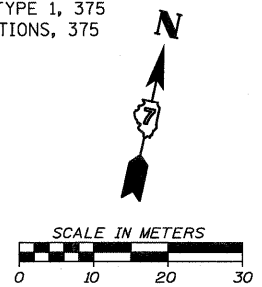
**CURVE P7 DATA**  
 PI STA. 5+262.393  
 $\Delta = 9^\circ 41' 29.72''$  (LT)  
 T = 275.450 m  
 R = 3,249.101 m  
 L = 549.586 m  
 E = 11.655 m  
 e = NORMAL CROWN  
 T.R. = ---  
 S.E. RUN (L<sub>1</sub>) = ---  
 PC STA. 4+986.943  
 PT STA. 5+536.529

13.41 m PIPE CULVERTS  
 CLASS D, TYPE 1, 450  
 2 END SECTIONS, 450



**LEGEND**

	PAVEMENT REMOVAL (INCLUDES ALL MATERIAL ENCOUNTERED)		RIPRAP (TYPE AND LIMITS SHOWN)
	DRIVEWAY PAVEMENT REMOVAL (INCLUDES ALL MATERIAL ENCOUNTERED)		EROSION CONTROL BLANKET (TYPE AND LIMITS SHOWN)
	SIDEWALK REMOVAL (INCLUDES STEPS)		AGGREGATE DITCH
	TREE REMOVAL (HECTARES)		TREE REMOVAL



PLOT DATE = 4/18/2008  
 FILE NAME = H:\4428\78076\_59pp\_10.dgn