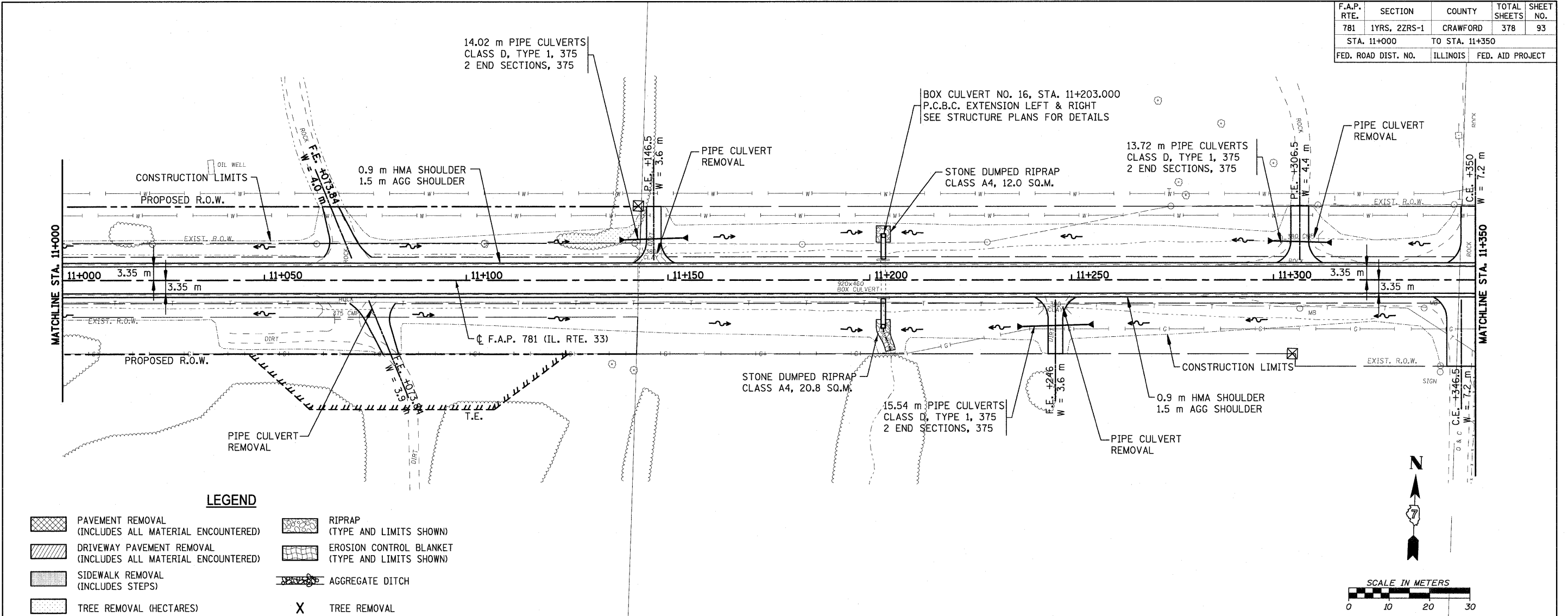
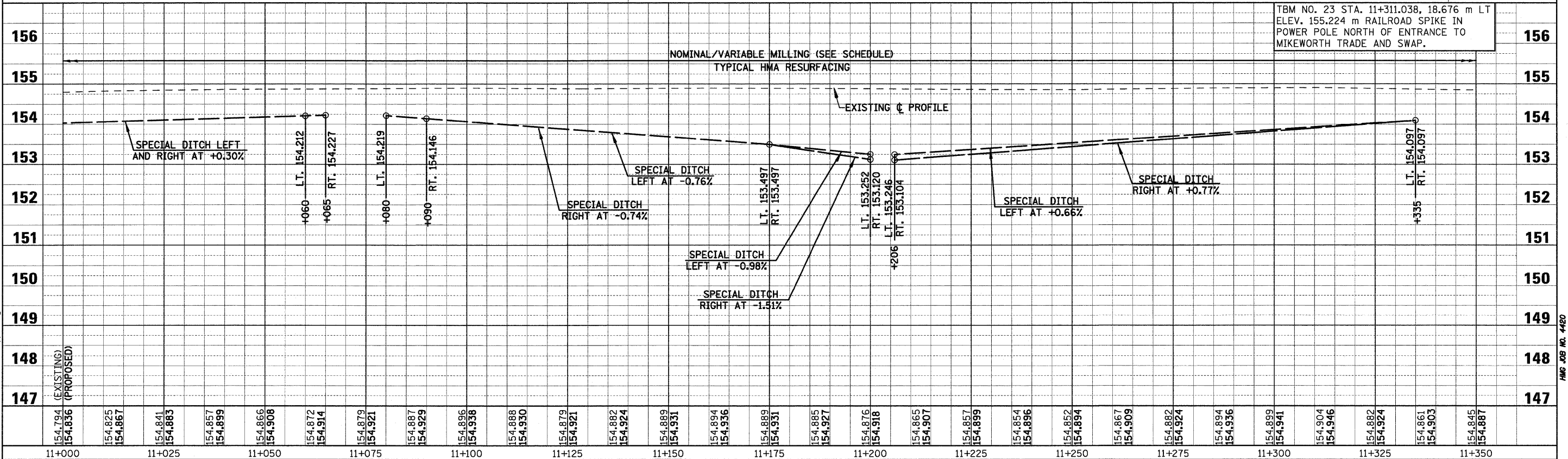


F.A.P. RTE.	SECTION	COUNTY	TOTAL SHEETS	SHEET NO.
781	1YRS, 2ZRS-1	CRAWFORD	378	93
STA. 11+000		TO STA. 11+350		
FED. ROAD DIST. NO.		ILLINOIS	FED. AID PROJECT	



LEGEND

- PAVEMENT REMOVAL (INCLUDES ALL MATERIAL ENCOUNTERED)
- DRIVEWAY PAVEMENT REMOVAL (INCLUDES ALL MATERIAL ENCOUNTERED)
- SIDEWALK REMOVAL (INCLUDES STEPS)
- TREE REMOVAL (HECTARES)
- RIPRAP (TYPE AND LIMITS SHOWN)
- EROSION CONTROL BLANKET (TYPE AND LIMITS SHOWN)
- AGGREGATE DITCH
- TREE REMOVAL



TBM NO. 23 STA. 11+311.038, 18.676 m LT
 ELEV. 155.224 m RAILROAD SPIKE IN
 POWER POLE NORTH OF ENTRANCE TO
 MIKEWORTH TRADE AND SWAP.

PLOT DATE = 4/18/2008
 FILE NAME = H:\1428\70093_50pp_27.dgn