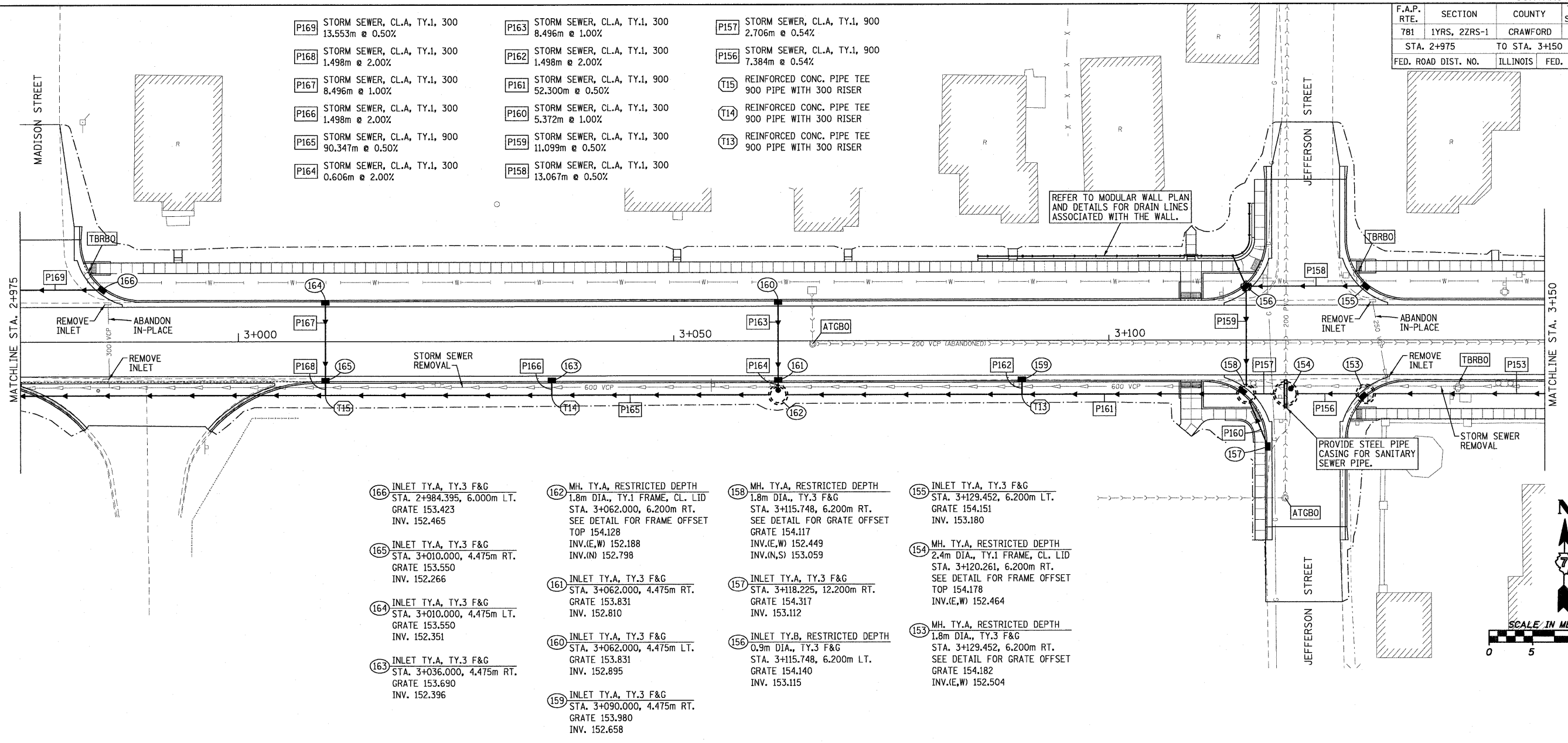
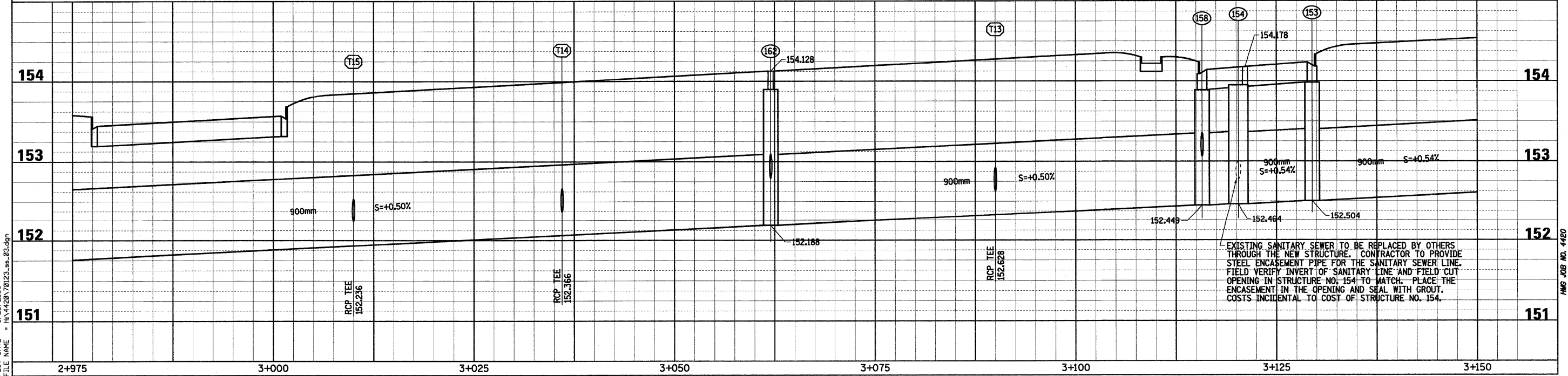
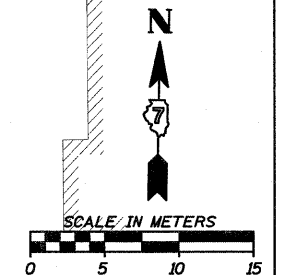


F.A.P. RTE.	SECTION	COUNTY	TOTAL SHEETS	SHEET NO.
781	1YRS, 2ZRS-1	CRAWFORD	378	123
STA. 2+975		TO STA. 3+150		
FED. ROAD DIST. NO.		ILLINOIS	FED. AID PROJECT	

- |  |  |  |
|--|--|--|
| P169 STORM SEWER, CL.A, TY.1, 300<br>13.553m @ 0.50% | P163 STORM SEWER, CL.A, TY.1, 300<br>8.496m @ 1.00%  | P157 STORM SEWER, CL.A, TY.1, 900<br>2.706m @ 0.54%      |
| P168 STORM SEWER, CL.A, TY.1, 300<br>1.498m @ 2.00%  | P162 STORM SEWER, CL.A, TY.1, 300<br>1.498m @ 2.00%  | P156 STORM SEWER, CL.A, TY.1, 900<br>7.384m @ 0.54%      |
| P167 STORM SEWER, CL.A, TY.1, 300<br>8.496m @ 1.00%  | P161 STORM SEWER, CL.A, TY.1, 900<br>52.300m @ 0.50% | T15 REINFORCED CONC. PIPE TEE<br>900 PIPE WITH 300 RISER |
| P166 STORM SEWER, CL.A, TY.1, 300<br>1.498m @ 2.00%  | P160 STORM SEWER, CL.A, TY.1, 300<br>5.372m @ 1.00%  | T14 REINFORCED CONC. PIPE TEE<br>900 PIPE WITH 300 RISER |
| P165 STORM SEWER, CL.A, TY.1, 900<br>90.347m @ 0.50% | P159 STORM SEWER, CL.A, TY.1, 300<br>11.099m @ 0.50% | T13 REINFORCED CONC. PIPE TEE<br>900 PIPE WITH 300 RISER |
| P164 STORM SEWER, CL.A, TY.1, 300<br>0.606m @ 2.00%  | P158 STORM SEWER, CL.A, TY.1, 300<br>13.067m @ 0.50% |  |



- |   |  |   |   |
|---|--|---|---|
| 166 INLET TY.A, TY.3 F&G<br>STA. 2+984.395, 6.000m LT.<br>GRATE 153.423<br>INV. 152.465 | 162 MH. TY.A, RESTRICTED DEPTH<br>1.8m DIA., TY.1 FRAME, CL. LID<br>STA. 3+062.000, 6.200m RT.<br>SEE DETAIL FOR FRAME OFFSET<br>TOP 154.128<br>INV.(E,W) 152.188<br>INV.(N) 152.798 | 158 MH. TY.A, RESTRICTED DEPTH<br>1.8m DIA., TY.3 F&G<br>STA. 3+115.748, 6.200m RT.<br>SEE DETAIL FOR GRATE OFFSET<br>GRATE 154.117<br>INV.(E,W) 152.449<br>INV.(N,S) 153.059 | 155 INLET TY.A, TY.3 F&G<br>STA. 3+129.452, 6.200m LT.<br>GRATE 154.151<br>INV. 153.180   |
| 165 INLET TY.A, TY.3 F&G<br>STA. 3+010.000, 4.475m RT.<br>GRATE 153.550<br>INV. 152.266 | 161 INLET TY.A, TY.3 F&G<br>STA. 3+062.000, 4.475m RT.<br>GRATE 153.831<br>INV. 152.810  | 157 INLET TY.A, TY.3 F&G<br>STA. 3+118.225, 12.200m RT.<br>GRATE 154.317<br>INV. 153.112  | 154 MH. TY.A, RESTRICTED DEPTH<br>2.4m DIA., TY.1 FRAME, CL. LID<br>STA. 3+120.261, 6.200m RT.<br>SEE DETAIL FOR FRAME OFFSET<br>TOP 154.178<br>INV.(E,W) 152.464 |
| 164 INLET TY.A, TY.3 F&G<br>STA. 3+010.000, 4.475m LT.<br>GRATE 153.550<br>INV. 152.351 | 160 INLET TY.A, TY.3 F&G<br>STA. 3+062.000, 4.475m LT.<br>GRATE 153.831<br>INV. 152.895  | 156 INLET TY.B, RESTRICTED DEPTH<br>0.9m DIA., TY.3 F&G<br>STA. 3+115.748, 6.200m LT.<br>GRATE 154.140<br>INV. 153.115  | 153 MH. TY.A, RESTRICTED DEPTH<br>1.8m DIA., TY.3 F&G<br>STA. 3+129.452, 6.200m RT.<br>SEE DETAIL FOR GRATE OFFSET<br>GRATE 154.182<br>INV.(E,W) 152.504          |
| 163 INLET TY.A, TY.3 F&G<br>STA. 3+036.000, 4.475m RT.<br>GRATE 153.690<br>INV. 152.396 | 159 INLET TY.A, TY.3 F&G<br>STA. 3+090.000, 4.475m RT.<br>GRATE 153.980<br>INV. 152.658  |   |   |



Sheet: 3  
Angle: 0.9788  
Chain: P\_IL33

PLOT DATE = 3/20/2009  
FILE NAME = H:\4428\70123.ss\_03.dgn

HMG JOB NO. 4420