

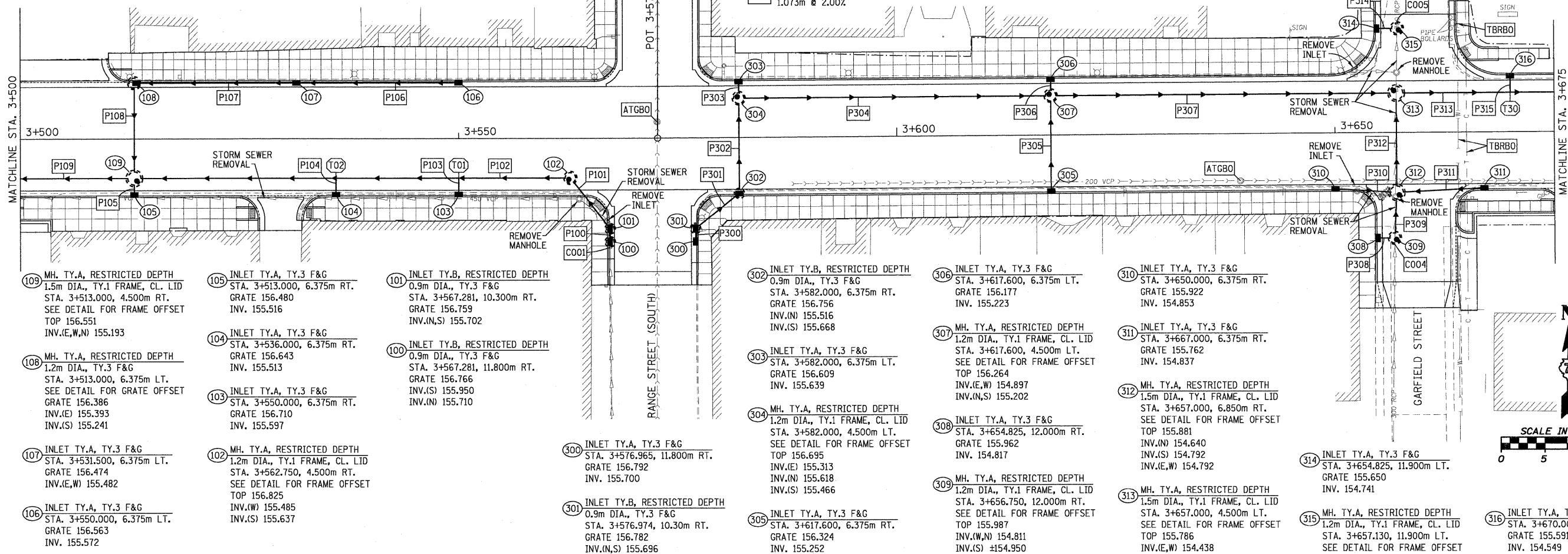
F.A.P. RTE.	SECTION	COUNTY	TOTAL SHEETS	SHEET NO.
781	1YRS, 22RS-1	CRAWFORD	378	126
STA. 3+500 TO STA. 3+675				
FED. ROAD DIST. NO.		ILLINOIS	FED. AID PROJECT	

- C001 RECONNECT EXIST. 450mm PIPE TO INLET NO. 100, INV. ±155.950. VERIFY EXIST. PIPE INVERT AND FIELD CUT OPENING IN STRUCTURE. COST INCIDENTAL TO COST OF STORM SEWER ITEMS.
- P100 STORM SEWER, CL.A, TY.1, 450 0.797m @ 1.00%
- P101 STORM SEWER, CL.A, TY.1, 450 6.473m @ 1.00%
- P102 STORM SEWER, CL.A, TY.1, 600 48.614m @ 0.60%
- P103 STORM SEWER, CL.A, TY.1, 300 1.648m @ 2.00%
- P104 STORM SEWER, CL.A, TY.1, 300 1.648m @ 2.00%
- P105 STORM SEWER, CL.A, TY.1, 300 0.913m @ 2.00%
- P106 STORM SEWER, CL.A, TY.1, 300 18.046m @ 0.50%
- P107 STORM SEWER, CL.A, TY.1, 300 17.698m @ 0.50%
- P108 STORM SEWER, CL.A, TY.1, 450 9.636m @ 0.50%
- P109 STORM SEWER, CL.A, TY.1, 600 43.655m @ 0.60%

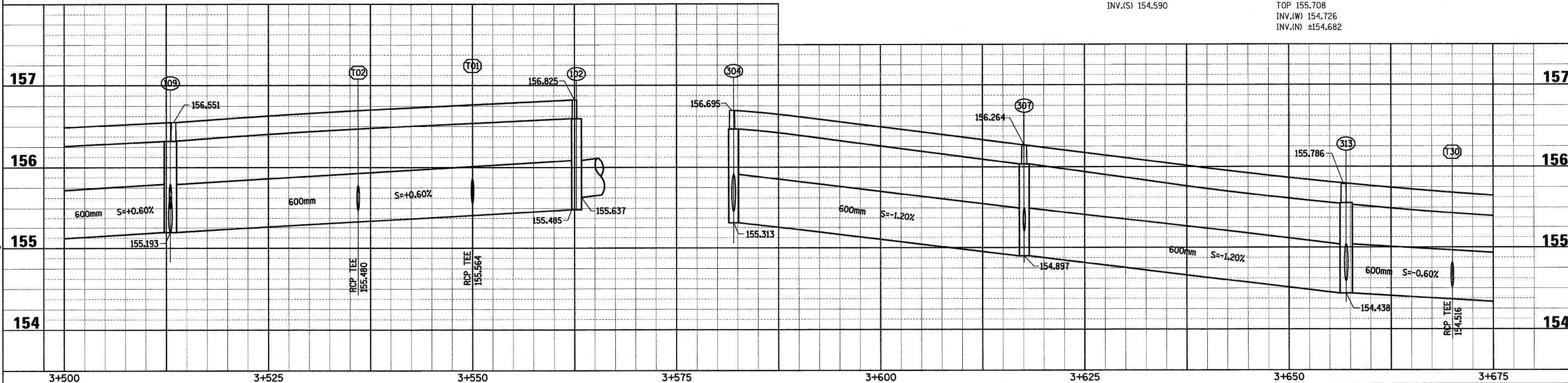
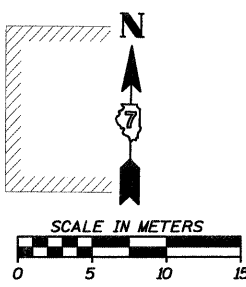
- T01 REINFORCED CONC. PIPE TEE 600 PIPE WITH 300 RISER
- T02 REINFORCED CONC. PIPE TEE 600 PIPE WITH 300 RISER

- P300 STORM SEWER, CL.A, TY.1, 300 0.863m @ 0.50%
- P301 STORM SEWER, CL.A, TY.1, 300 5.558m @ 0.50%
- P302 STORM SEWER, CL.A, TY.1, 450 9.988m @ 0.50%
- P303 STORM SEWER, CL.A, TY.1, 300 1.073m @ 2.00%
- P304 STORM SEWER, CL.A, TY.1, 600 34.648m @ 1.20%
- P305 STORM SEWER, CL.A, TY.1, 300 10.073m @ 0.50%
- P306 STORM SEWER, CL.A, TY.1, 300 1.073m @ 2.00%
- P307 STORM SEWER, CL.A, TY.1, 600 38.246m @ 1.20%
- P308 STORM SEWER, CL.A, TY.1, 300 1.123m @ 0.50%
- C004 RECONNECT EXIST. 300mm PIPE TO INLET NO. 309, INV. ±154.950. VERIFY EXIST. PIPE INVERT AND FIELD CUT OPENING IN STRUCTURE. COST INCIDENTAL TO COST OF STORM SEWER ITEMS.
- P309 STORM SEWER, CL.A, TY.1, 300 3.847m @ 0.50%
- P310 STORM SEWER, CL.A, TY.1, 300 6.055m @ 1.00%

- P311 STORM SEWER, CL.A, TY.1, 300 9.050m @ 0.50%
- P312 STORM SEWER, CL.A, TY.1, 450 3.847m @ 0.50%
- P313 STORM SEWER, CL.A, TY.1, 600 32.030m @ 0.60%
- P314 STORM SEWER, CL.A, TY.1, 300 1.503m @ 1.00%
- C005 RECONNECT EXIST. 300mm PIPE TO INLET NO. 315, INV. ±154.682. VERIFY EXIST. PIPE INVERT AND FIELD CUT OPENING IN STRUCTURE. COST INCIDENTAL TO COST OF STORM SEWER ITEMS.
- P315 STORM SEWER, CL.A, TY.1, 300 1.648m @ 2.00%
- T30 REINFORCED CONC. PIPE TEE 600 PIPE WITH 300 RISER



- 109 MH. TY.A, RESTRICTED DEPTH 1.5m DIA., TY.1 FRAME, CL. LID STA. 3+513.000, 4.500m RT. SEE DETAIL FOR FRAME OFFSET TOP 156.551 INV.(E,W,N) 155.193
- 108 MH. TY.A, RESTRICTED DEPTH 1.2m DIA., TY.3 F&G STA. 3+513.000, 6.375m LT. SEE DETAIL FOR GRATE OFFSET GRATE 156.386 INV.(E) 155.393 INV.(S) 155.241
- 107 INLET TY.A, TY.3 F&G STA. 3+531.500, 6.375m LT. GRATE 156.474 INV.(E,W) 155.482
- 106 INLET TY.A, TY.3 F&G STA. 3+550.000, 6.375m LT. GRATE 156.563 INV. 155.572
- 105 INLET TY.A, TY.3 F&G STA. 3+513.000, 6.375m RT. GRATE 156.480 INV. 155.516
- 104 INLET TY.A, TY.3 F&G STA. 3+536.000, 6.375m RT. GRATE 156.643 INV. 155.513
- 103 INLET TY.A, TY.3 F&G STA. 3+550.000, 6.375m RT. GRATE 156.710 INV. 155.597
- 102 MH. TY.A, RESTRICTED DEPTH 1.2m DIA., TY.1 FRAME, CL. LID STA. 3+562.750, 4.500m RT. SEE DETAIL FOR FRAME OFFSET TOP 156.825 INV.(W) 155.485 INV.(S) 155.637
- 101 INLET TY.B, RESTRICTED DEPTH 0.9m DIA., TY.3 F&G STA. 3+567.281, 10.300m RT. GRATE 156.759 INV.(N,S) 155.702
- 100 INLET TY.B, RESTRICTED DEPTH 0.9m DIA., TY.3 F&G STA. 3+567.281, 11.800m RT. GRATE 156.766 INV.(S) 155.950 INV.(N) 155.710
- 302 INLET TY.B, RESTRICTED DEPTH 0.9m DIA., TY.3 F&G STA. 3+582.000, 6.375m RT. GRATE 156.756 INV.(N) 155.516 INV.(S) 155.668
- 303 INLET TY.A, TY.3 F&G STA. 3+582.000, 6.375m LT. GRATE 156.609 INV. 155.639
- 304 MH. TY.A, RESTRICTED DEPTH 1.2m DIA., TY.1 FRAME, CL. LID STA. 3+582.000, 4.500m RT. SEE DETAIL FOR FRAME OFFSET TOP 156.695 INV.(E) 155.313 INV.(N) 155.618 INV.(S) 155.466
- 300 INLET TY.A, TY.3 F&G STA. 3+576.965, 11.800m RT. GRATE 156.792 INV. 155.700
- 301 INLET TY.B, RESTRICTED DEPTH 0.9m DIA., TY.3 F&G STA. 3+576.974, 10.30m RT. GRATE 156.782 INV.(N,S) 155.696
- 306 INLET TY.A, TY.3 F&G STA. 3+617.600, 6.375m LT. GRATE 156.177 INV. 155.223
- 307 MH. TY.A, RESTRICTED DEPTH 1.2m DIA., TY.1 FRAME, CL. LID STA. 3+617.600, 4.500m LT. SEE DETAIL FOR FRAME OFFSET TOP 156.264 INV.(E,W) 154.897 INV.(S) 155.202
- 308 INLET TY.A, TY.3 F&G STA. 3+654.825, 12.000m RT. GRATE 155.962 INV. 154.817
- 309 MH. TY.A, RESTRICTED DEPTH 1.2m DIA., TY.1 FRAME, CL. LID STA. 3+656.750, 12.000m RT. SEE DETAIL FOR FRAME OFFSET TOP 155.987 INV.(W,N) 154.811 INV.(S) ±154.950
- 310 INLET TY.A, TY.3 F&G STA. 3+650.000, 6.375m RT. GRATE 155.922 INV. 154.853
- 311 INLET TY.A, TY.3 F&G STA. 3+667.000, 6.375m RT. GRATE 155.762 INV. 154.837
- 312 MH. TY.A, RESTRICTED DEPTH 1.5m DIA., TY.1 FRAME, CL. LID STA. 3+657.000, 6.850m RT. SEE DETAIL FOR FRAME OFFSET TOP 155.881 INV.(N) 154.640 INV.(S) 154.792 INV.(E,W) 154.792
- 314 INLET TY.A, TY.3 F&G STA. 3+654.825, 11.900m LT. GRATE 155.650 INV. 154.741
- 313 MH. TY.A, RESTRICTED DEPTH 1.5m DIA., TY.1 FRAME, CL. LID STA. 3+657.000, 4.500m LT. SEE DETAIL FOR FRAME OFFSET TOP 155.786 INV.(E,W) 154.438 INV.(S) 154.590
- 315 MH. TY.A, RESTRICTED DEPTH 1.2m DIA., TY.1 FRAME, CL. LID STA. 3+657.130, 11.900m LT. SEE DETAIL FOR FRAME OFFSET TOP 155.708 INV.(W) 154.726 INV.(N) ±154.682
- 316 INLET TY.A, TY.3 F&G STA. 3+670.000, 6.375m LT. GRATE 155.591 INV. 154.549



Sheet: 6
 Angle: 1.0772
 Chain: P_IL33

PLOT DATE = 3/28/2008
 FILE NAME = H:\1420\70126-nm_06.dgn

HMG JOB NO. 4460