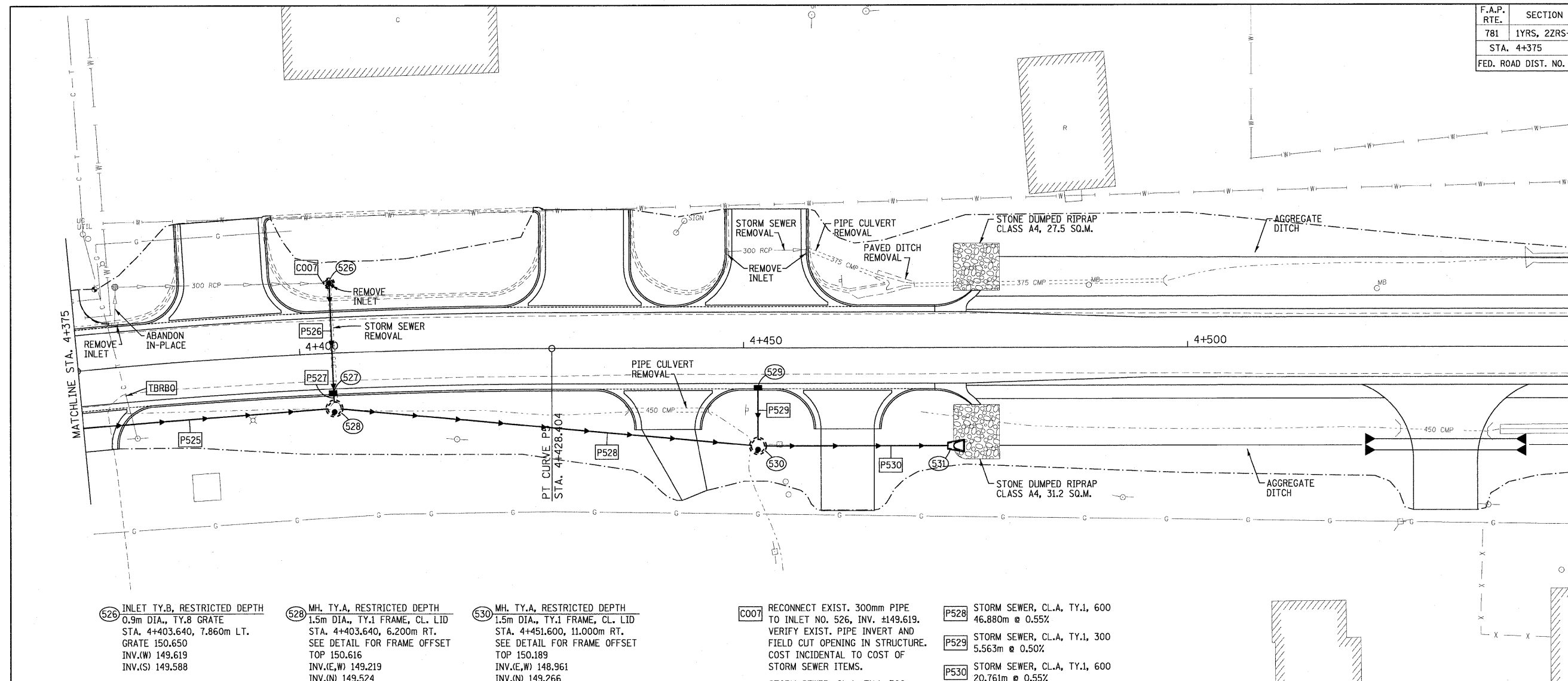
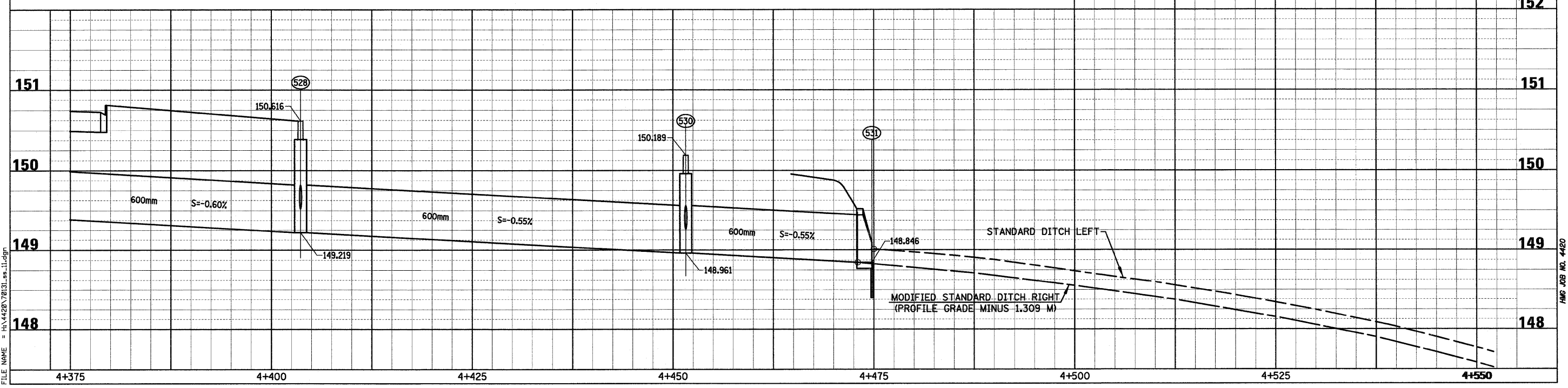
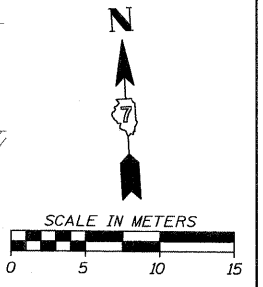


F.A.P. RTE.	SECTION	COUNTY	TOTAL SHEETS	SHEET NO.
781	1YRS, 2ZRS-1	CRAWFORD	378	131
STA. 4+375		TO STA. 4+550		
FED. ROAD DIST. NO.		ILLINOIS	FED. AID PROJECT	



- 526 INLET TY.B, RESTRICTED DEPTH  
0.9m DIA., TY.8 GRATE  
STA. 4+403.640, 7.860m LT.  
GRATE 150.650  
INV.(W) 149.619  
INV.(S) 149.588
- 527 INLET TY.B, RESTRICTED DEPTH  
0.9m DIA., TY.3 F&G  
STA. 4+403.640, 4.475m RT.  
GRATE 150.430  
INV.(N,S) 149.530
- 528 MH. TY.A, RESTRICTED DEPTH  
1.5m DIA., TY.1 FRAME, CL. LID  
STA. 4+403.640, 6.200m RT.  
SEE DETAIL FOR FRAME OFFSET  
TOP 150.616  
INV.(E,W) 149.219  
INV.(N) 149.524
- 529 INLET TY.A, TY.3 F&G  
STA. 4+451.600, 4.475m RT.  
GRATE 150.172  
INV. 149.294
- 530 MH. TY.A, RESTRICTED DEPTH  
1.5m DIA., TY.1 FRAME, CL. LID  
STA. 4+451.600, 11.000m RT.  
SEE DETAIL FOR FRAME OFFSET  
TOP 150.189  
INV.(E,W) 148.961  
INV.(N) 149.266
- 531 P.R.C. FLARED END SECTION, 600  
STA. 4+474.750, 11.000m RT.  
INV. 148.846

- C007 RECONNECT EXIST. 300mm PIPE  
TO INLET NO. 526, INV. ±149.619.  
VERIFY EXIST. PIPE INVERT AND  
FIELD CUT OPENING IN STRUCTURE.  
COST INCIDENTAL TO COST OF  
STORM SEWER ITEMS.
- P526 STORM SEWER, CL.A, TY.1, 300  
11.516m @ 0.50%
- P527 STORM SEWER, CL.A, TY.1, 300  
0.581m @ 1.00%
- P528 STORM SEWER, CL.A, TY.1, 600  
46.880m @ 0.55%
- P529 STORM SEWER, CL.A, TY.1, 300  
5.563m @ 0.50%
- P530 STORM SEWER, CL.A, TY.1, 600  
20.761m @ 0.55%



Sheet: 11  
Angle: 359.6778  
Chain: P\_IL33

PLOT DATE = 3/20/2008  
FILE NAME = P:\1420\70131.esi.dgn

HMG JOB NO. 4420