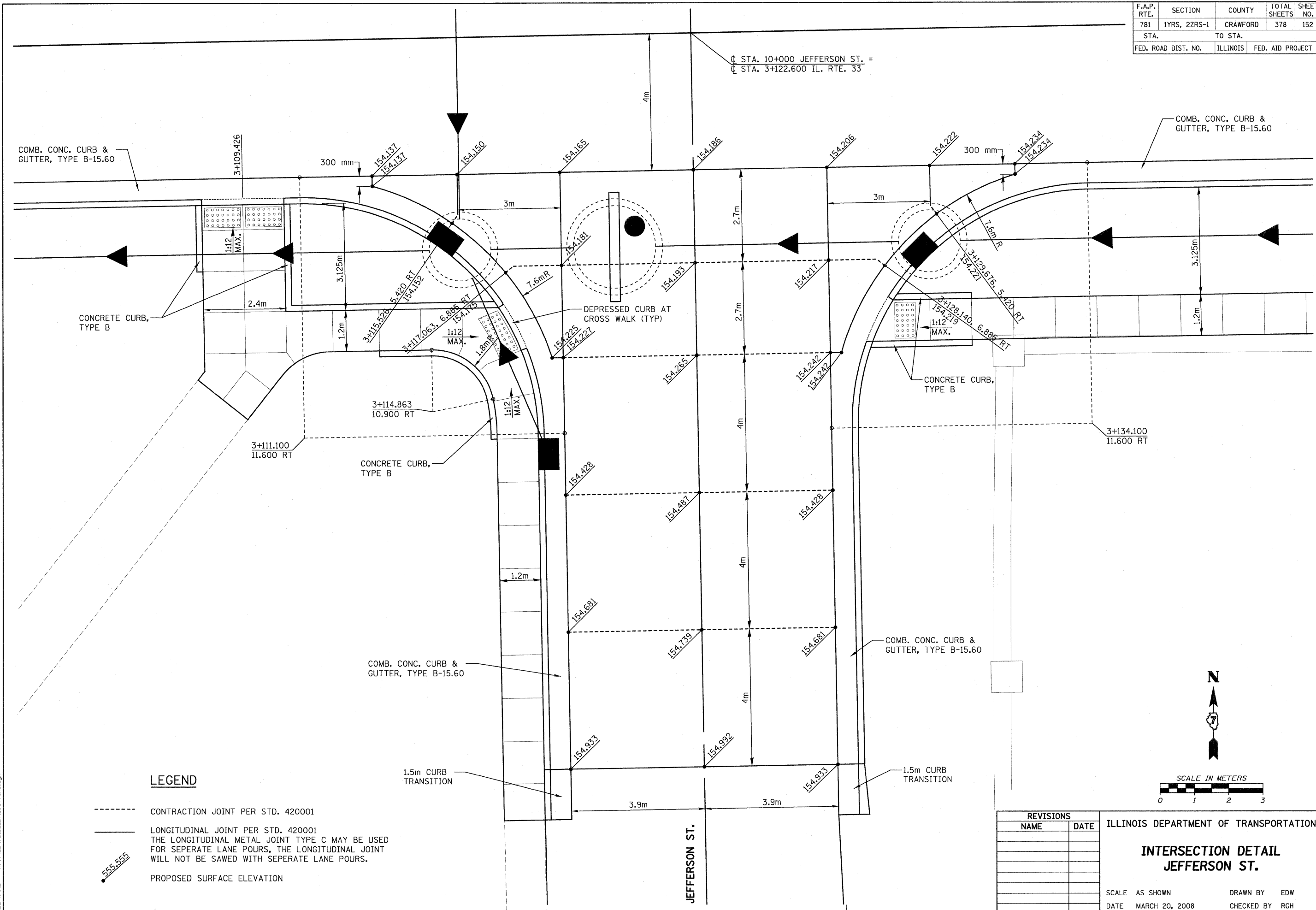
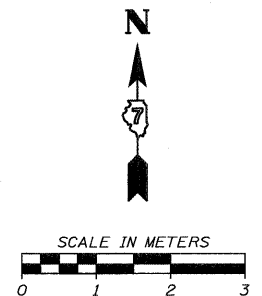


STA. 10+000 JEFFERSON ST. =
 STA. 3+122.600 IL. RTE. 33



LEGEND

- CONTRACTION JOINT PER STD. 420001
- LONGITUDINAL JOINT PER STD. 420001
 THE LONGITUDINAL METAL JOINT TYPE C MAY BE USED FOR SEPERATE LANE POURS, THE LONGITUDINAL JOINT WILL NOT BE SAWED WITH SEPERATE LANE POURS.
- PROPOSED SURFACE ELEVATION



REVISIONS	
NAME	DATE

ILLINOIS DEPARTMENT OF TRANSPORTATION

**INTERSECTION DETAIL
 JEFFERSON ST.**

SCALE AS SHOWN DRAWN BY EDW
 DATE MARCH 20, 2008 CHECKED BY RGH

PLOT DATE = 3/20/2008
 FILE NAME = H:\442670052_int_Jeff.ras.dgn

H. M. & G. NO. 4420