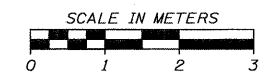
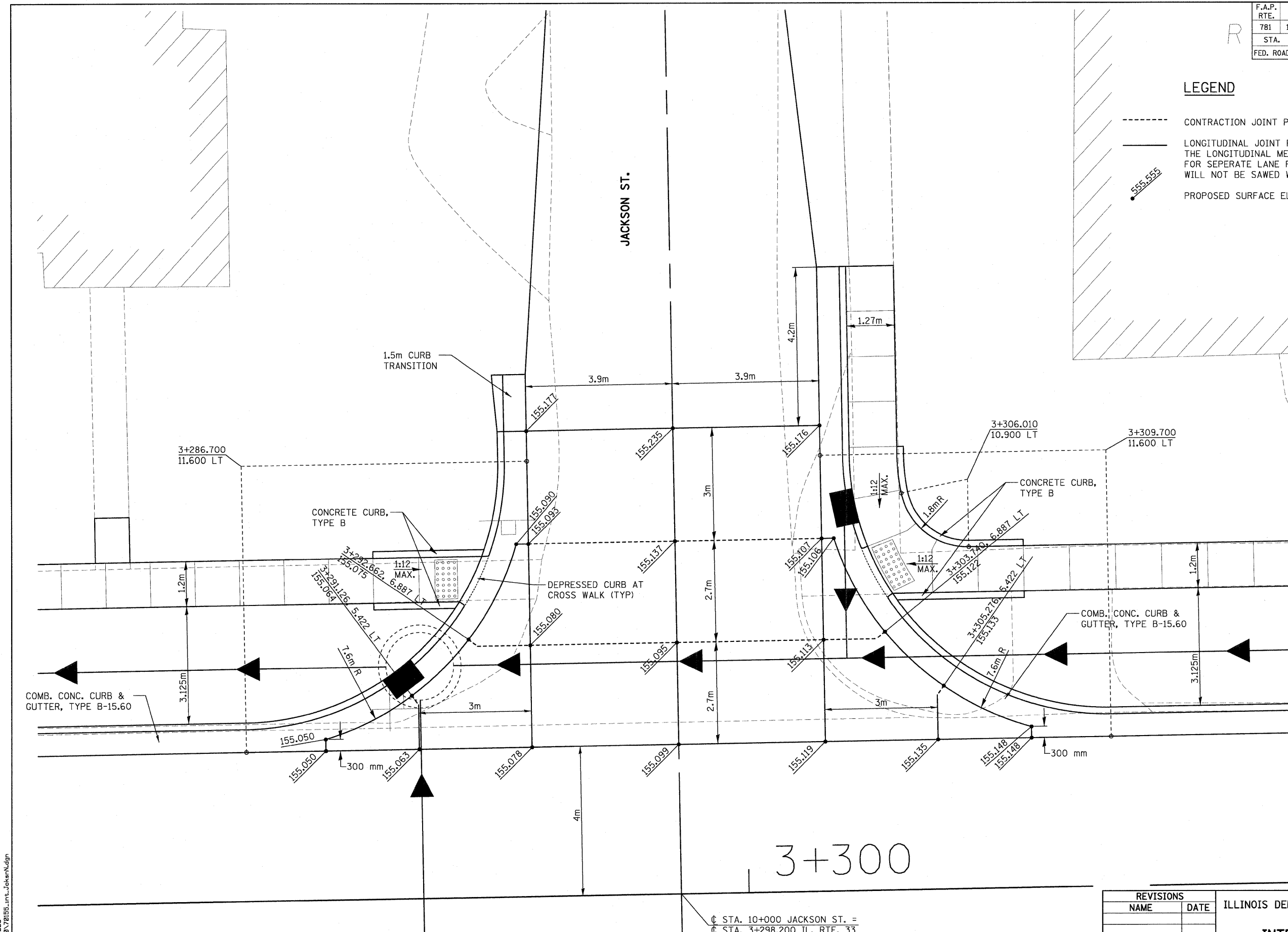


F.A.P. RTE.	SECTION	COUNTY	TOTAL SHEETS	SHEET NO.
781	1YRS, 2ZRS-1	CRAWFORD	378	155
STA.		TO STA.		
FED. ROAD DIST. NO.		ILLINOIS	FED. AID PROJECT	

LEGEND

- CONTRACTION JOINT PER STD. 420001
- LONGITUDINAL JOINT PER STD. 420001
THE LONGITUDINAL METAL JOINT TYPE C MAY BE USED FOR SEPERATE LANE POURS, THE LONGITUDINAL JOINT WILL NOT BE SAWED WITH SEPERATE LANE POURS.
- 555.555 PROPOSED SURFACE ELEVATION



3+300

CL STA. 10+000 JACKSON ST. =
CL STA. 3+298.200 IL. RTE. 33

REVISIONS	
NAME	DATE

ILLINOIS DEPARTMENT OF TRANSPORTATION
**INTERSECTION DETAIL
JACKSON ST.**
SCALE AS SHOWN DRAWN BY EDW
DATE MARCH 20, 2008 CHECKED BY RGH

PLOT DATE = 3/20/2008
FILE NAME = H:\44207\0155.int_joken\dgn

H. M. & G. NO. 4420