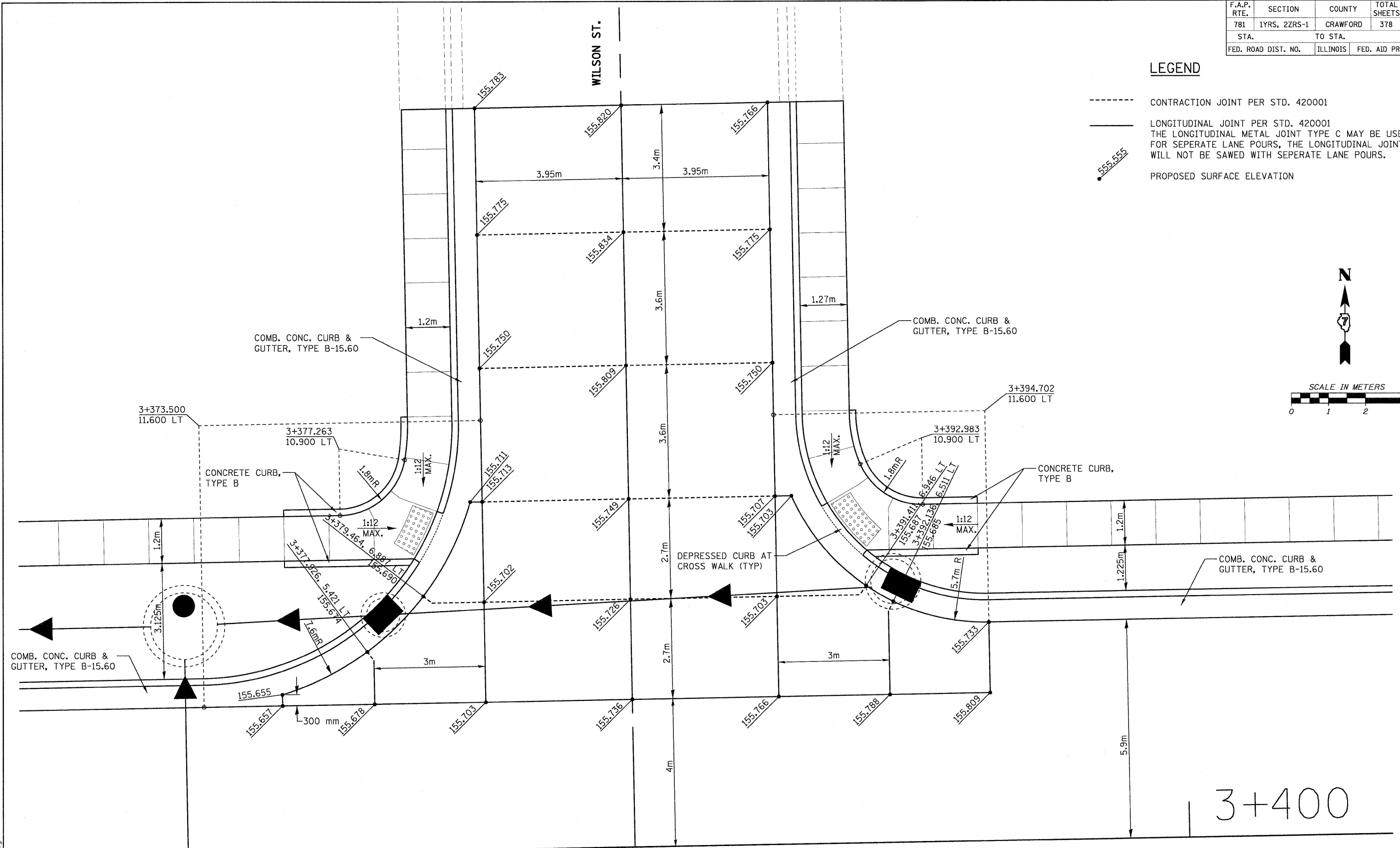
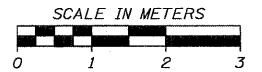


F.A.P. RTE.	SECTION	COUNTY	TOTAL SHEETS	SHEET NO.
781	1YRS, 2ZRS-1	CRAWFORD	378	157
STA.		TO STA.		
FED. ROAD DIST. NO.		ILLINOIS	FED. AID PROJECT	

LEGEND

- CONTRACTION JOINT PER STD. 420001
- LONGITUDINAL JOINT PER STD. 420001
THE LONGITUDINAL METAL JOINT TYPE C MAY BE USED FOR SEPERATE LANE POURS, THE LONGITUDINAL JOINT WILL NOT BE SAWED WITH SEPERATE LANE POURS.
- 555.555 PROPOSED SURFACE ELEVATION



3+400

© STA. 10+000 WILSON ST. =
© STA. 3+385.050 IL. RTE. 33

REVISIONS		ILLINOIS DEPARTMENT OF TRANSPORTATION
NAME	DATE	
		INTERSECTION DETAIL WILSON ST.
		SCALE AS SHOWN DRAWN BY EDW
		DATE MARCH 20, 2008 CHECKED BY RGH

PLOT DATE = 3/20/2008
 FILE NAME = H:\4420\78157_int.WilsonN.dgn

H. M. & G. NO. 4420