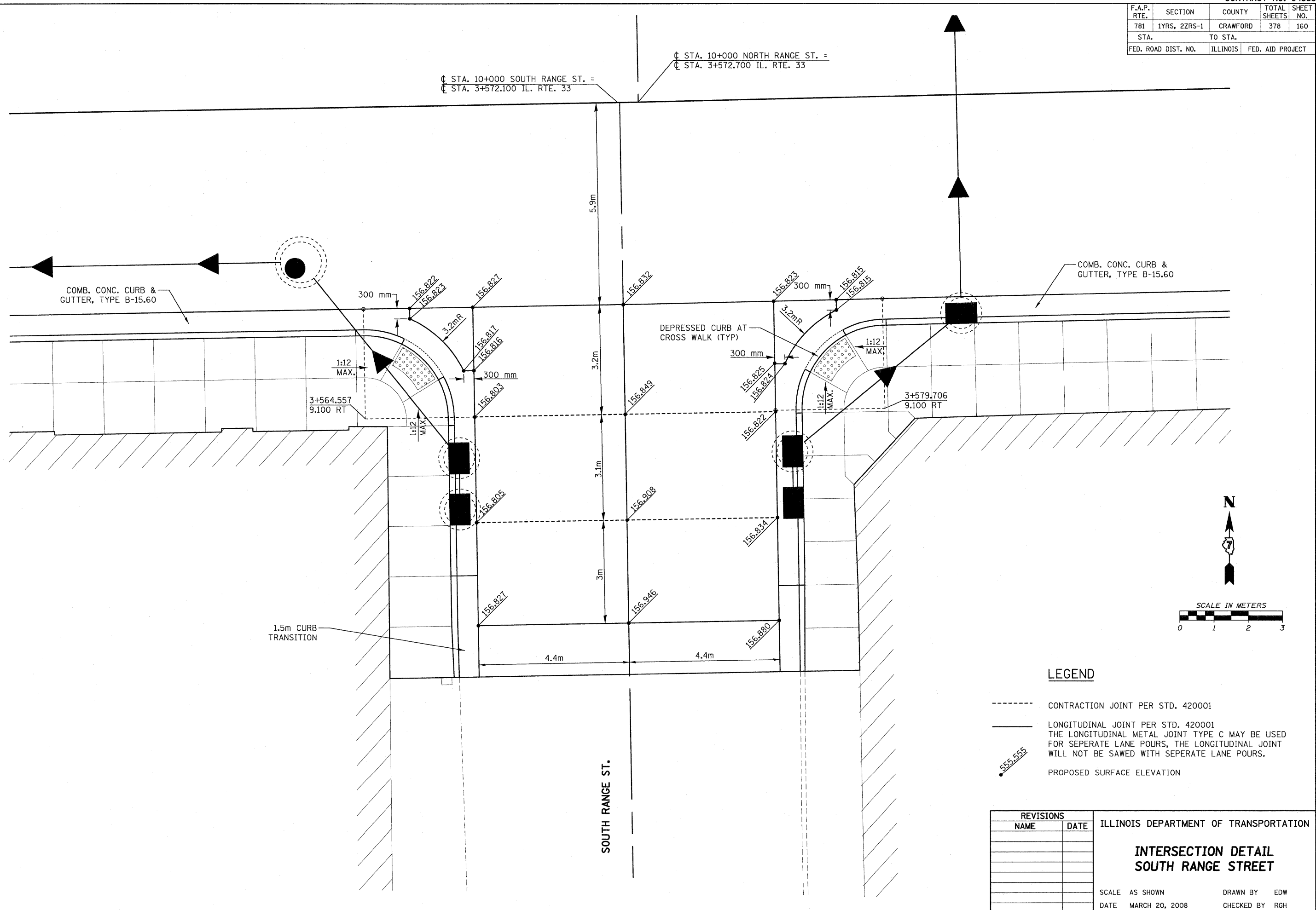


F.A.P. RTE.	SECTION	COUNTY	TOTAL SHEETS	SHEET NO.
781	1YRS, 2ZRS-1	CRAWFORD	378	160
STA.		TO STA.		
FED. ROAD DIST. NO.		ILLINOIS	FED. AID PROJECT	

Ⓞ STA. 10+000 SOUTH RANGE ST. =  
 Ⓞ STA. 3+572.100 IL. RTE. 33  
 Ⓞ STA. 10+000 NORTH RANGE ST. =  
 Ⓞ STA. 3+572.700 IL. RTE. 33



**LEGEND**

- CONTRACTION JOINT PER STD. 420001
- LONGITUDINAL JOINT PER STD. 420001  
THE LONGITUDINAL METAL JOINT TYPE C MAY BE USED FOR SEPERATE LANE POURS, THE LONGITUDINAL JOINT WILL NOT BE SAWED WITH SEPERATE LANE POURS.
- 555.555 PROPOSED SURFACE ELEVATION

REVISIONS		ILLINOIS DEPARTMENT OF TRANSPORTATION
NAME	DATE	
		<p align="center"><b>INTERSECTION DETAIL</b> <b>SOUTH RANGE STREET</b></p> <p>SCALE AS SHOWN      DRAWN BY EDW DATE MARCH 20, 2008      CHECKED BY RGH</p>

PLOT DATE = 3/29/2008  
 FILE NAME = H:\14420\70160.mt\_RangeS.dgn

H. M. & G. NO. 4420