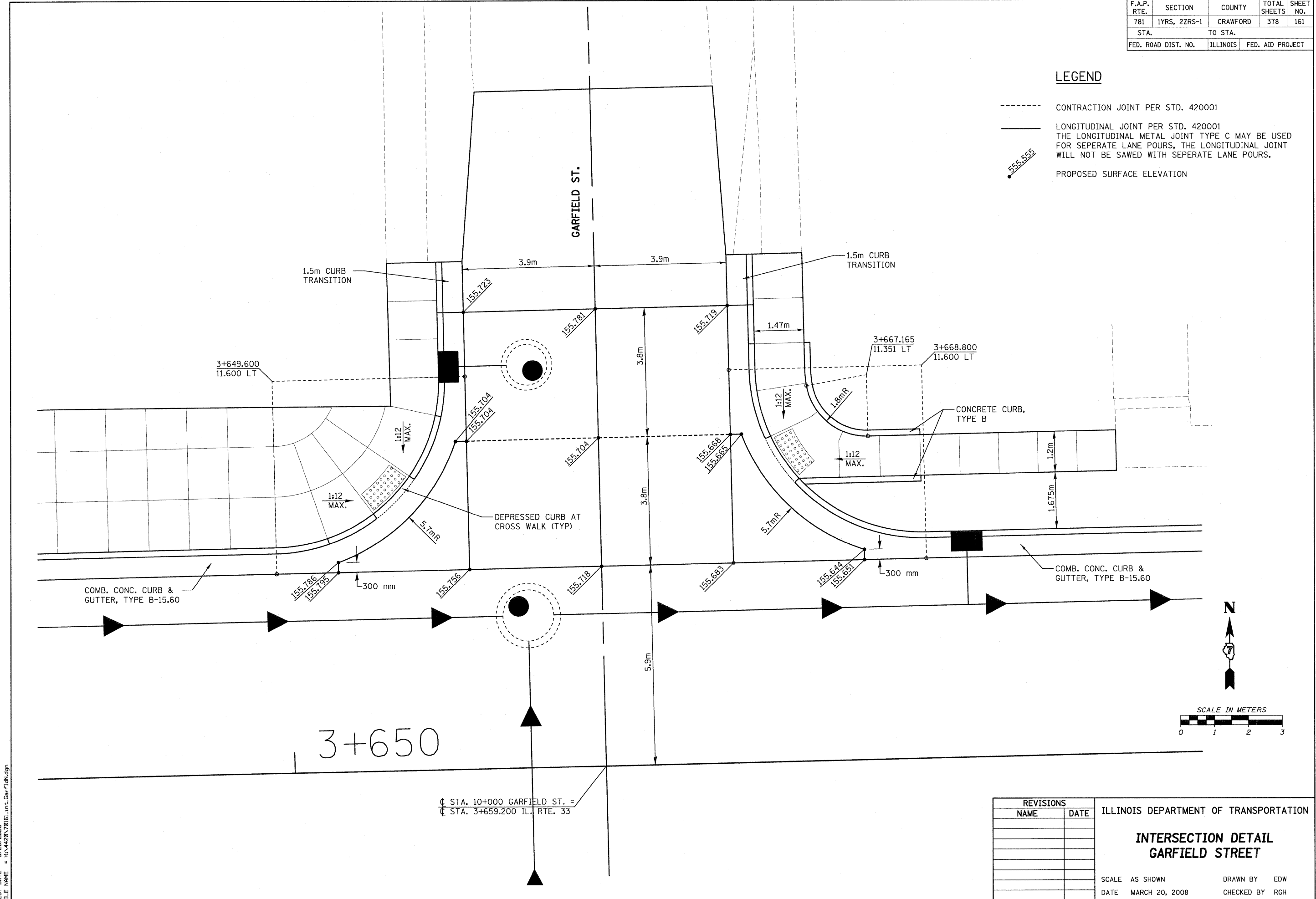


F.A.P. RTE.	SECTION	COUNTY	TOTAL SHEETS	SHEET NO.
781	1YRS, 2ZRS-1	CRAWFORD	378	161
STA.		TO STA.		
FED. ROAD DIST. NO.	ILLINOIS	FED. AID PROJECT		

LEGEND

- CONTRACTION JOINT PER STD. 420001
- LONGITUDINAL JOINT PER STD. 420001
THE LONGITUDINAL METAL JOINT TYPE C MAY BE USED FOR SEPERATE LANE POURS, THE LONGITUDINAL JOINT WILL NOT BE SAWED WITH SEPERATE LANE POURS.
- 555.555 PROPOSED SURFACE ELEVATION



PLOT DATE = 3/20/2008
 FILE NAME = H:\4420\70161\int.Gar-7.dgn

REVISIONS	
NAME	DATE

ILLINOIS DEPARTMENT OF TRANSPORTATION

**INTERSECTION DETAIL
GARFIELD STREET**

SCALE AS SHOWN DRAWN BY EDW
 DATE MARCH 20, 2008 CHECKED BY RGH

H. M. & G. NO. 4420