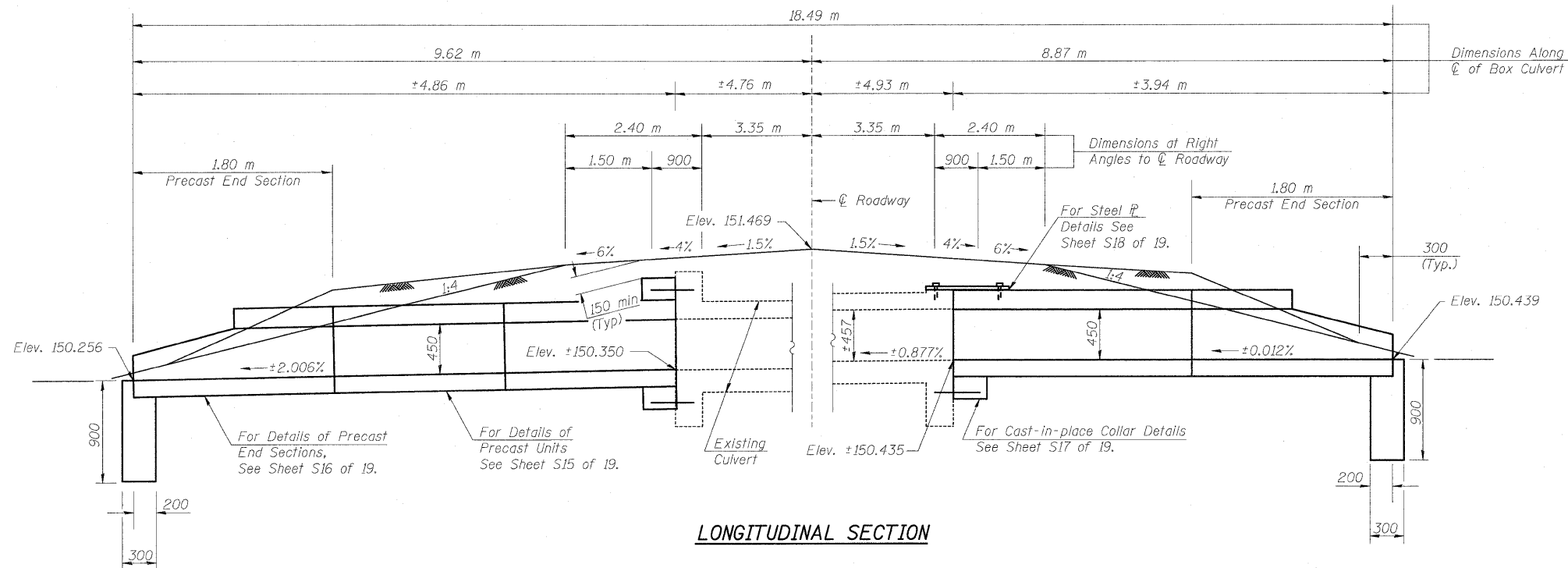
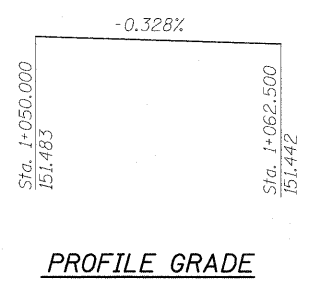


CONTRACT NO.				
F.A.P. RTE.	SECTION	COUNTY	TOTAL SHEETS	SHEET NO.
781	1YRS, 2ZRS-1	CRAWFORD	378	183
STA.		TO STA.		
FED. ROAD DIST. NO.		ILLINOIS	FED. AID PROJECT	

Existing Structure: The structure is a single barrel 914 mm x 457 mm box culvert at a skew of 0°52'01" right forward. The culvert has an overall length of 9.69 m. The contractor shall extend the culvert on each end for the dimensions shown.



**LONGITUDINAL SECTION**

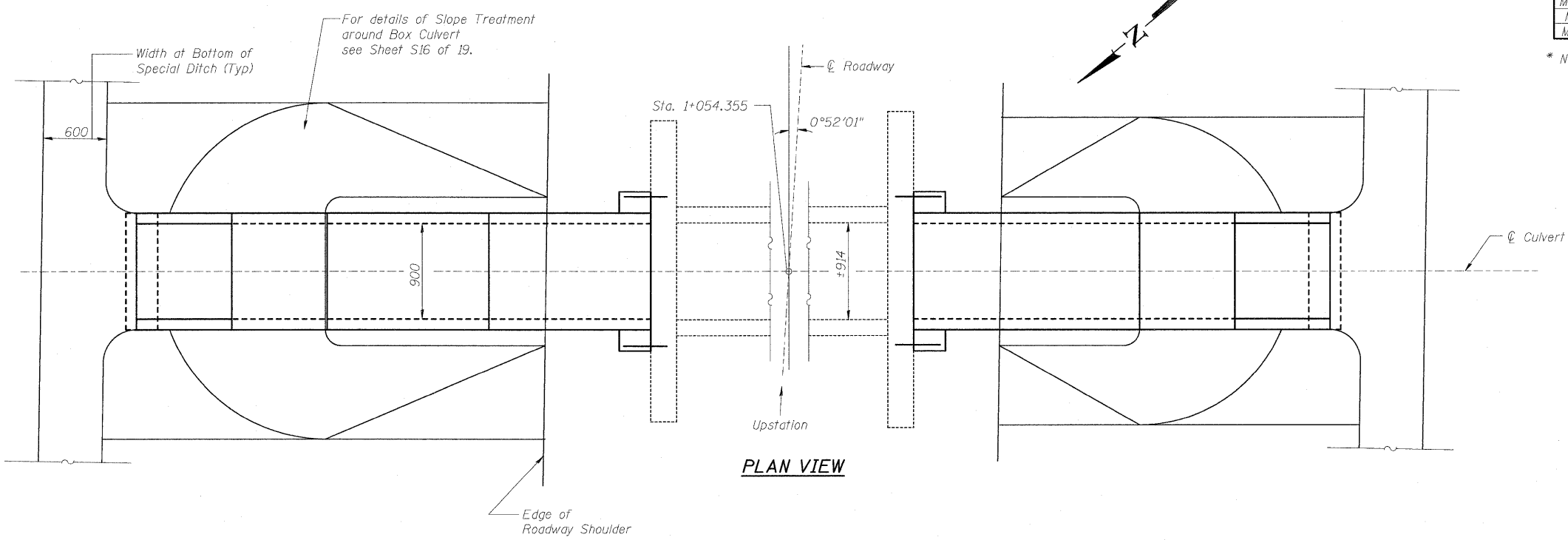


**PROFILE GRADE**

**BILL OF MATERIAL - BOX CULVERT NO. 1**

Item	Unit	Total
M5030350 Concrete Structures	cu. m.	0.5
M5080205 Reinforcement Bars, Epoxy Coated	kg	90
Precast Concrete Box Culvert (900x450)	m	5.2
* 5401001 Box Culvert End Section, Culvert No. 1	Each	2
M5403220 Expansion Bolts (M20x250)	Each	21
M2810707 Stone Riprap, Class A4	sq. m.	See Plans
M5050405 Furnishing & Erecting Structural Steel	kg	130

\* Non-standard size.



**PLAN VIEW**

PLOT DATE = 3/20/2008  
FILE NAME = H:\4420\44205 (Lin Eng)\design files 12-18-2006\5-02.dgn

REVISIONS		ILLINOIS DEPARTMENT OF TRANSPORTATION BOX CULVERT EXTENSIONS GENERAL PLAN & ELEVATION BOX CULV. NO. 1, STA. 1+054.355
NAME	DATE	
		SCALE NONE DATE DECEMBER 10, 2006 DRAWN BY MLB CHECKED BY MTH