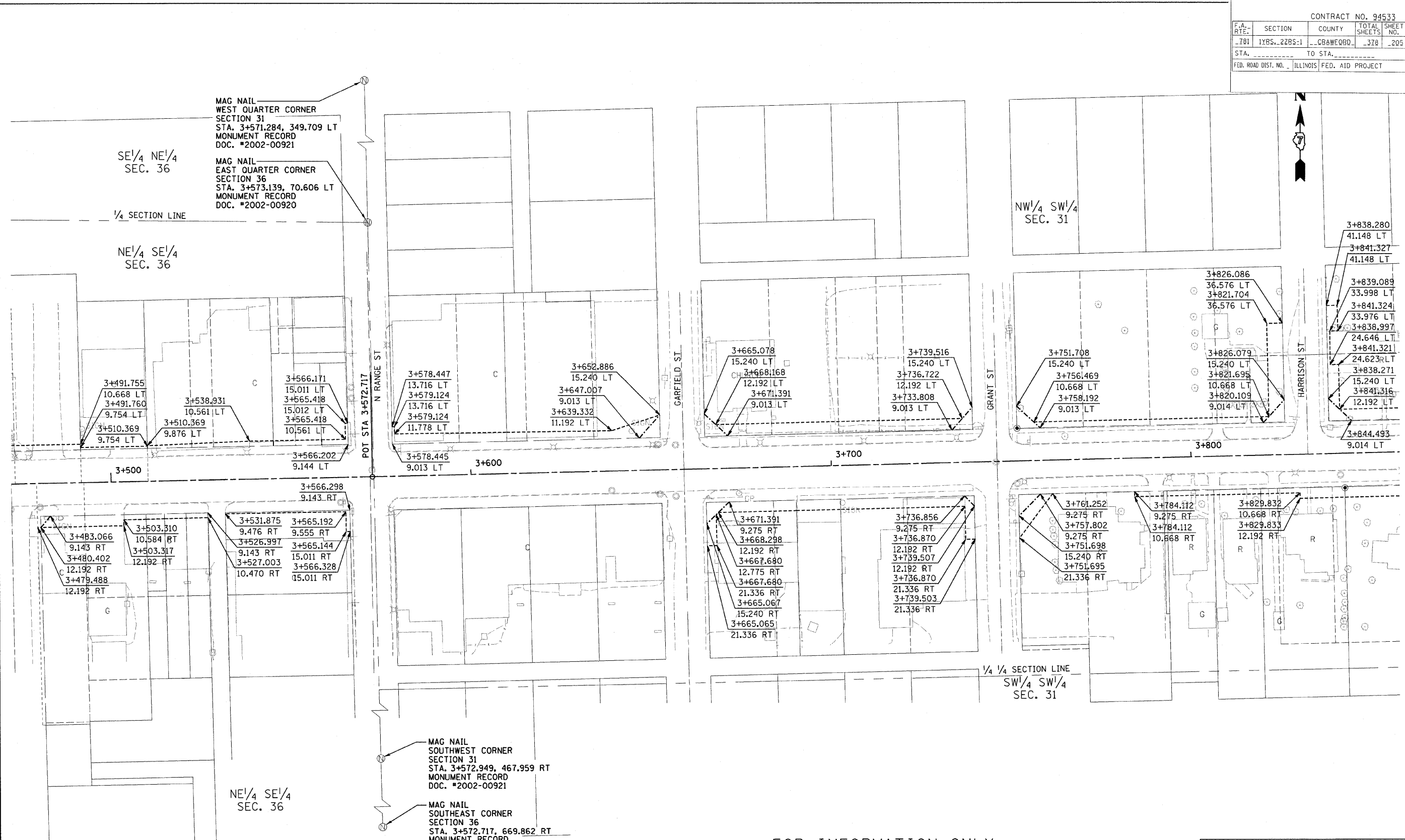


CONTRACT NO. 94533				
F.A. RTE.:	SECTION	COUNTY	TOTAL SHEETS	SHEET NO.
781	1YRS., 2ZRS-1	CRAWFORD	378	205
STA. _____ TO STA. _____		FED. ROAD DIST. NO. _____ ILLINOIS FED. AID PROJECT		



FOR INFORMATION ONLY

THESE METRIC RIGHT-OF-WAY PLANS ARE FOR INFORMATION ONLY. THEY WERE DEVELOPED FROM THE OFFICIAL ENGLISH VERSION OF THE RIGHT-OF-WAY PLANS. STATIONING AND DIMENSIONS CONVERTED TO METRIC. FINAL RIGHT-OF-WAY SHALL BE DETERMINED BY THE ORIGINAL ENGLISH PLANS.

RIGHT OF WAY PLANS  
FAP ROUTE 781

PROJECT SECTION 1YRS, 2ZRS-1

STATION 3+475 TO STATION 3+855

COUNTY CRAWFORD

SCALE 1:500 SHEET 5 OF 22