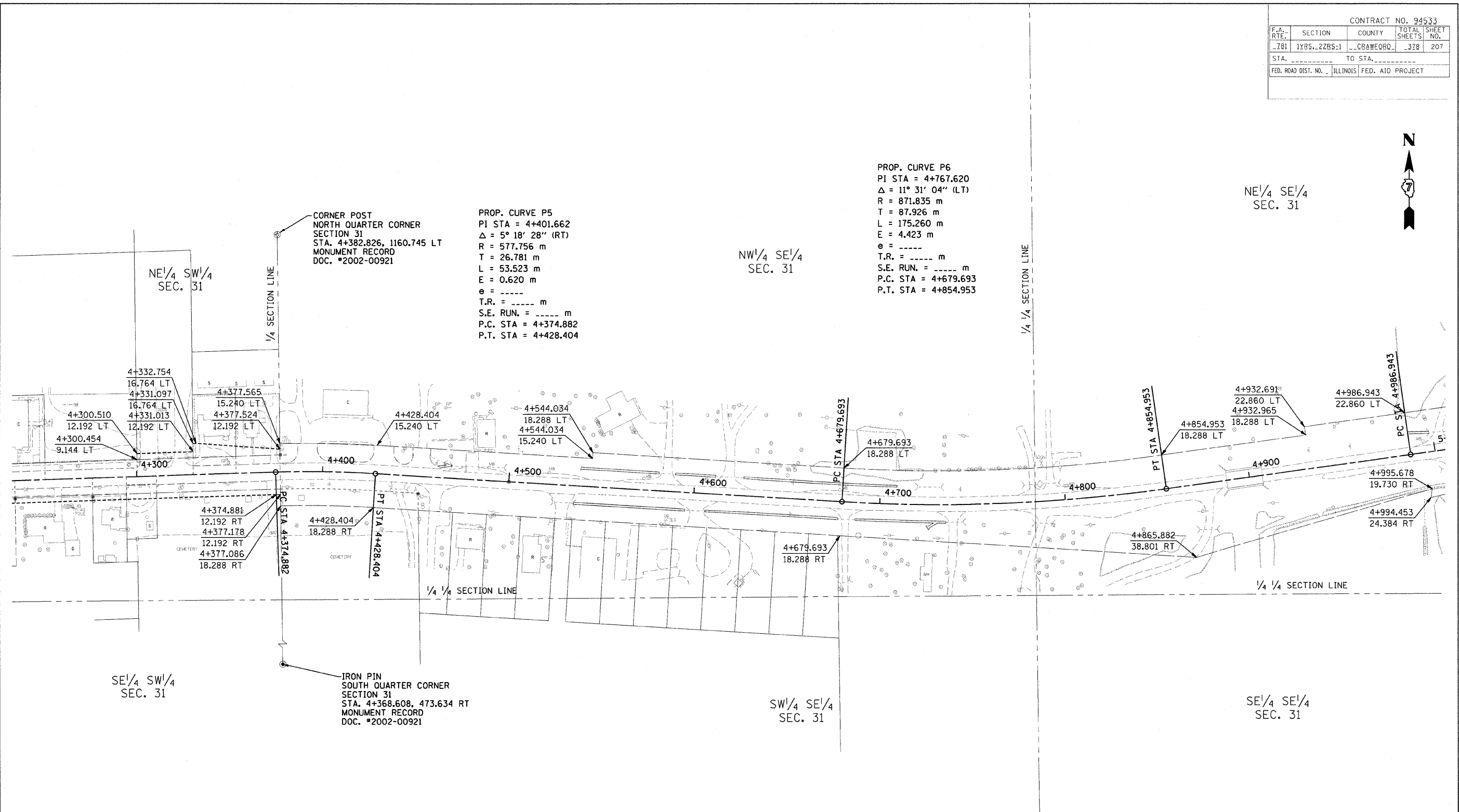


CONTRACT NO. 94533				
F.A. RTE.	SECTION	COUNTY	TOTAL SHEETS	SHEET NO.
781	1YRS-2ZRS-1	CRAWFORD	378	207
STA.	TO STA.			
FED. ROAD DIST. NO.	ILLINOIS FED. AID PROJECT			



PROP. CURVE P5
 PI STA = 4+401.662
 $\Delta = 5^\circ 18' 28''$ (RT)
 R = 577.756 m
 T = 26.781 m
 L = 53.523 m
 E = 0.620 m
 $e = \text{-----}$
 T.R. = ----- m
 S.E. RUN. = ----- m
 P.C. STA = 4+374.882
 P.T. STA = 4+428.404

PROP. CURVE P6
 PI STA = 4+767.620
 $\Delta = 11^\circ 31' 04''$ (LT)
 R = 871.835 m
 T = 87.926 m
 L = 175.260 m
 E = 4.423 m
 $e = \text{-----}$
 T.R. = ----- m
 S.E. RUN. = ----- m
 P.C. STA = 4+679.693
 P.T. STA = 4+854.953

FOR INFORMATION ONLY

THESE METRIC RIGHT-OF-WAY PLANS ARE FOR INFORMATION ONLY. THEY WERE DEVELOPED FROM THE OFFICIAL ENGLISH VERSION OF THE RIGHT-OF-WAY PLANS. STATIONING AND DIMENSIONS CONVERTED TO METRIC. FINAL RIGHT-OF-WAY SHALL BE DETERMINED BY THE ORIGINAL ENGLISH PLANS.

CONTRACT NO. 94533

RIGHT OF WAY PLANS	
FAP ROUTE 781	
PROJECT	SECTION 1YRS, 2ZRS-1
STATION 4+235	TO
STATION 5+000	
COUNTY CRAWFORD	
SCALE 1:1000	SHEET 7 OF 22