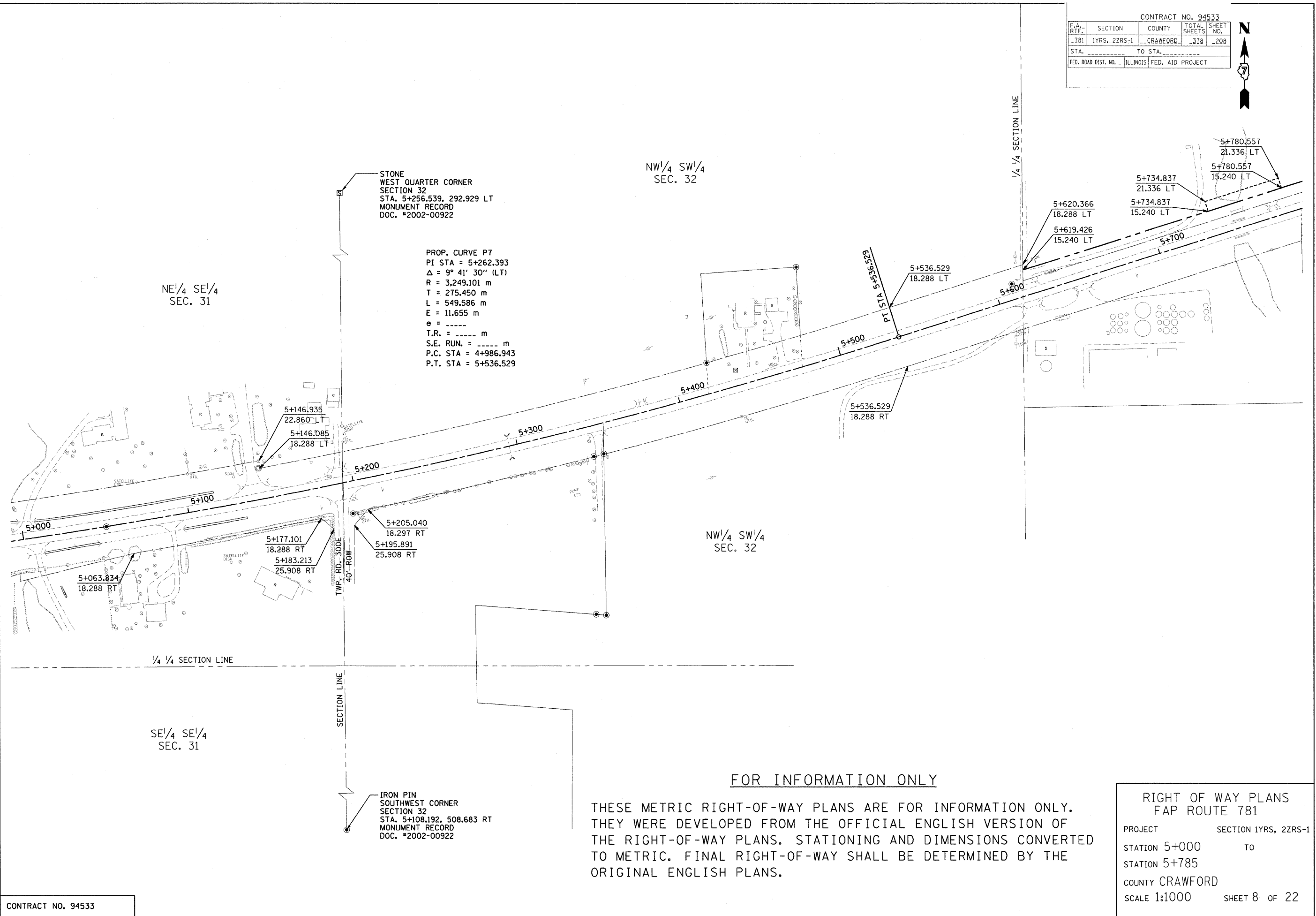


CONTRACT NO. 94533				
F.A. RTE.	SECTION	COUNTY	TOTAL SHEETS	SHEET NO.
781	1YRS., 2ZRS-1	CRAWFORD	208	208
STA. _____ TO STA. _____				
FED. ROAD DIST. NO. _____ ILLINOIS FED. AID PROJECT				



STONE  
WEST QUARTER CORNER  
SECTION 32  
STA. 5+256.539, 292.929 LT  
MONUMENT RECORD  
DOC. #2002-00922

PROP. CURVE P7  
PI STA = 5+262.393  
 $\Delta = 9^\circ 41' 30''$  (LT)  
R = 3,249.101 m  
T = 275.450 m  
L = 549.586 m  
E = 11.655 m  
e = -----  
T.R. = ----- m  
S.E. RUN. = ----- m  
P.C. STA = 4+986.943  
P.T. STA = 5+536.529

NE 1/4 SE 1/4  
SEC. 31

NW 1/4 SW 1/4  
SEC. 32

NW 1/4 SW 1/4  
SEC. 32

SE 1/4 SE 1/4  
SEC. 31

IRON PIN  
SOUTHWEST CORNER  
SECTION 32  
STA. 5+108.192, 508.683 RT  
MONUMENT RECORD  
DOC. #2002-00922

**FOR INFORMATION ONLY**

THESE METRIC RIGHT-OF-WAY PLANS ARE FOR INFORMATION ONLY. THEY WERE DEVELOPED FROM THE OFFICIAL ENGLISH VERSION OF THE RIGHT-OF-WAY PLANS. STATIONING AND DIMENSIONS CONVERTED TO METRIC. FINAL RIGHT-OF-WAY SHALL BE DETERMINED BY THE ORIGINAL ENGLISH PLANS.

RIGHT OF WAY PLANS FAP ROUTE 781	
PROJECT	SECTION 1YRS., 2ZRS-1
STATION 5+000	TO
STATION 5+785	
COUNTY CRAWFORD	
SCALE 1:1000	SHEET 8 OF 22