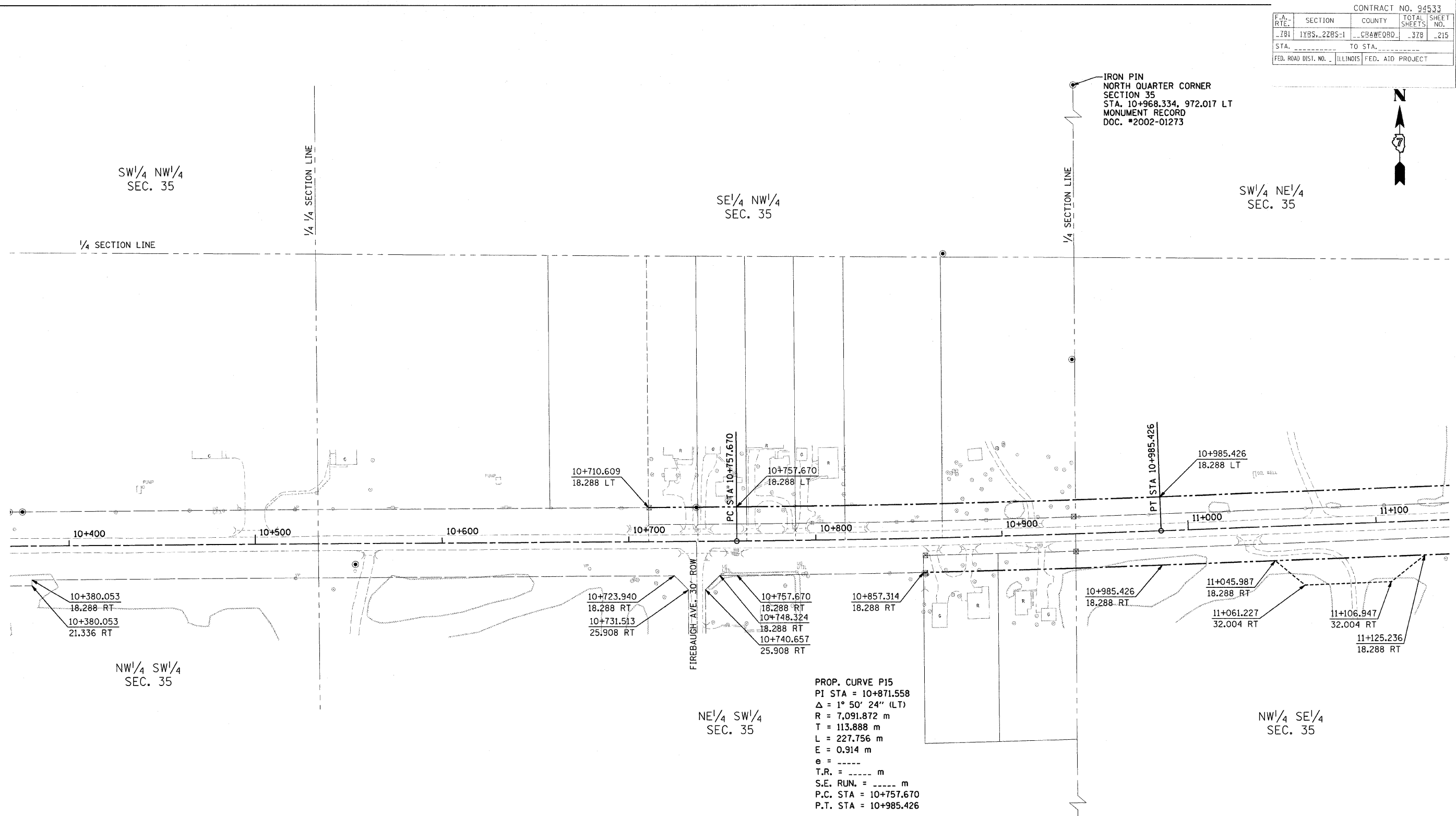


F.A. RTE.	SECTION	COUNTY	TOTAL SHEETS	SHEET NO.
781	1YRS, 2ZRS-1	CRAWFORD	378	215
STA. _____ TO STA. _____		FED. ROAD DIST. NO. _____ ILLINOIS FED. AID PROJECT		



PROP. CURVE P15  
 PI STA = 10+871.558  
 $\Delta = 1^\circ 50' 24''$  (LT)  
 R = 7,091.872 m  
 T = 113.888 m  
 L = 227.756 m  
 E = 0.914 m  
 e = -----  
 T.R. = ----- m  
 S.E. RUN. = ----- m  
 P.C. STA = 10+757.670  
 P.T. STA = 10+985.426

**FOR INFORMATION ONLY**

THESE METRIC RIGHT-OF-WAY PLANS ARE FOR INFORMATION ONLY. THEY WERE DEVELOPED FROM THE OFFICIAL ENGLISH VERSION OF THE RIGHT-OF-WAY PLANS. STATIONING AND DIMENSIONS CONVERTED TO METRIC. FINAL RIGHT-OF-WAY SHALL BE DETERMINED BY THE ORIGINAL ENGLISH PLANS.

IRON PIN  
 SOUTH QUARTER CORNER  
 SECTION 35  
 STA. 10+924.269, 659.710 RT  
 MONUMENT RECORD  
 DOC. \*2002-01273

**RIGHT OF WAY PLANS**  
**FAP ROUTE 781**

PROJECT SECTION 1YRS, 2ZRS-1  
 STATION 10+375 TO STATION 11+135  
 COUNTY CRAWFORD  
 SCALE 1:1000 SHEET 15 OF 22