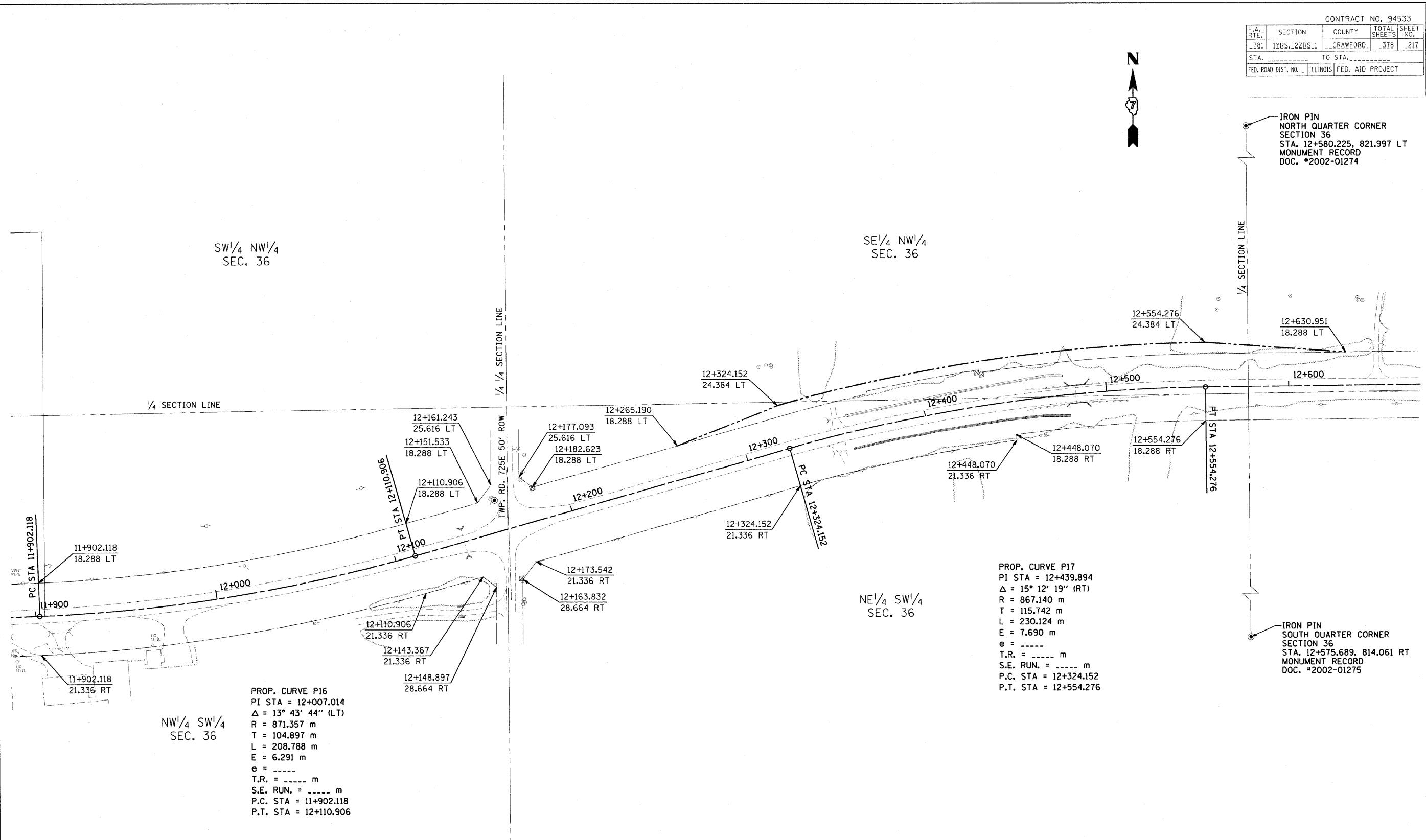


CONTRACT NO. 94533				
F.A. RYE:	SECTION	COUNTY	TOTAL SHEETS	SHEET NO.
781	1YRS. 2ZRS-1	CRAWFORD	328	217
STA. _____		TO STA. _____		
FED. ROAD DIST. NO.	ILLINOIS	FED. AID PROJECT		



PROP. CURVE P16  
 PI STA = 12+007.014  
 $\Delta = 13^\circ 43' 44''$  (LT)  
 R = 871.357 m  
 T = 104.897 m  
 L = 208.788 m  
 E = 6.291 m  
 e = -----  
 T.R. = ----- m  
 S.E. RUN. = ----- m  
 P.C. STA = 11+902.118  
 P.T. STA = 12+110.906

PROP. CURVE P17  
 PI STA = 12+439.894  
 $\Delta = 15^\circ 12' 19''$  (RT)  
 R = 867.140 m  
 T = 115.742 m  
 L = 230.124 m  
 E = 7.690 m  
 e = -----  
 T.R. = ----- m  
 S.E. RUN. = ----- m  
 P.C. STA = 12+324.152  
 P.T. STA = 12+554.276

**FOR INFORMATION ONLY**

THESE METRIC RIGHT-OF-WAY PLANS ARE FOR INFORMATION ONLY. THEY WERE DEVELOPED FROM THE OFFICIAL ENGLISH VERSION OF THE RIGHT-OF-WAY PLANS. STATIONING AND DIMENSIONS CONVERTED TO METRIC. FINAL RIGHT-OF-WAY SHALL BE DETERMINED BY THE ORIGINAL ENGLISH PLANS.

**RIGHT OF WAY PLANS**  
**FAP ROUTE 781**

PROJECT SECTION 1YRS, 2ZRS-1

STATION 11+895 TO STATION 12+670

COUNTY CRAWFORD

SCALE 1:1000 SHEET 17 OF 22