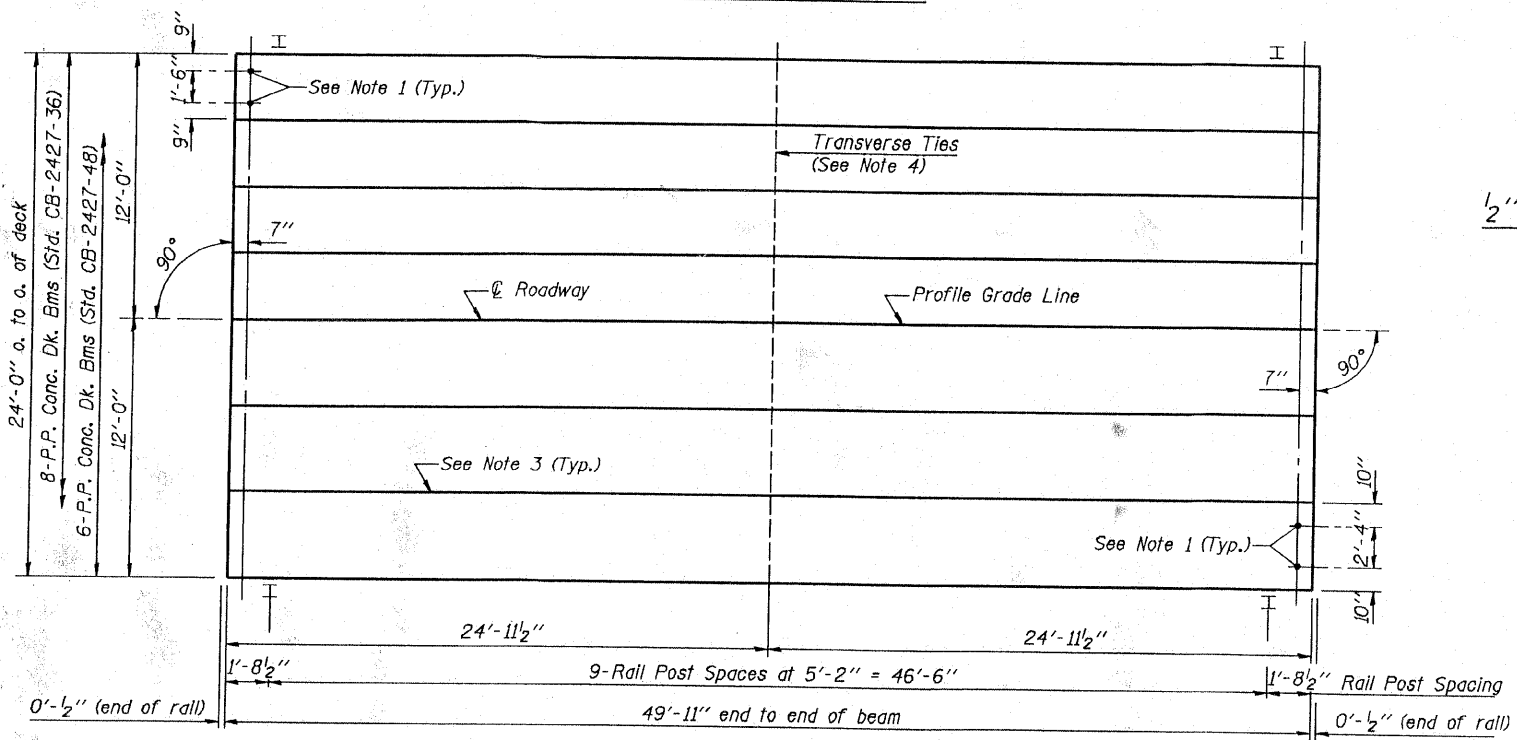


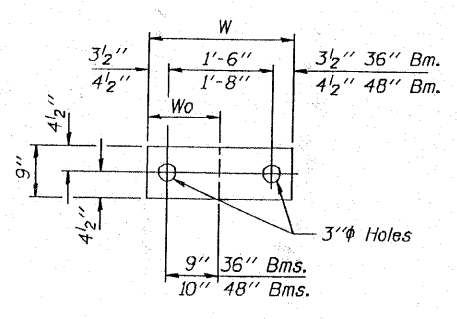
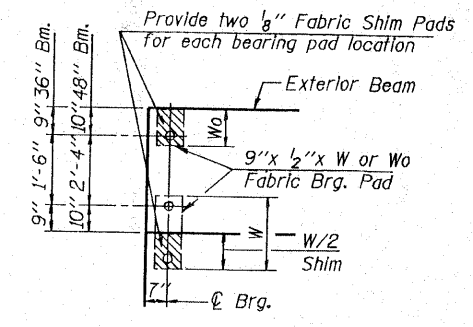
TYPICAL ELEVATIONS



PLAN

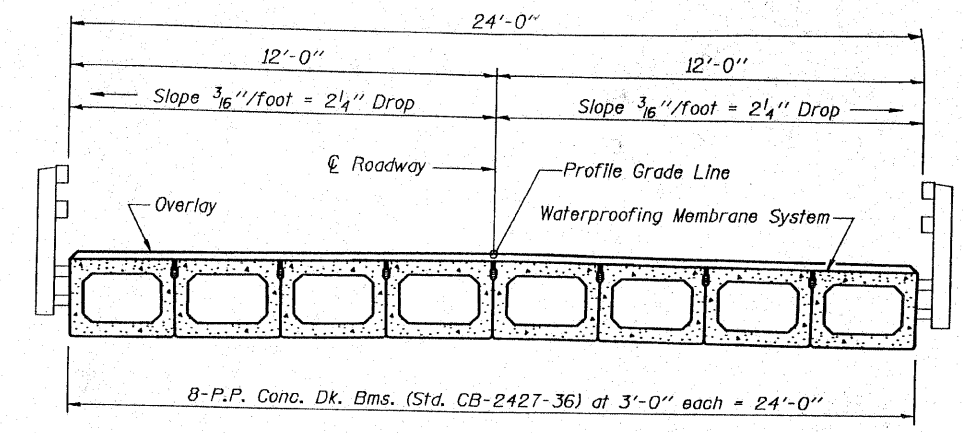
NOTES

1. After beams have been erected, holes shall be drilled into substructure and anchor dowels placed. Dowel holes shall be filled with non-shrink grout to top of beam and allowed to cure min. 24 hrs. prior to grouting the shear keys.
2. Nominal 1" joint at centerline pier shall be filled with non-shrink grout.
3. Longitudinal keys shall be grouted.
4. The 1" diameter rods in the transverse tie assembly shall be tightened to a snug fit and the threads set. Pockets that receive transverse tie bar outside shall be filled with grout after transverse tie assembly is in place.

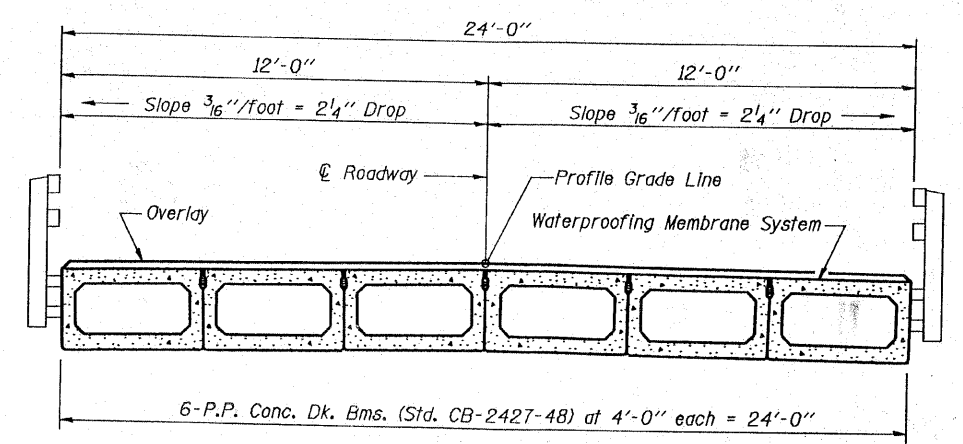


Beam	W	Wo
36"	2'-1"	1'-0 1/2"
48"	2'-5"	1'-2 1/2"

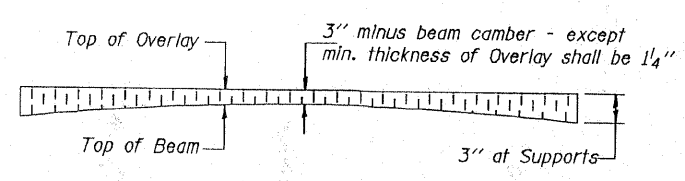
1/2" FABRIC BRG. PAD DETAILS



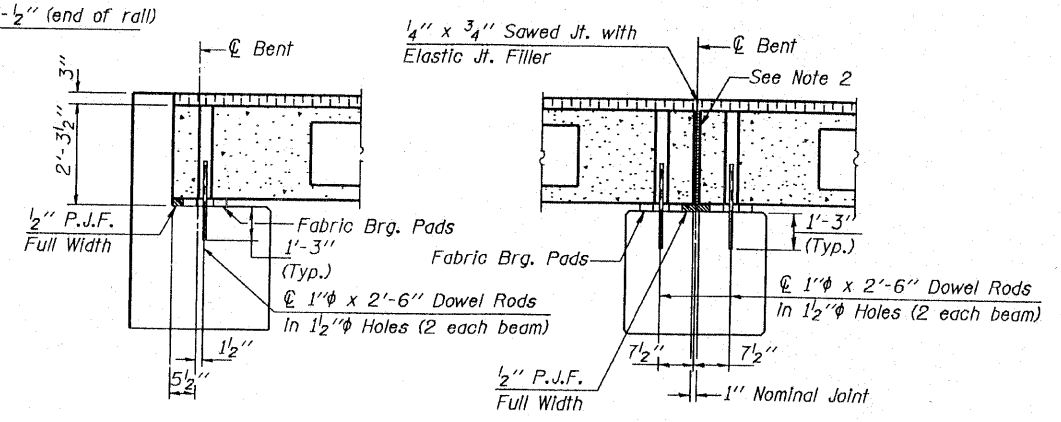
CROSS SECTION



CROSS SECTION



PROFILE OF OVERLAY



SECTION AT ABUTS.
(Along centerline Beams)

SECTION AT PIERS
(Along centerline Beams)

QUANTITIES FOR ONE SPAN

P.P. Conc. Dk. Bm. 27" Dp.	1200 Sq. Ft.
Steel Railing	100 Ft.
Waterproofing Membrane System	133.3 Sq. Yds.
Portland Cement Mortar	350 Ft. 3C'
Fairing Course	258 Ft. 48'

Note: Quantity of overlay for one span = 18.8 Tons

P.P.C. DECK BEAM
SUPERSTRUCTURE

24' RDWY.	27" BMS.	50' SPAN	0° SKEW
STANDARD CS-2427-50			

Illinois Department of Transportation

PASSED APRIL 4, 2005
 Thomas S. Ramagala
 Engineer of Bridge Design

APPROVED APRIL 4, 2005
 Ralph E. Anderson
 Engineer of Bridges and Structures

ISSUED 1-1-89