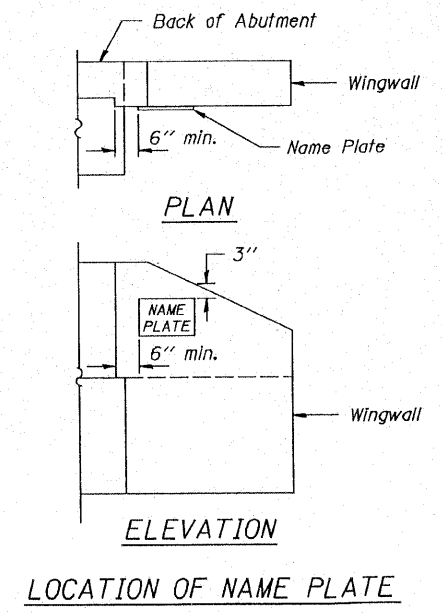


Material: Best quality brass or bronze.
 Border & Lettering: Raised $\frac{1}{8}$ inch. Square cut and not tapered. Top surface polished.
 Fastenings: Four lugs at least three inches long, cast on back of plate.



Illinois Department of Transportation	
PASSED APRIL 4, 2005 <i>Thomas J. Magallon</i> Engineer of Bridge Design	ISSUED 7-1-995
APPROVED APRIL 4, 2005 <i>Ralph E. Anderson</i> Engineer of Bridges and Structures	

NAME PLATE
STANDARD CN