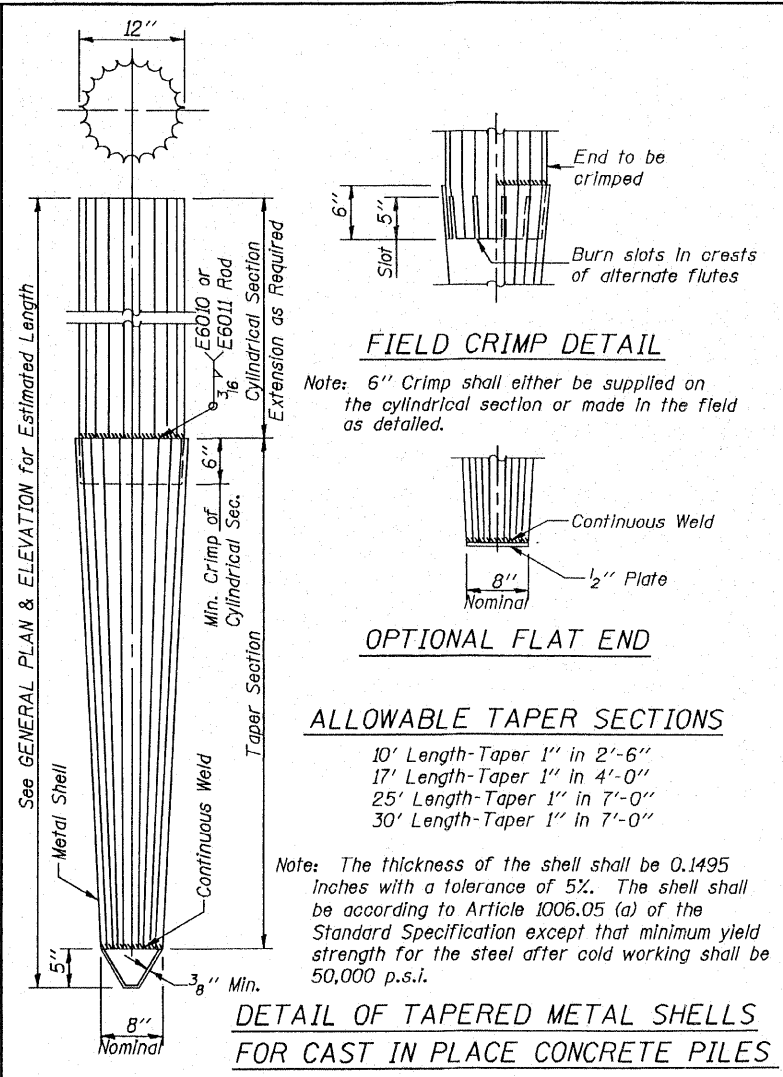
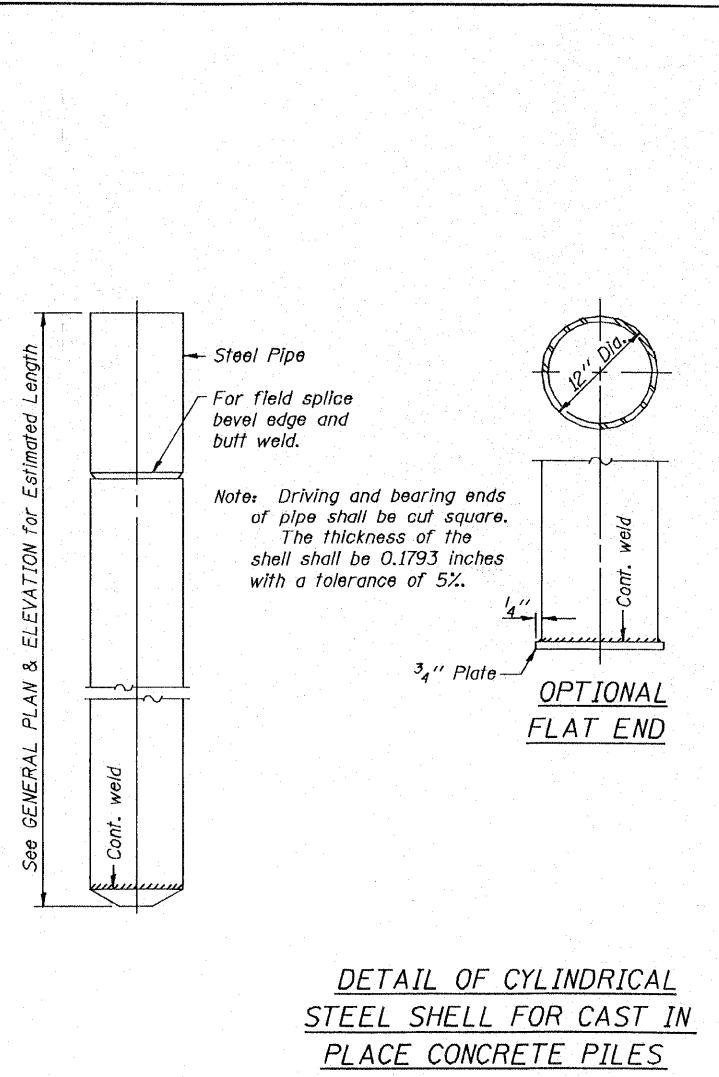


Handling: For Pile lengths up to 45' use two slings placed at a distance of 0.21L from each end. For Piles longer than 45', use three slings placed at a distance of 0.12L from each end and at mid point of pile.

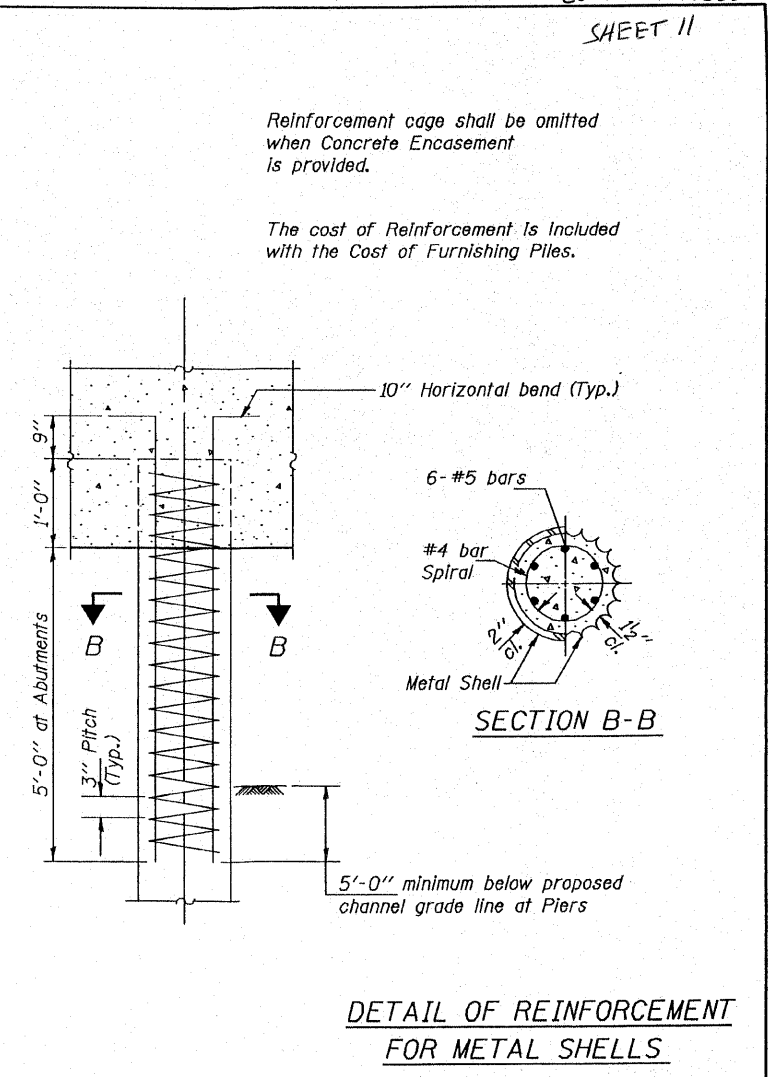
DETAIL OF PRECAST CONCRETE PILES



DETAIL OF TAPERED METAL SHELLS FOR CAST IN PLACE CONCRETE PILES



DETAIL OF CYLINDRICAL STEEL SHELL FOR CAST IN PLACE CONCRETE PILES



DETAIL OF REINFORCEMENT FOR METAL SHELLS

Illinois Department of Transportation

PASSED FEBRUARY 1, 2000

Theresa J. Demasak

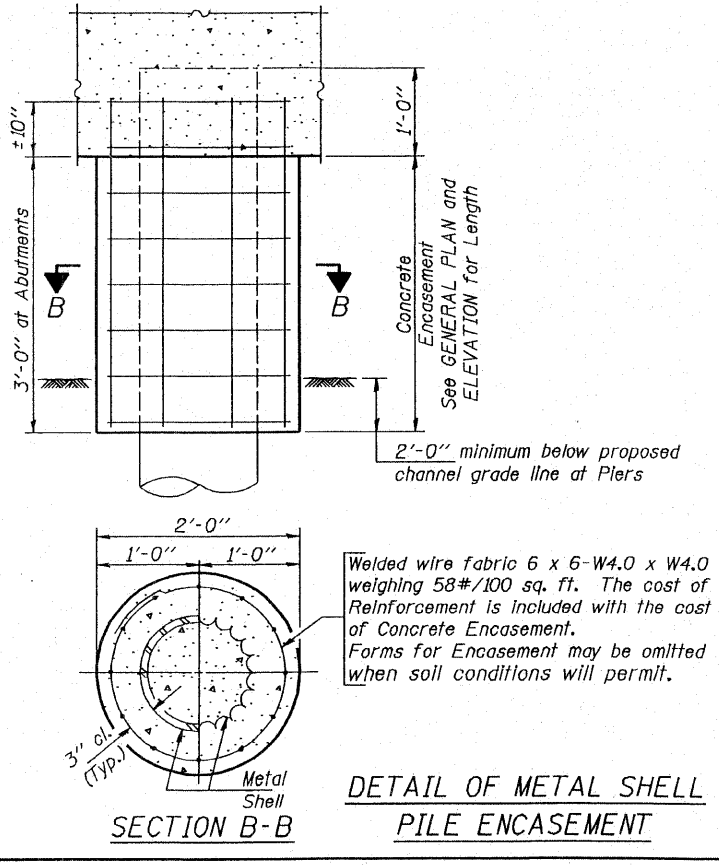
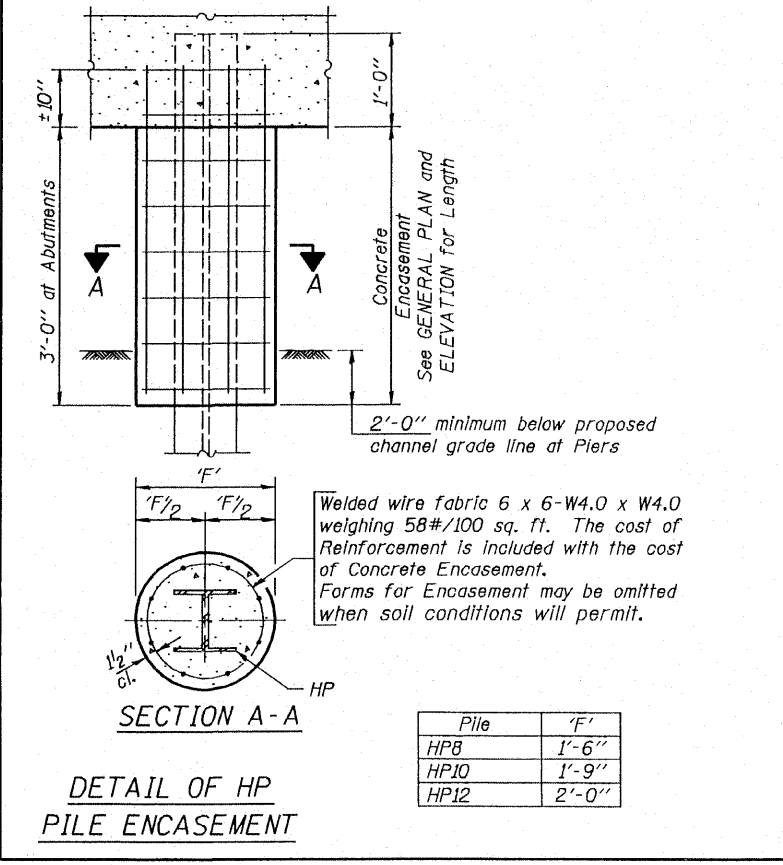
Engineer of Bridge Design

APPROVED FEBRUARY 1, 2000

Ralph E. Anderson

Engineer of Bridges and Structures

186-H-GENSIS



QUANTITIES/FT. OF ENCASEMENT (STEEL PILES)

| Pile Size | Item | Quantity |
|-----------|---------------------|------------|
| HP8 | Concrete Encasement | 0.063 C.Y. |
| HP10 | Concrete Encasement | 0.086 C.Y. |
| HP12 | Concrete Encasement | 0.112 C.Y. |

(METAL SHELL PILES)

| Pile Size | Item | Quantity |
|-----------|---------------------|------------|
| 12" Dia. | Concrete Encasement | 0.087 C.Y. |

PILE DETAILS

STANDARD CX-1