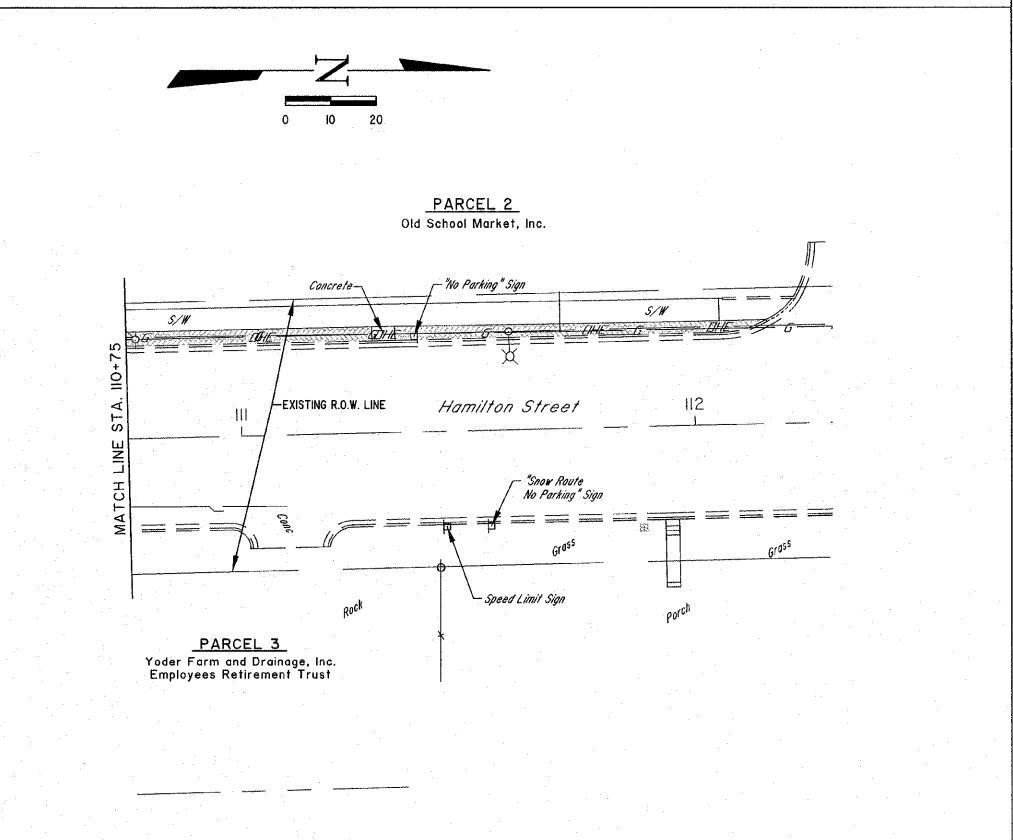
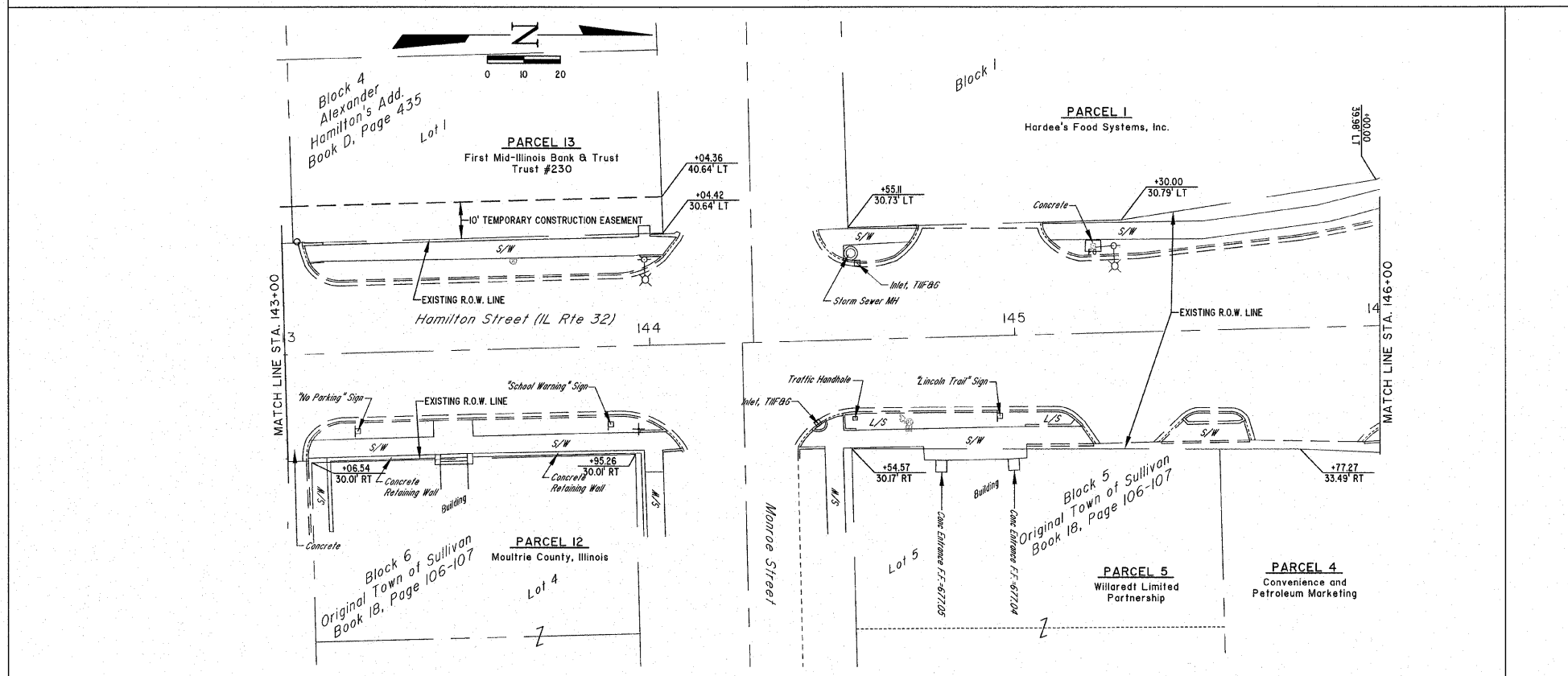
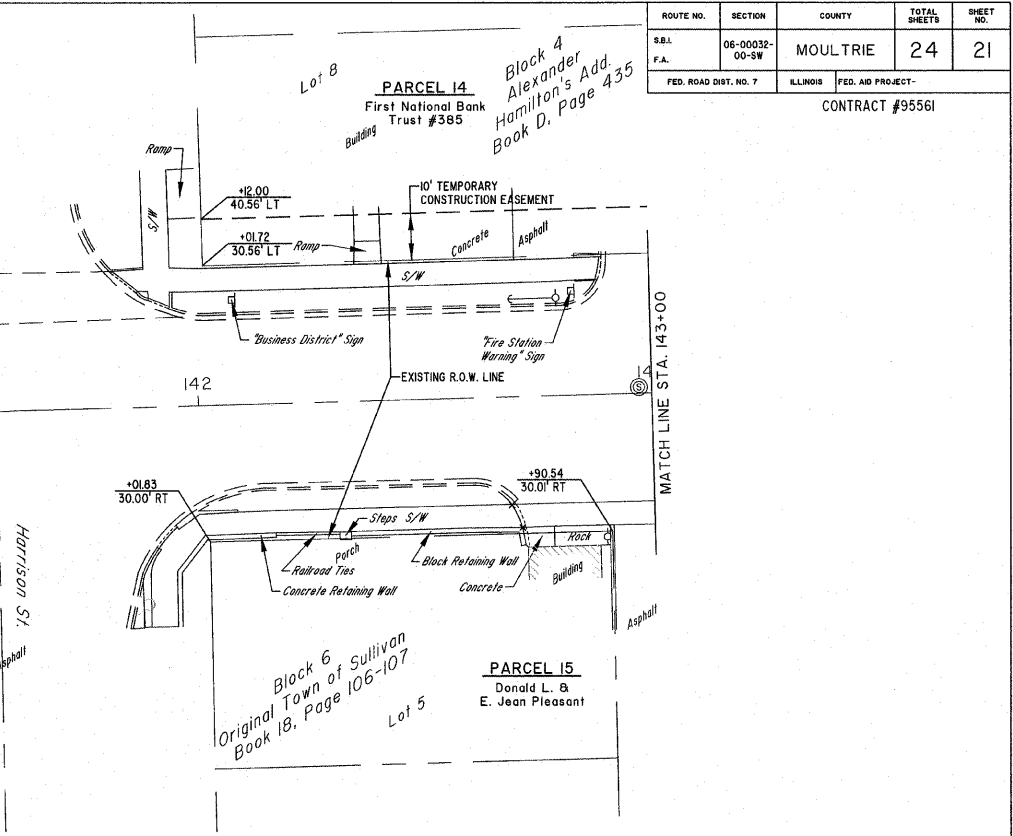
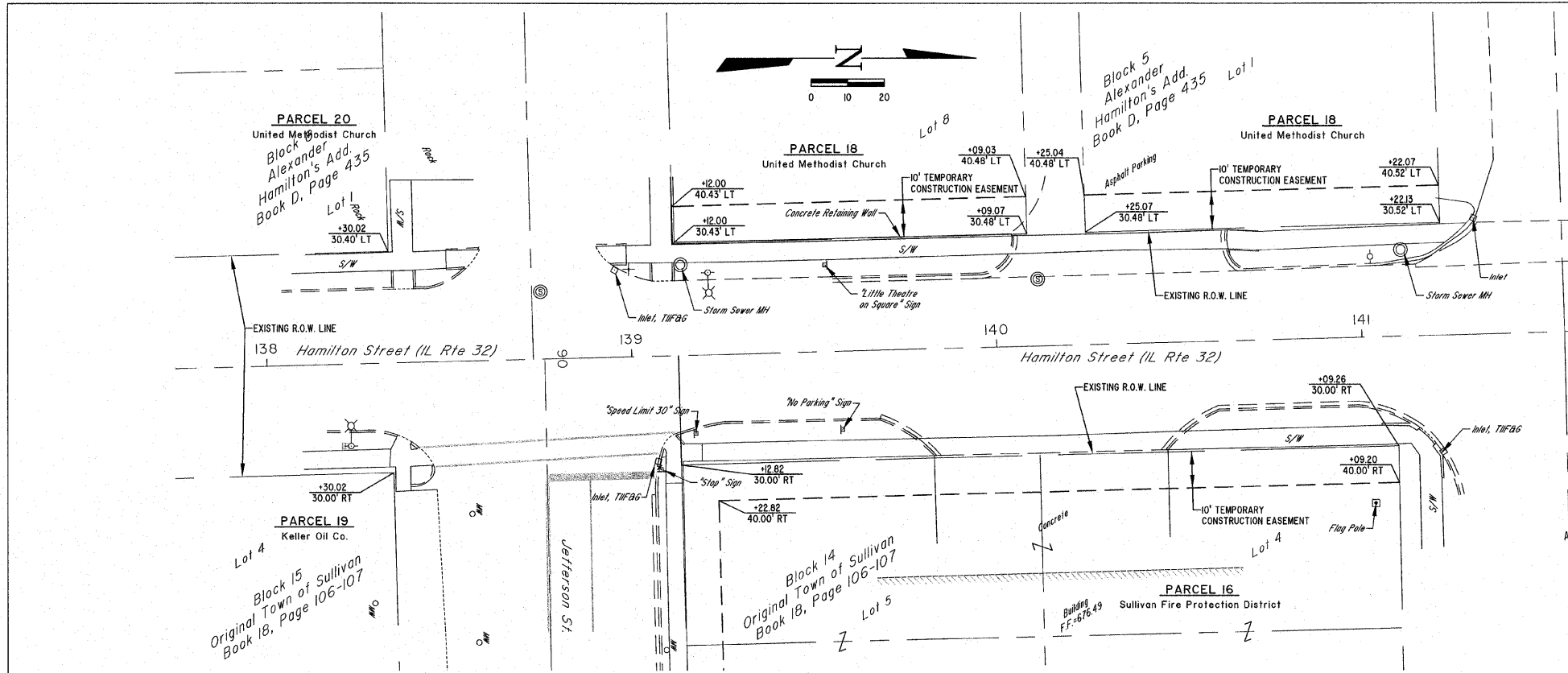


ROUTE NO.	SECTION	COUNTY	TOTAL SHEETS	SHEET NO.
S.B.I.	06-00032-00-SW	MOULTRIE	24	21
FED. ROAD DIST. NO. 7	ILLINOIS	FED. AID PROJECT-	CONTRACT #95561	



MILANO & GRUNLOH ENGINEERS, LLC
 14 WEST WASHINGTON
 P.O. BOX 697
 EFFINGHAM, ILLINOIS 62408
 Phone: (217) 347-7282
 Fax: (800) 677-2714
 (217) 342-3433
 Web Address: www.mgengineers.com
 Design Firm #: 184-00308

RIGHT-OF-WAY PLAN
 HAMILTON STREET (ILL RTE 32)
 SIDEWALK ENHANCEMENT
 CITY OF SULLIVAN
 MOULTRIE CO., ILLINOIS

File name: S:\DWG\06\06244\dwg\ROW Plans.dwg
 Plot date: 06/23/08 at 10:45 F8.820