

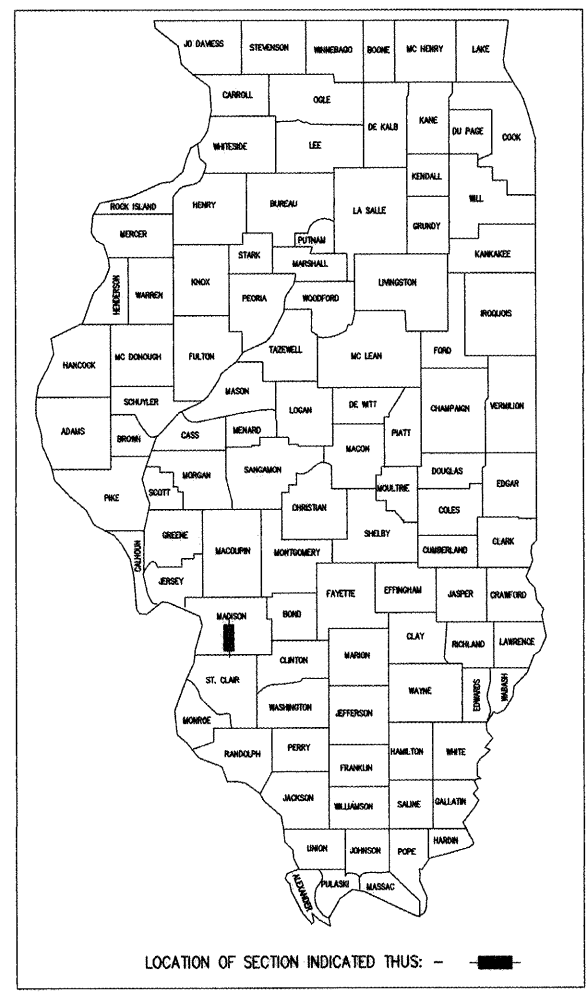
ROUTE NO	SECTION	COUNTY	SHEET NO.	TOTAL SHEETS
F.A.P. 793	05-00025-00-TL	MADISON	1	127
F.A.U. 9393	07-00025-01-WR			
FEDERAL AID PROJECT				
CONTRACT NO. 97352				

INDEX OF SHEETS

SHEET NO.	DESCRIPTION
1.	COVER SHEET
2.	GENERAL NOTES
3-4.	SUMMARY OF QUANTITIES
5-8.	SCHEDULE OF QUANTITIES
9-19.	TYPICAL SECTIONS
20-30.	PLAN AND PROFILE SHEETS
31-39.	TEMPORARY EROSION CONTROL PLAN
40-50.	DRAINAGE SHEETS
51-61.	RIGHT-OF-WAY PLAN
62-70.	PAVEMENT MARKING AND SIGNING PLAN
71-73.	TRAFFIC SIGNAL PLAN
74-76.	INTERSECTION DETAILS
77-85.	SPECIAL DETAILS
86-99.	CROSS SECTIONS (US 40)
100-127.	CROSS SECTIONS (TROY-O'FALLON ROAD)

STATE OF ILLINOIS
DEPARTMENT OF TRANSPORTATION
DIVISION OF HIGHWAYS
**PLANS FOR PROPOSED
FEDERAL AID HIGHWAY**

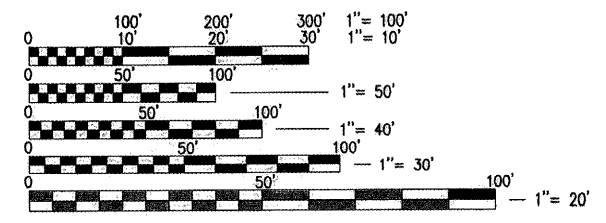
F.A.P. 793 (U.S. ROUTE 40)
F.A.U. 9393 (TROY-O'FALLON ROAD)
CITY OF TROY
MADISON COUNTY
SECTION 05-00025-00-TL
SECTION 07-00025-01-WR
PROJECT NO. CMM-5011(192)
JOB NO. C-98-302-06



STANDARDS

280001-04	604041-01	720001
420001-07	604086-01	720006-01
424001-05	604091-01	720016-01
442101-07	606001-03	780001-01
442201-03	606101-03	781001-02
482001-02	606201-01	805001
542101-01	701001-01	814001-01
542301-01	701006-02	814006-01
542401	701011-01	873001-01
602301-01	701201-02	877001-03
602306-01	701301-02	878001-06
602401-01	701306-01	880006
602601-01	701311-02	886001
602701-01	701326-02	886006
604006-03	701801-03	
604036-01	701901	

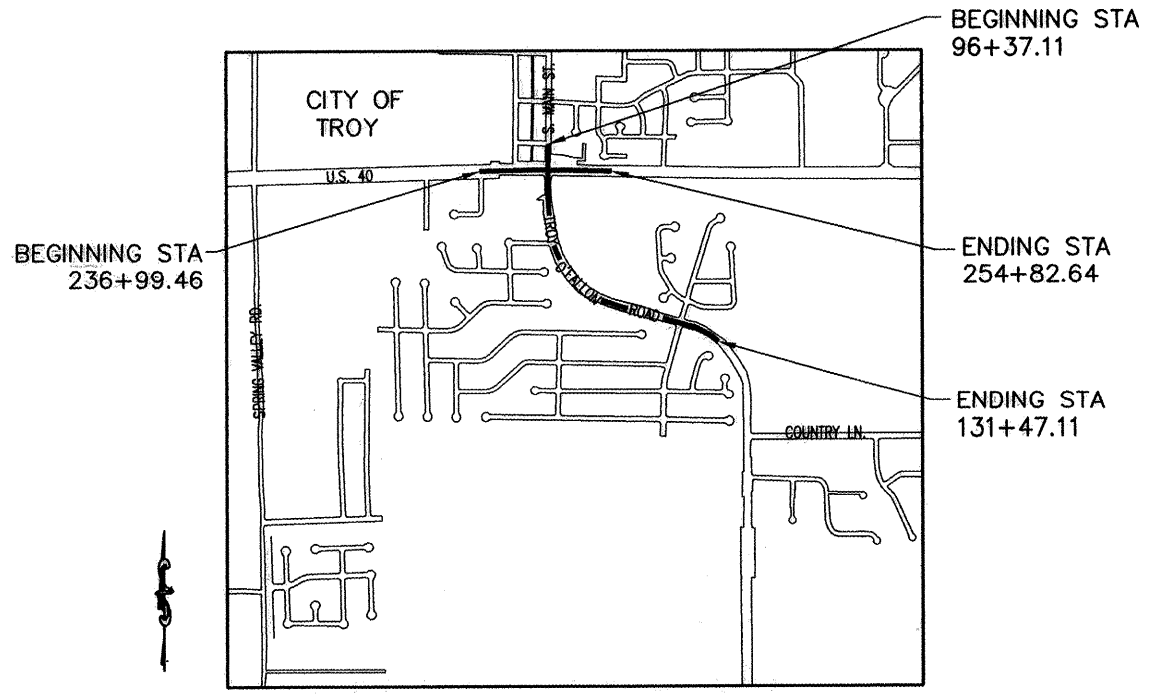
SCALES (PLAN 1"=20'
UNLESS PROFILE HORIZ. 1"=20'
OTHERWISE PROFILE VERT. 1"=5'
NOTED CROSS SECTIONS 1"=5' HORIZ.
1"=2' VERT.)



FULL SIZE PLANS HAVE BEEN PREPARED USING STANDARD ENGINEERING SCALES, REDUCED SIZED PLANS WILL NOT CONFORM TO STANDARD SCALES, IN MAKING MEASUREMENTS ON REDUCED PLANS, THE ABOVE SCALES MAY BE USED.

F.A.P. ROUTE 793 DESIGN DESIGNATION	F.A.U. ROUTE 9393 DESIGN DESIGNATION
ROADWAY CLASSIFICATION = PRINCIPLE ARTERIAL	ROADWAY CLASSIFICATION = MINOR ARTERIAL
DESIGN SPEED = 45 M.P.H.	DESIGN SPEED = 45 M.P.H.
CURRENT TRAFFIC (ADT) = 12,000	CURRENT TRAFFIC (ADT) = 11,500
DESIGN TRAFFIC (ADT) = 14,000	DESIGN TRAFFIC (ADT) = 13,300

J.U.L.I.E.
JOINT UTILITY LOCATION INFORMATION FOR EXCAVATION
1-800-892-0123



LOCATION MAP

GROSS LENGTH (US 40)= 1,783.18' (0.338 MILES)
GROSS LENGTH (SOUTH MAIN ST./TROY-O'FALLON RD.)= 3,510.00' (0.665 MILES)
TOTAL LENGTH= 5,293.18' (1.002 MILES)



APPROVED *[Signature]* 6/20/08
MAYOR OF TROY

PASSED *[Signature]* July 10 2008
DISTRICT 8 ENGINEER OF LOCAL ROADS

RELEASING FOR BID BASED ON LIMITED REVIEW *[Signature]* July 10 2008
MARY C. LAMIE, P.E.
DEPUTY DIRECTOR OF HIGHWAYS
REGION FIVE ENGINEER

STATE OF ILLINOIS
DEPARTMENT OF TRANSPORTATION

[Signature] 6/20/08
MATT J. KITZMILLER, P.E. NO. 062-059955 DATE
EXPIRES NOVEMBER 30, 2009



THOUVENOT, WADE & MOERCHEN, INC.

P:\050162\dwg\050162COVER.dwg 4/15/2008 3:15:35 PM CDT