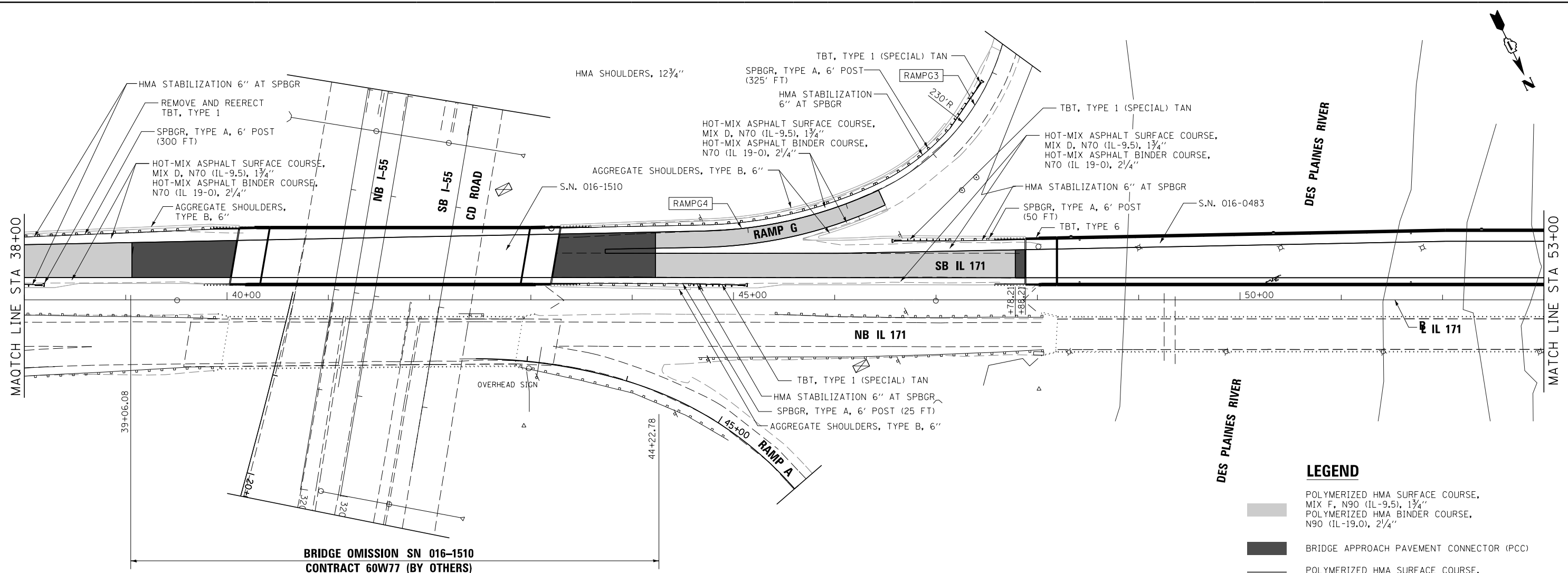


PLAN	SURVEYED	DATE
	PLOTTED	BY
	ALIGNED	
	CHECKED	
	FILED	
	NO.	

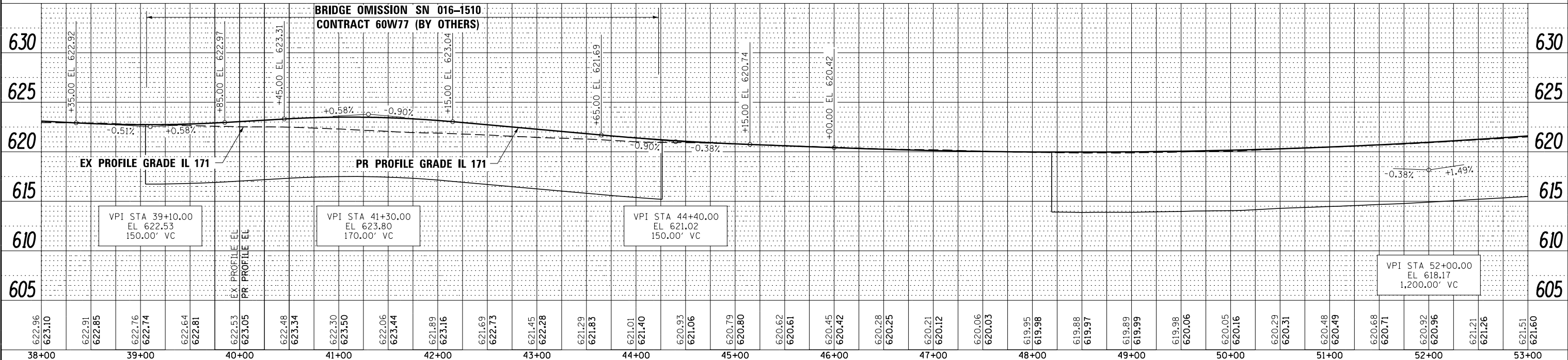
PROFILE	SURVEYED	DATE
	PLOTTED	BY
	GRADES CHECKED	
	STRUCTURE	
	NOTATIONS CHECKED	
	NO.	



**LEGEND**

- POLYMERIZED HMA SURFACE COURSE, MIX F, N90 (IL-9.5), 1 3/4"
- POLYMERIZED HMA BINDER COURSE, N90 (IL-19.0), 2 1/4"
- BRIDGE APPROACH PAVEMENT CONNECTOR (PCC)
- POLYMERIZED HMA SURFACE COURSE, MIX F, N90 (IL-9.5), 2"
- HMA BASE COURSE, 10 3/4"

NOTE: SHOULDER TAPER RATES SHOULD FOLLOW HIGHWAY STANDARD 630301 UNLESS OTHERWISE STATED ON THE PLANS.



FILE NAME -	DESIGNED - AAA	REVISED -		<b>STATE OF ILLINOIS</b> <b>DEPARTMENT OF TRANSPORTATION</b>		<b>ROADWAY PLAN &amp; PROFILE</b> <b>IL 171</b>		F.A.P. R.T.E.	SECTION	COUNTY	TOTAL SHEETS	SHEET NO.
...\\D162J16-shr-IL171-pln-SB-04.dgn	DRAWN - TMB	REVISED -						372/373	2013-038B-R	COOK	821	52
USER NAME = tblank	CHECKED - JMM	REVISED -						CONTRACT NO. 60J16				
PLOT DATE = 8/7/2014	DATE - 6/23/2014	REVISED -						ILLINOIS FED. AID PROJECT				