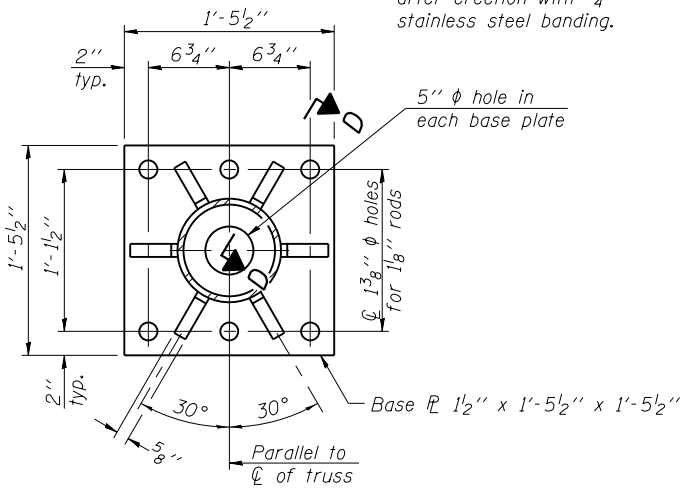
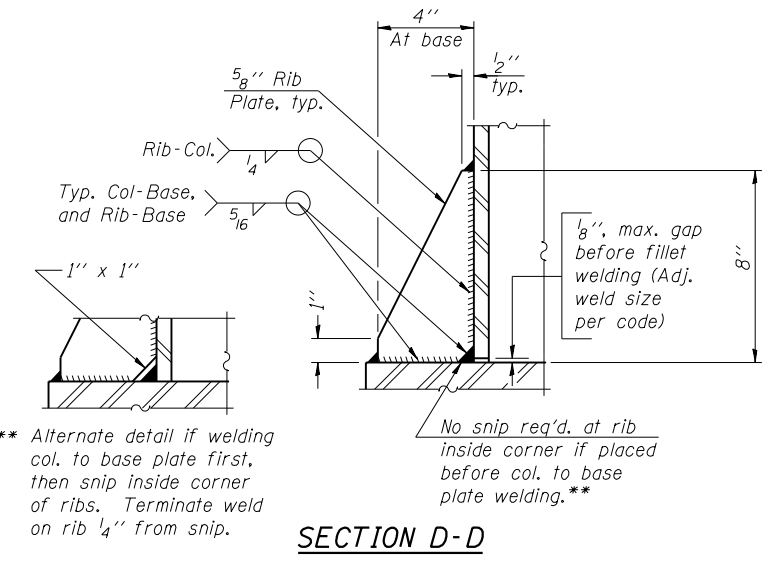


DETAIL B

Ribs shall be cut to fit slope of pipe.

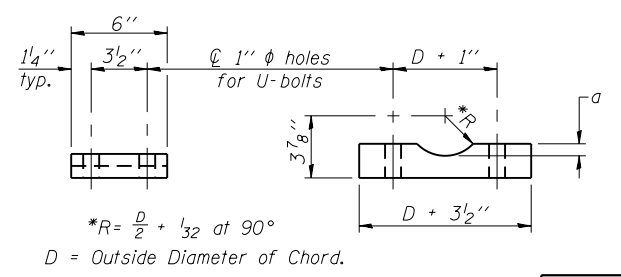


SECTION B-B



SECTION D-D

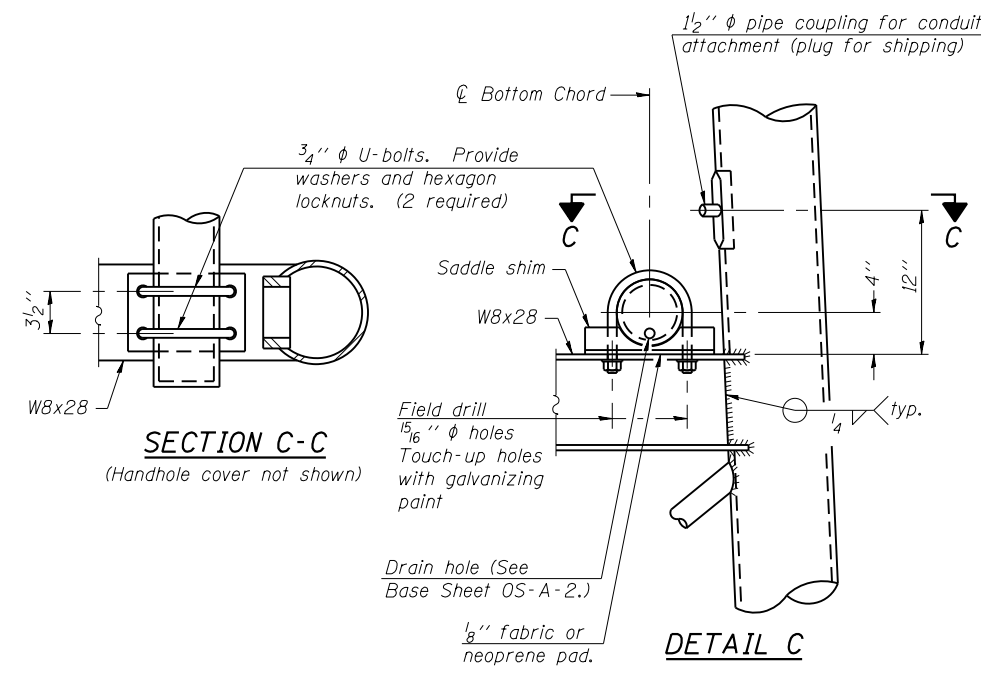
** Alternate detail if welding col. to base plate first, then snip inside corner of ribs. Terminate weld on rib 1/4" from snip.



SADDLE SHIM DETAIL

ASTM B26 Alloy 356-F or ASTM B209 Alloy 6061-T651 (4 required per sign truss)

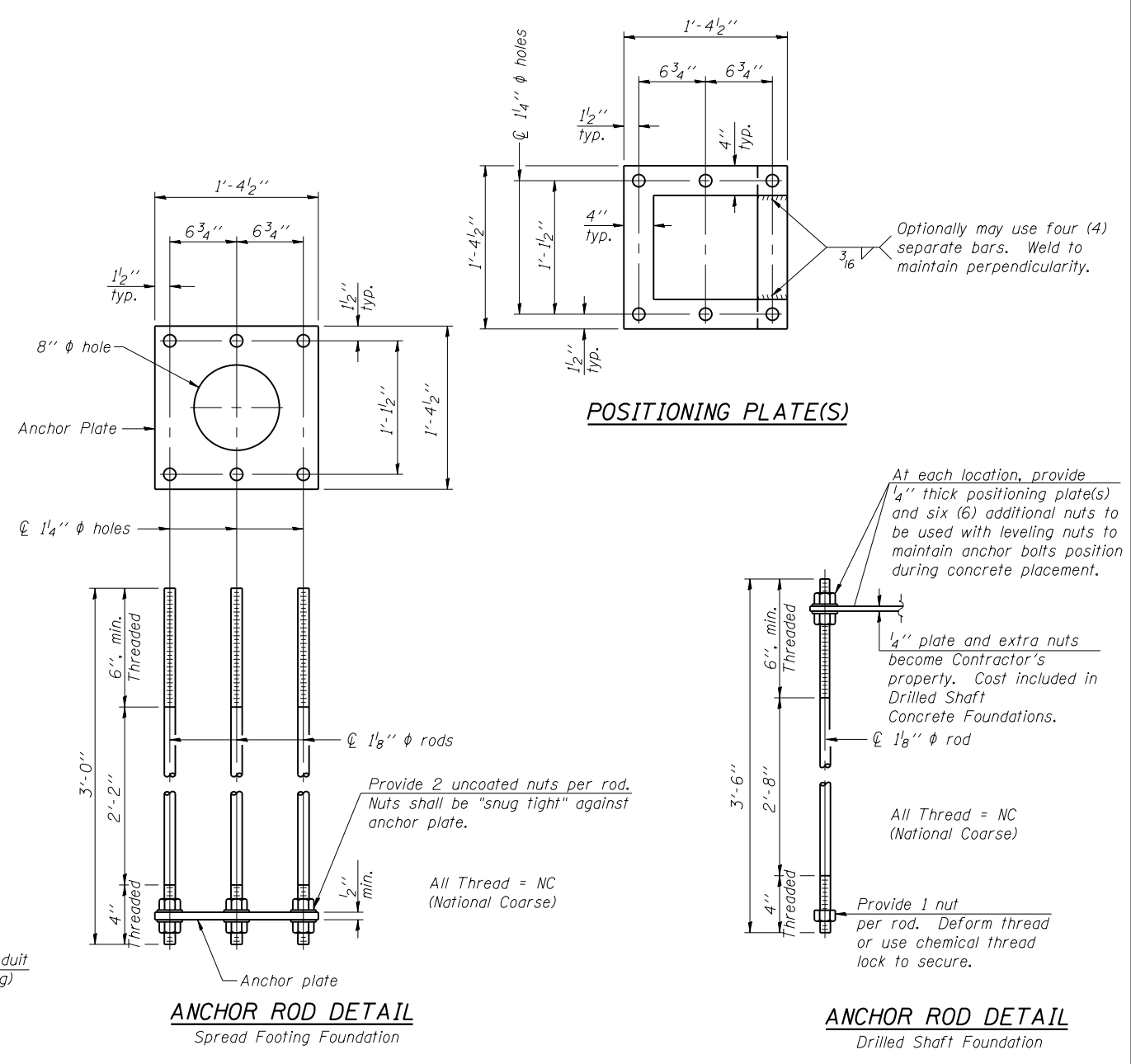
| Truss Chord Nominal Dia. | a |
|--------------------------|--------|
| 5" | 3/4" |
| 5 1/2" | 13/16" |
| 6" | 7/8" |
| 6 1/2" | 15/16" |



SECTION C-C

(Handhole cover not shown)

DETAIL C



POSITIONING PLATE(S)

ANCHOR ROD DETAIL

Spread Footing Foundation

ANCHOR ROD DETAIL

Drilled Shaft Foundation

Anchor rods shall conform to ASTM F1554 Grade 105. Hot dip galvanize upper 12" minimum with metal coatings conforming to the requirements of ASTM F2329. No welding shall be permitted on rods.

TYPE I-A TRUSS
8" ϕ PIPE SUPPORT FRAME DETAILS

See SN 016-2457 Bridge Plans for parapet and anchor bolt details.

| USER NAME = | DESIGNED - | REVISED - |
|--------------|------------|-----------|
| FILE NAME = | JJA | |
| PLOT SCALE = | TBP | |
| PLOT DATE = | RPW | |
| | TBP | |

| F.A.P. RTE. | SECTION | COUNTY | TOTAL SHEETS | SHEET NO. |
|---------------------------|-------------|--------|--------------|-----------|
| 372/373 | 2013-038B-R | COOK | 821 | 188 |
| CONTRACT NO. 60J16 | | | | |
| ILLINOIS FED. AID PROJECT | | | | |