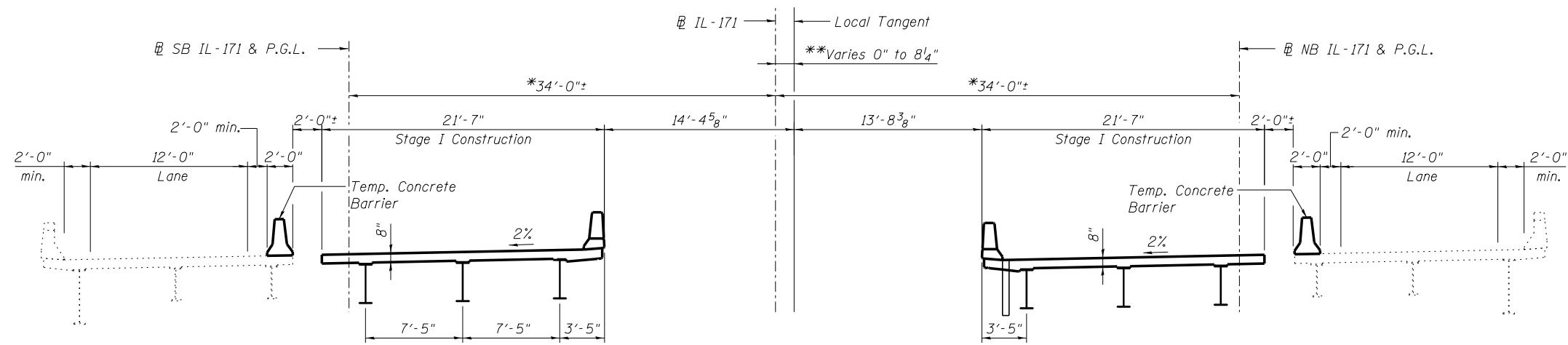


STAGE I REMOVAL
(Looking North)

*Measured radial to \mathbb{E} and P.G.L.'s., field verify.
 **Local Tangent is tangent to \mathbb{E} IL-171 at Sta. 104+81.00.



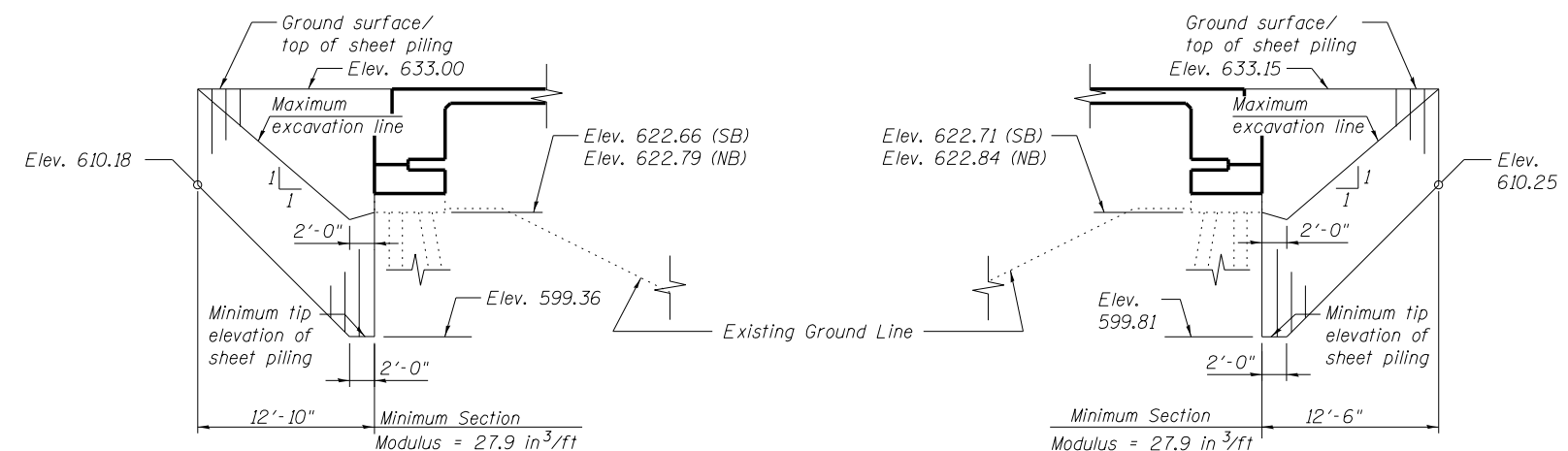
STAGE I CONSTRUCTION
(Looking North)

LEGEND

Indicates Removal of Existing Superstructure

BILL OF MATERIAL

ITEM	UNIT	TOTAL
Temporary Sheet Piling	Sq. Ft.	1,488



TEMPORARY SHEET PILING
(at South Abutment)

TEMPORARY SHEET PILING
(at North Abutment)

NOTES:

1. If the Contractor chooses to alter the temporary cantilevered sheet piling design requirements shown on the plans, a design submittal including plan details and calculations will be required for review and acceptance by the Engineer.
2. See sheet SA5 for details of Temporary Concrete Barrier. For quantity, see Roadway Plans.

benesch
engineers · scientists · planners
 Alfred Benesch & Company
 205 North Michigan Avenue, Suite 2400
 Chicago, Illinois 60601
 312-565-0450 Job No. 10093

FILE NAME = 0161000_60J16_003_staging_1.dgn	USER NAME = tjenicke	DESIGNED - DJM	REVISIONS -
		CHECKED - GJK	REVISIONS -
		DRAWN - MAK	REVISIONS -
		CHECKED - RMM	REVISIONS -

STATE OF ILLINOIS
DEPARTMENT OF TRANSPORTATION

STAGE I CONSTRUCTION DETAILS AND TEMPORARY SHEET PILING
STRUCTURE NO. 016-1000/1001

F.A.P. RTE.	SECTION	COUNTY	TOTAL SHEETS	SHEET NO.
372	2013-038B-R	COOK	821	251
CONTRACT NO. 60J16			ILLINOIS FED. AID PROJECT	

SHEET NO. SA3 OF SA40 SHEETS

X:\1000005\10093\Eng_Docs_Phase_1\1001_1st_Ave_over_47th_St\Final\0161000_60J16_003_staging_1.dgn 2:27:53 PM 6/23/2014