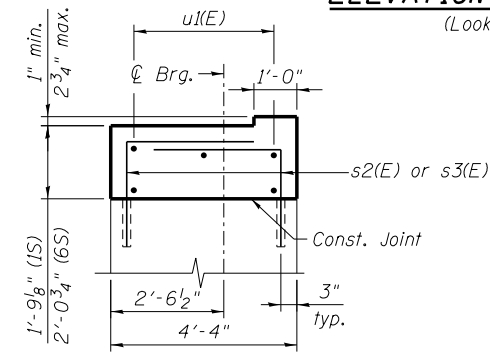
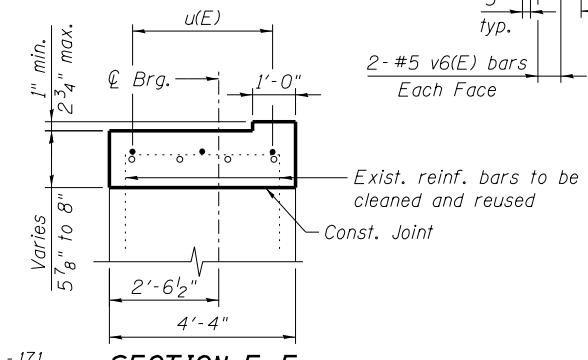


**ELEVATION - SN 016-1000**  
(Looking North)

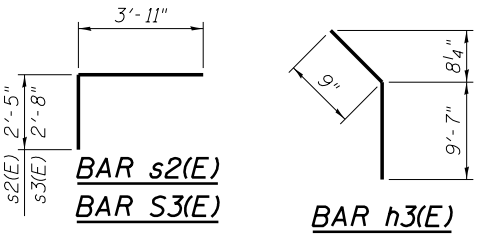
**MIN. BAR LAP**  
#6 bar = 3'-6"



**SECTION D-D**

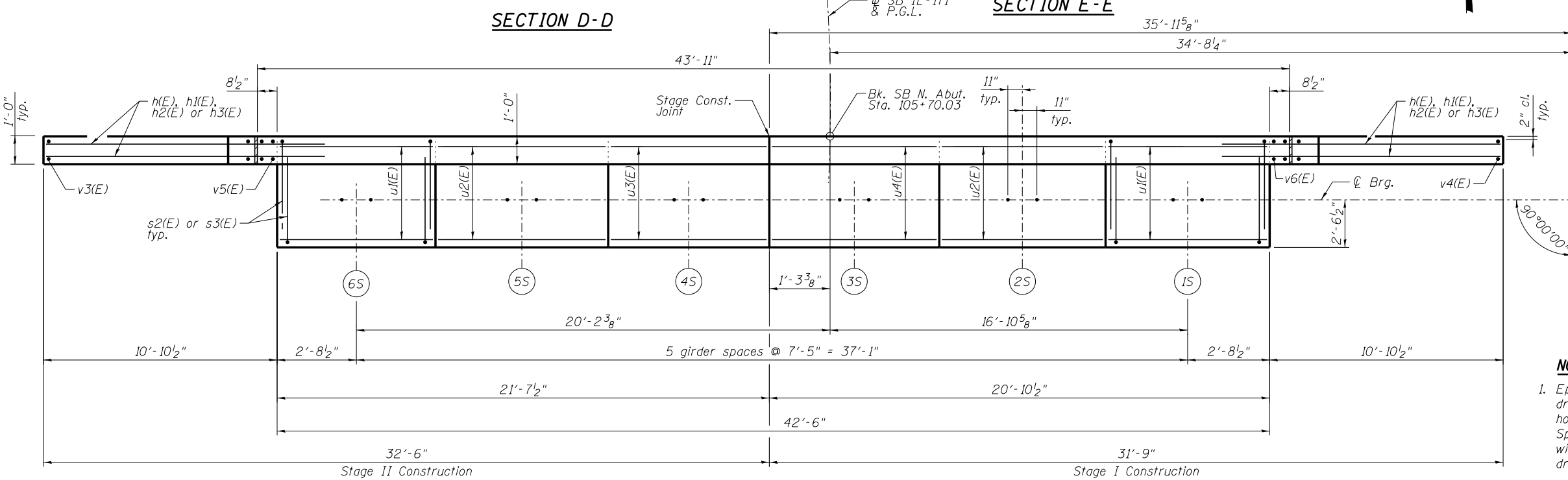


**SECTION E-E**

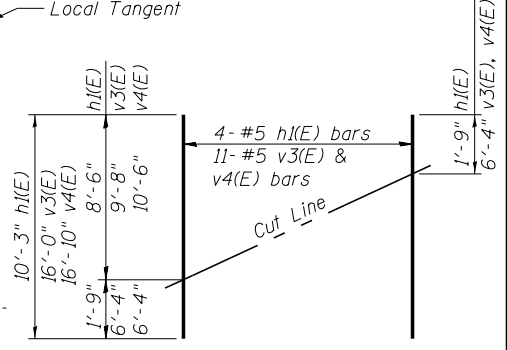


**BAR s2(E)**  
**BAR s3(E)**

**BAR h3(E)**



**TOP VIEW - SN 016-1000**



**FIELD CUTTING DIAGRAM**

Order h(E), v3(E) & v4(E) full length.  
Cut as shown and use remainder of bars in opposite face.

**NOTES:**

- Epoxy grout s2(E) & s3(E) bars in 9" min. drilled holes and h(E) bars in 9" min. drilled holes according to Section 584 of the Standard Specifications. Drilling and grouting included with "Concrete Structures". h(E) bars to be drilled and placed inside the existing vertical bars.
- See Sheet SA28 for anchor bolt details.

**BILL OF MATERIAL**

Bar	No.	Size	Length	Shape
h(E)	36	#6	11'-7"	—
h1(E)	16	#5	10'-8"	—
h2(E)	18	#6	14'-2"	—
h3(E)	4	#5	10'-4"	—
s2(E)	14	#5	6'-4"	┌
s3(E)	14	#5	6'-7"	┌
u1(E)	10	#6	6'-1"	—
u2(E)	6	#6	7'-1"	—
u3(E)	3	#6	7'-5"	—
u4(E)	3	#6	6'-8"	—
v3(E)	22	#5	16'-0"	—
v4(E)	22	#5	16'-10"	—
v5(E)	4	#5	5'-2"	—
v6(E)	4	#5	5'-11"	—
Concrete Structures	Cu. Yd.	13.5		
Reinforcement Bars, Epoxy Coated	Pound	2440		
Geocomposite Wall Drain	Sq. Yd.	26		
Pipe Underdrains for Structures 4"	Foot	68		

**benesch**  
engineers · scientists · planners  
Alfred Benesch & Company  
205 North Michigan Avenue, Suite 2400  
Chicago, Illinois 60601  
312-565-0450 Job No. 10093

FILE NAME =	USER NAME = jsurber	DESIGNED - RMM	REVISED -
0161000_60J16_031_NAbutMod_SB.dgn		CHECKED - DJM	REVISED -
		DRAWN - MAK	REVISED -
		CHECKED - RMM	REVISED -

**STATE OF ILLINOIS**  
**DEPARTMENT OF TRANSPORTATION**

**NORTH ABUTMENT MODIFICATION DETAILS**  
**STRUCTURE NO. 016-1000/1001**

SHEET NO. SA31 OF SA40 SHEETS

F.A.P. R.T.E.	SECTION	COUNTY	TOTAL SHEETS	SHEET NO.
372	2013-038B-R	COOK	821	279
CONTRACT NO. 60J16			ILLINOIS FED. AID PROJECT	

X:\1000005\10093\Eng\_Docs\_Phase\_1\11\SN\_016-1000\_1001\_1st\_Ave\_over\_47th\_St\_Final\01610000\_60J16\_031\_NAbutMod\_SB.dgn 2:00:34 PM 7/29/2014