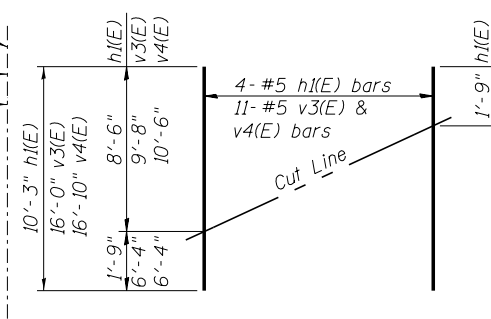
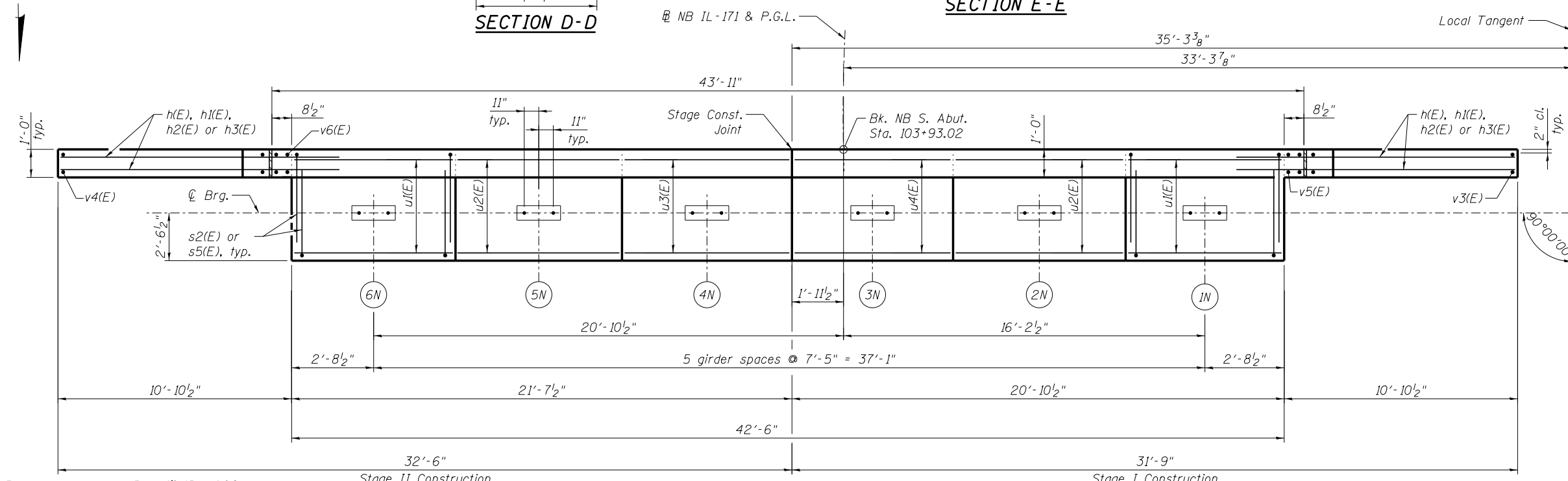
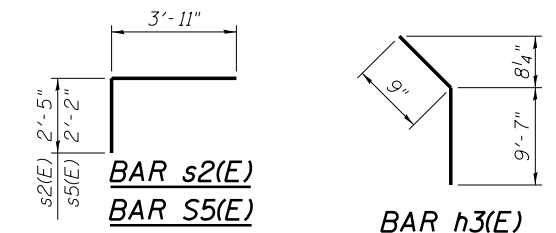
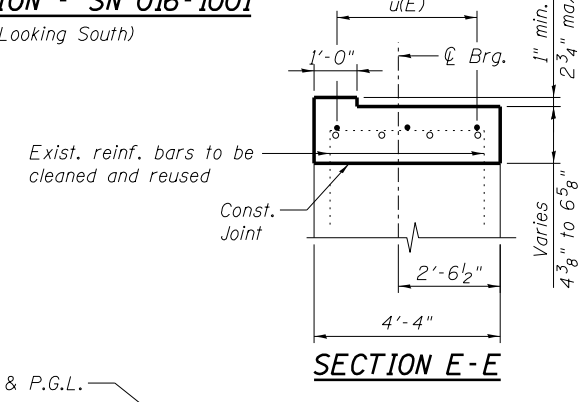
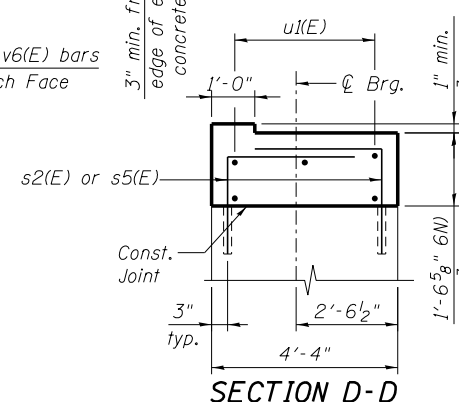
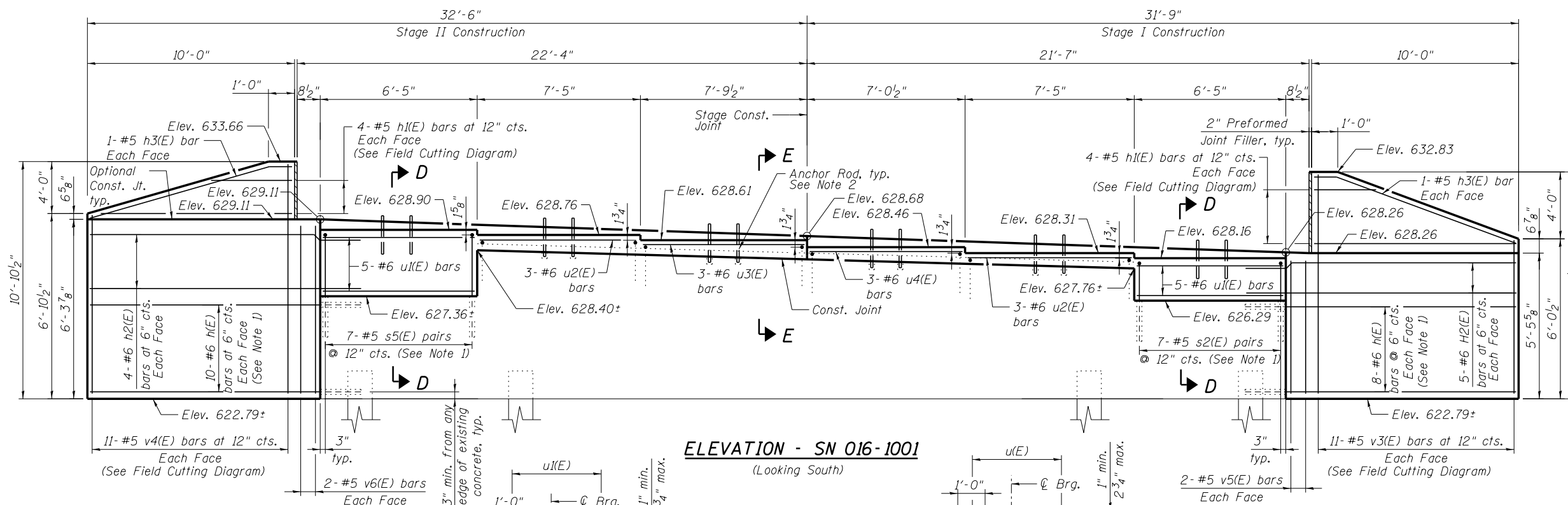


BILL OF MATERIAL

Bar	No.	Size	Length	Shape	
h(E)	36	#6	11'-7"	—	
h1(E)	16	#5	10'-8"	—	
h2(E)	18	#6	14'-2"	—	
h3(E)	4	#5	10'-4"	—	
s2(E)	14	#5	6'-4"	└	
s5(E)	14	#5	6'-1"	└	
u1(E)	10	#6	6'-1"	—	
u2(E)	6	#6	7'-1"	—	
u3(E)	3	#6	7'-5"	—	
u4(E)	3	#6	6'-8"	—	
v3(E)	22	#5	16'-0"	—	
v4(E)	22	#5	16'-10"	—	
v5(E)	4	#5	5'-1"	—	
v6(E)	4	#5	5'-10"	—	
Concrete Structures				Cu. Yd.	13.5
Reinforcement Bars, Epoxy Coated				Pound	2435
Geocomposite Wall Drain				Sq. Yd.	26
Pipe Underdrains for Structures 4"				Foot	69



MIN. BAR LAP
#6 bar = 3'-6"

- NOTES:**
- Epoxy grout s2(E) & s5(E) bars in 9" min. drilled holes and h(E) bars in 9" min. drilled holes according to Section 584 of the Standard Specifications. Drilling and grouting included with "Concrete Structures". h(E) bars to be drilled and placed inside the existing vertical bars.
 - See Sheet SA28 for anchor rod details.

benesch
engineers · scientists · planners

Alfred Benesch & Company
205 North Michigan Avenue, Suite 2400
Chicago, Illinois 60601
312-565-0450 Job No. 10093

FILE NAME =	USER NAME = jsurber	DESIGNED - RMM	REVISED -
0161000_60J16_036_SAAbutMod_NB.dgn		CHECKED - DJM	REVISED -
		PLOT SCALE =	REVISED -
		DRAWN - MAK	REVISED -
		CHECKED - RMM	REVISED -
		PLOT DATE = 12/20/2012	

STATE OF ILLINOIS
DEPARTMENT OF TRANSPORTATION

SOUTH ABUTMENT MODIFICATION DETAILS
STRUCTURE NO. 016-1000/1001

F.A.P. RTE.	SECTION	COUNTY	TOTAL SHEETS	SHEET NO.
372	2013-038B-R	COOK	821	284
CONTRACT NO. 60J16			ILLINOIS FED. AID PROJECT	

SHEET NO. SA36 OF SA40 SHEETS

X:\1000005\10093\Eng_Docs_Phase_1\11\SN_016_1000_1001_1st_Ave_over_47th_St\Final\0161000_60J16_036_SAAbutMod_NB.dgn 2:00:36 PM 7/29/2014