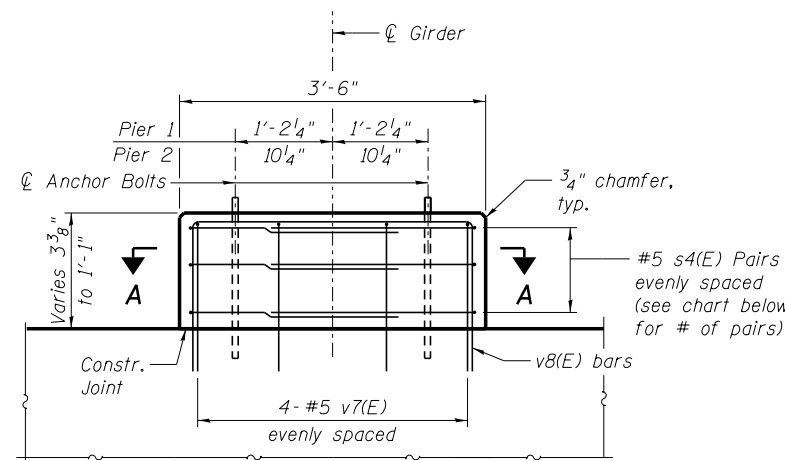
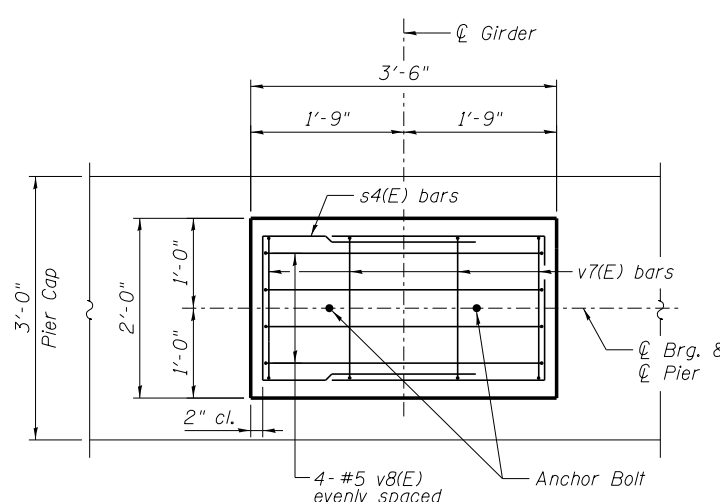


**FOUR PIERS
BILL OF MATERIAL**

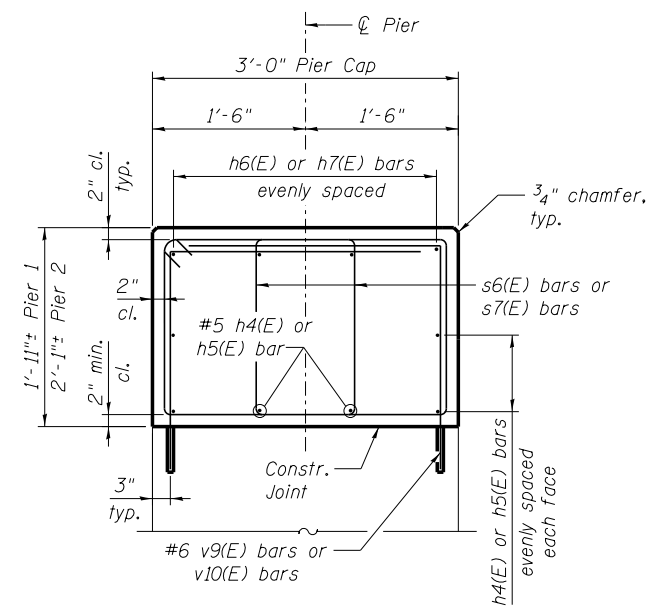
Bar	No.	Size	Length	Shape
h4(E)	24	#5	19'-9"	—
h5(E)	24	#5	21'-6"	—
h6(E)	16	#8	19'-9"	—
h7(E)	16	#8	21'-6"	—
s4(E)	72	#5	7'-2"	□
s6(E)	208	#6	7'-8"	□
s7(E)	208	#6	8'-2"	□
v7(E)	80	#5	5'-8"	□
v8(E)	80	#5	7'-2"	□
v9(E)	176	#6	4'-10"	□
v10(E)	176	#6	5'-2"	□
Concrete Structures			Cu. Yd.	40.7
Reinforcement Bars, Epoxy Coated			Pound	12,000



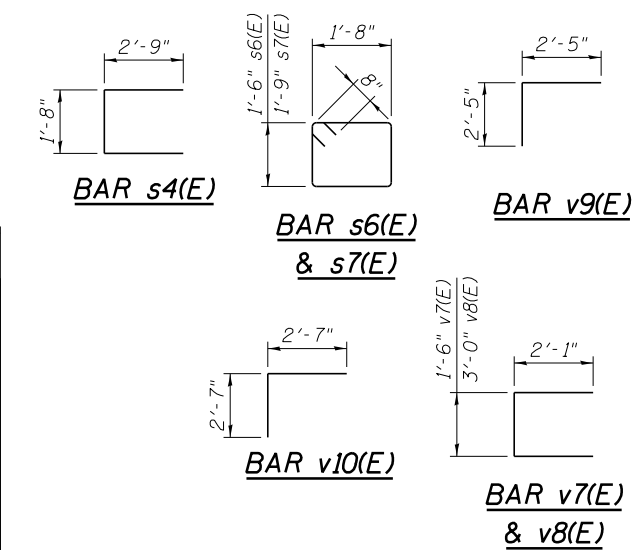
ELEVATION



SECTION A-A

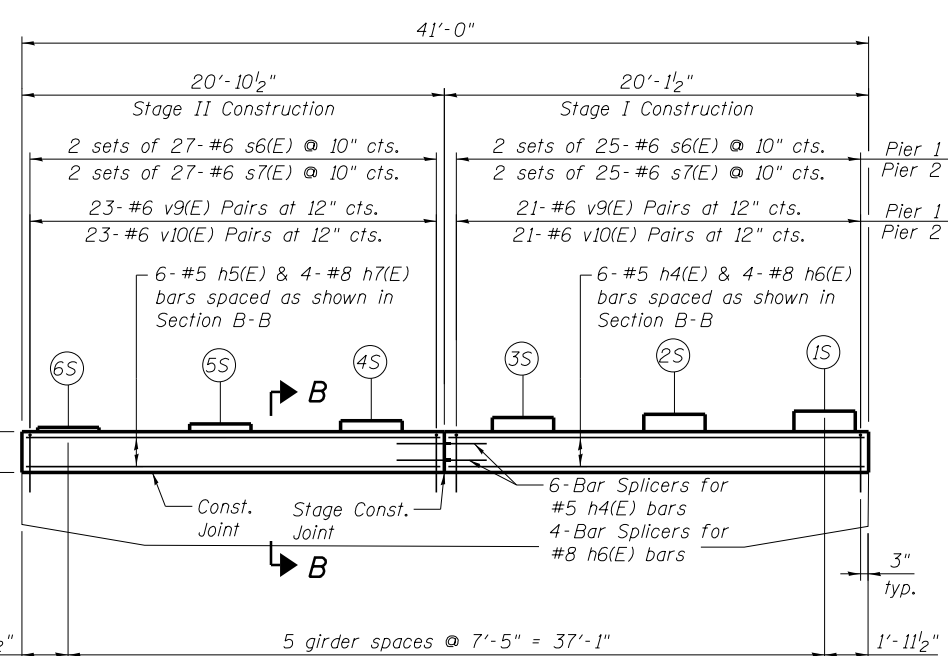


SECTION B-B

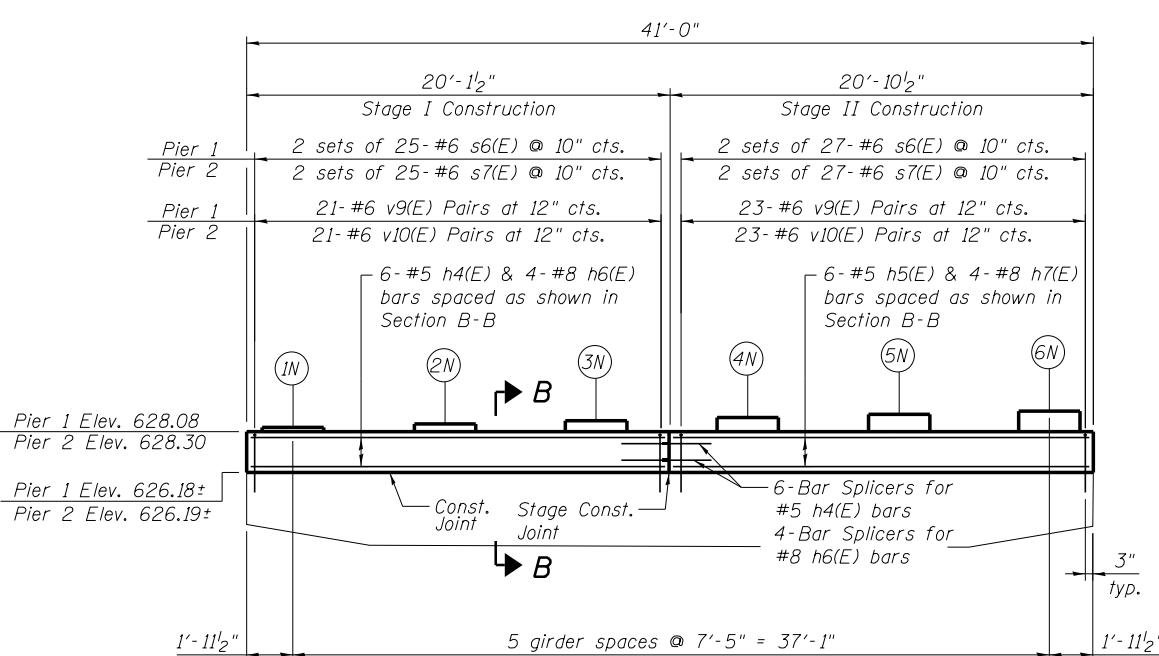


TYPICAL CONCRETE EXTENSIONS FOR BEARINGS

Piers 1 & 2 Pedestals	# of s4(E) Pairs
1S	3
2S	2
3S	2
4S	1
5S	1
6S	0
1N	0
2N	1
3N	1
4N	2
5N	2
6N	3



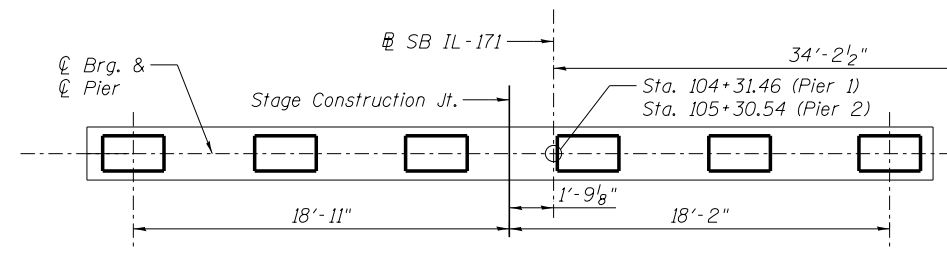
**PIER 1 & 2 SB
(Looking North)**



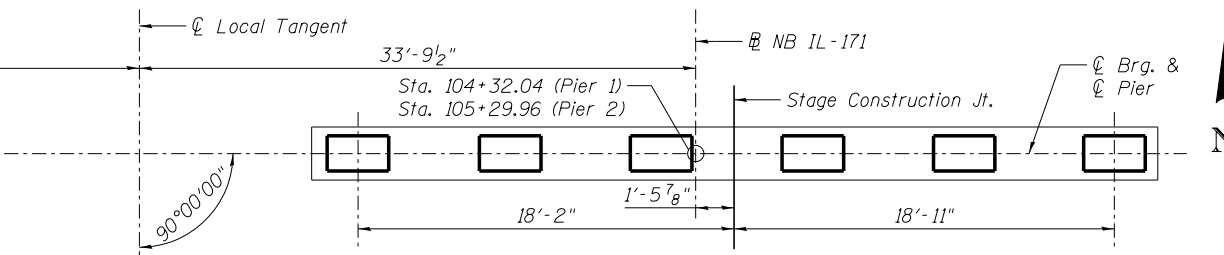
**PIER 1 & 2 NB
(Looking North)**

PEDESTAL ELEVATIONS

Girder No.	Pier 1	Pier 2
1S	628.96	629.24
2S	628.81	629.09
3S	628.66	628.94
4S	628.51	628.79
5S	628.36	628.64
6S	628.22	628.49
1N	628.36	628.63
2N	628.50	628.78
3N	628.65	628.93
4N	628.80	629.07
5N	628.95	629.22
6N	629.10	629.37



PLAN - PIER 1 & 2 SB



PLAN - PIER 1 & 2 NB

- NOTES:**
- Epoxy grout v9(E) and v10(E) bars in 9" min. drilled holes according to Section 584 of the Standard Specifications. Cost of drilling and grouting included with "Concrete Structures".
 - See Sheet SA40 for Bar Splicer Details.
 - Reinforcement not to be provided in pedestals at Girders 6S & 1N.
 - Space reinforcement to miss anchor bolts.

FILE NAME =	USER NAME =	DESIGNED -	REVISIONS
0161000.60J16.039.bear-ingenxten.dgn	jsurber	RMM	
		DJM	
		FSM	
		RMM	

F.A.P. RTE.	SECTION	COUNTY	TOTAL SHEETS	SHEET NO.
372	2013-038B-R	COOK	821	287
				CONTRACT NO. 60J16
ILLINOIS FED. AID PROJECT				

X:\100005\10093\Eng_Docs_Phase_1\11_S\016-1000-1001-1st-Ave-over-47th-St-Final\0161000-60J16-039_bear-ingenxten.dgn 9:41:04 AM 7/29/2014