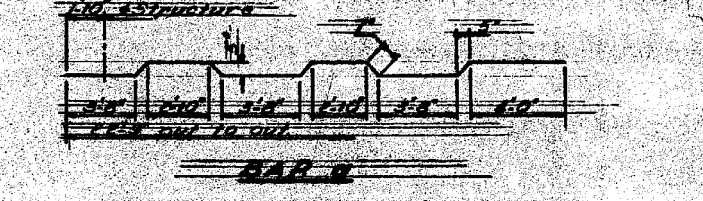
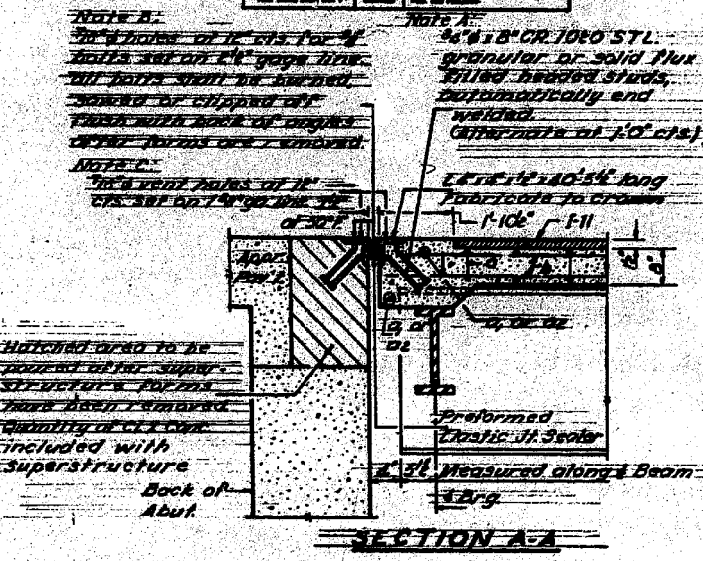
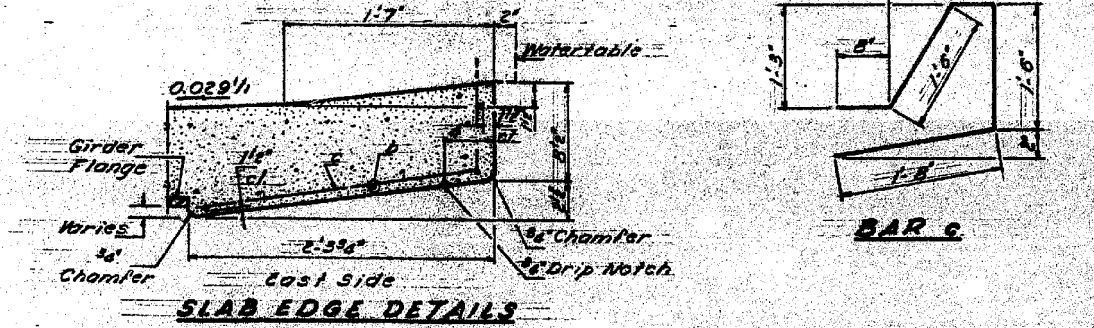
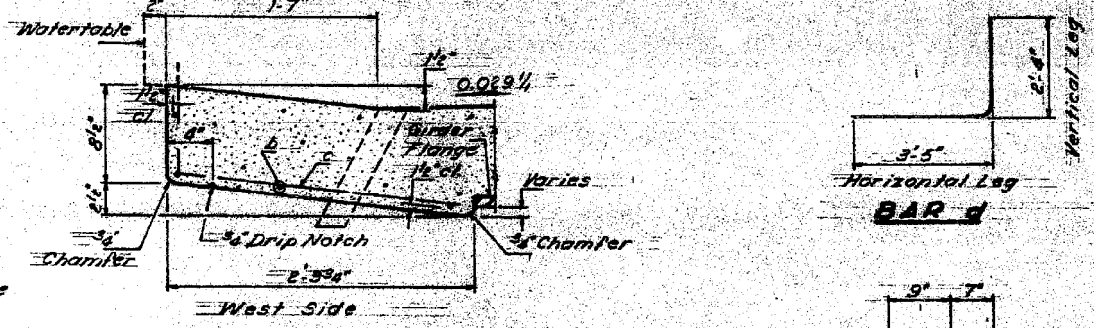
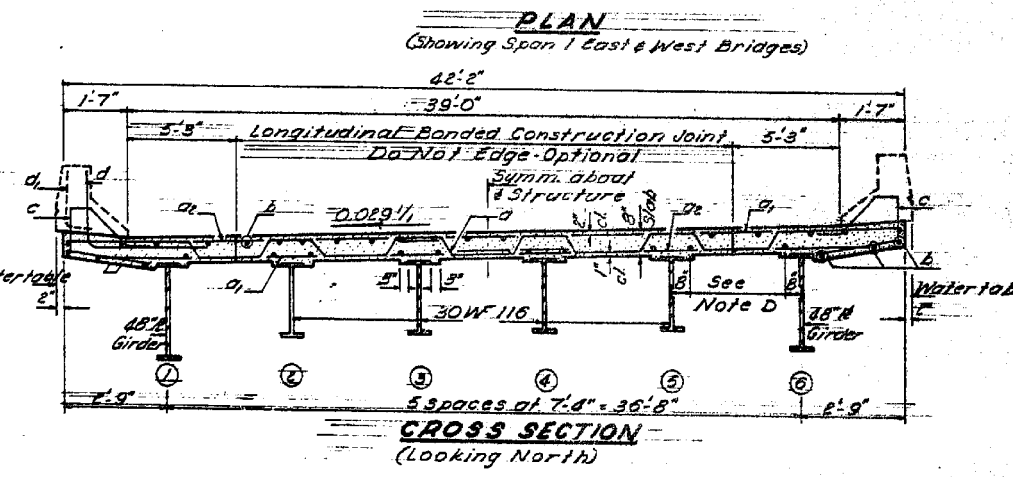
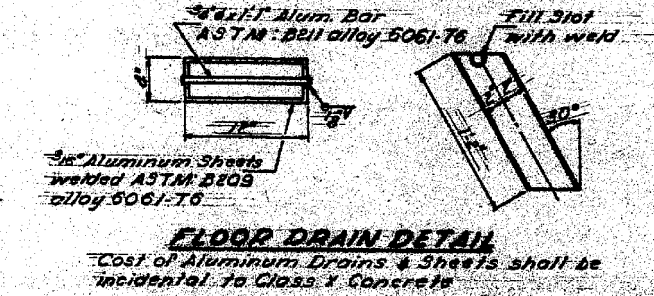
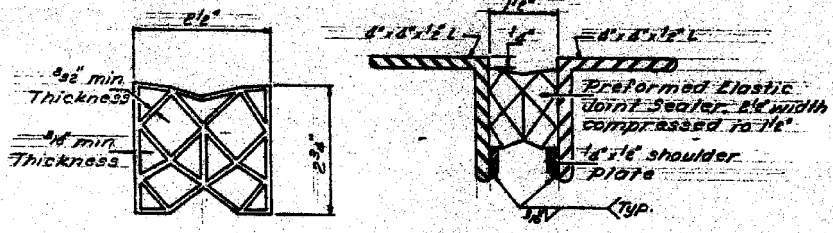
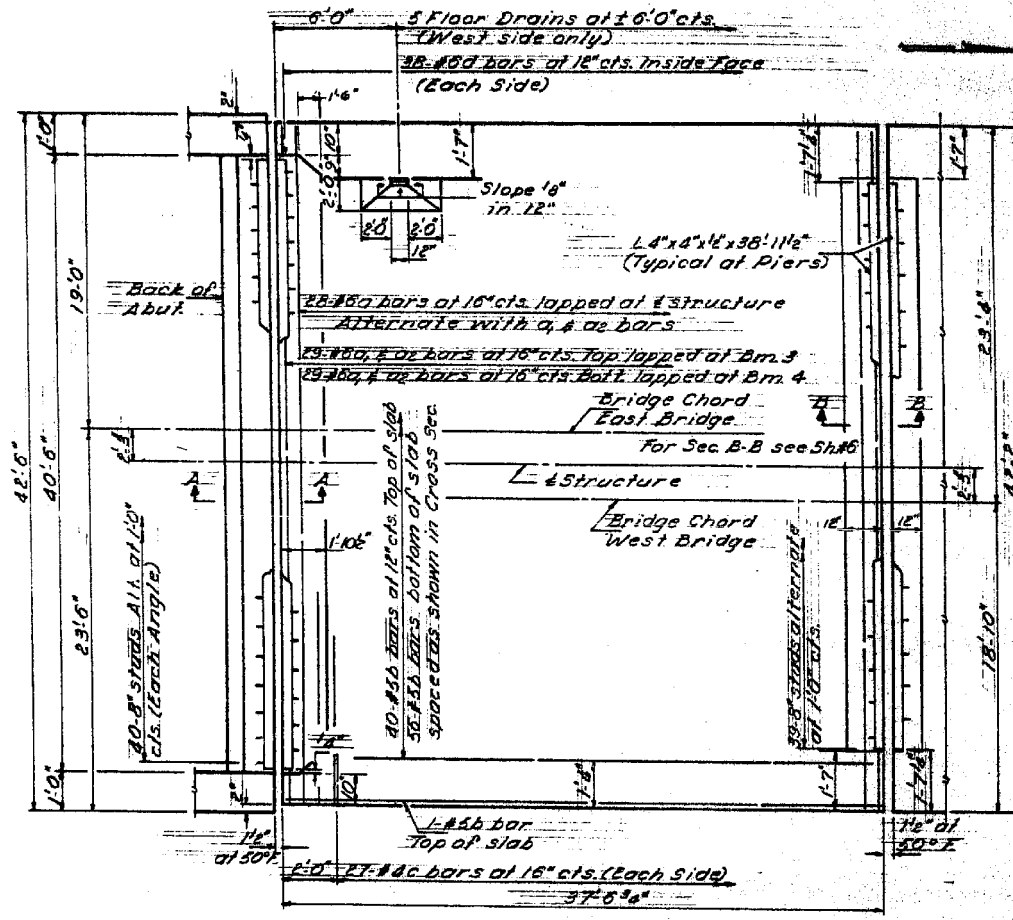


0102-683(31)

DATE	BY	CHKD	APP
193	K	COOK	199 105

SHEET NO. 5  
25 SHEETS



**FOUR SPANS ALL OF MATERIAL**

NO.	SPAN	LENGTH	SHOULDER
1	174	40	23.7
2	232	45	25.9
3	232	40	16.6
4	398	45	57.0
5	216	45	3.71
6	308	40	3.9

Reinforcement Bars 125, 41900  
Structural Steel 125, 14250  
Cross X Concrete Cu 103, 772.1  
Preformed Elastic Joint Sealer 11.71, 189

\* Weight of bearing assemblies with lead plates & anchor bolts are included as structural steel. 251 W/L + 10000 LBS.

DESIGNED: John Hayes  
CHECKED: J. Kessler  
DRAWN: J. Kessler  
CHECKED: J. Kessler

EXAMINED: [Signature]  
PASSED: [Signature]  
APPROVED: [Signature]

SEPT 28 1967

Note D:  
10-A56 bars at 8" cts. Typical Spacing

**SUPERSTRUCTURE EAST & WEST BRIDGES**  
SPAN - 78.3  
FA. RT 139 S.W. GIOE-683 N.B.K.  
COOK COUNTY  
STATION 104+88.77

FILE NAME = 0161000.60J16.042.existplan.dgn	USER NAME = tjenicke	DESIGNED - FSM	REVISIONS
		CHECKED - RMM	1
		DRAWN - FSM	2
		CHECKED - RMM	3
		PLOT DATE = 12/20/2012	REVISIONS

**FOR INFORMATION ONLY**

F.A.P. RTE.	SECTION	COUNTY	TOTAL SHEETS	SHEET NO.
372	2013-0388-R	COOK	821	290

CONTRACT NO. 60J16  
ILLINOIS FED. AID PROJECT