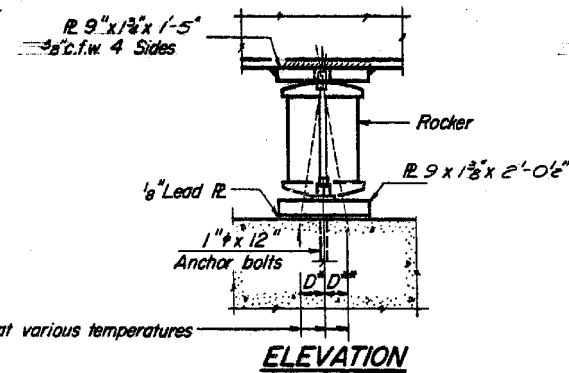
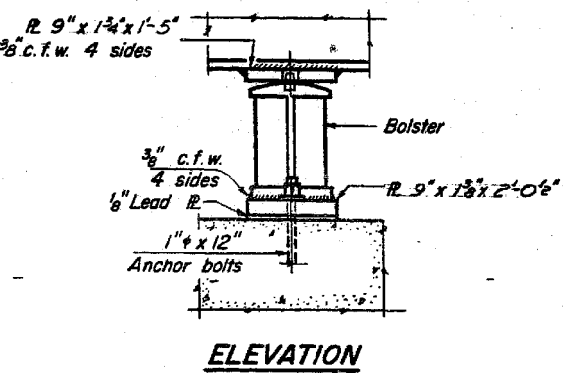


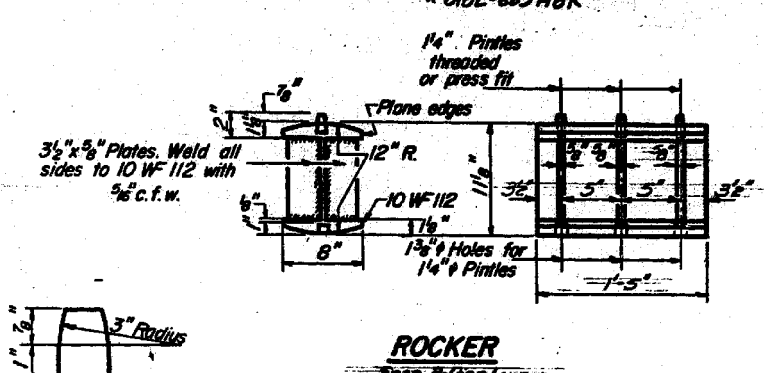
SECTION



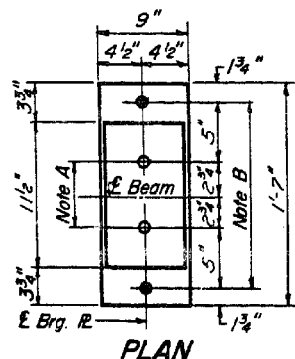
ELEVATION



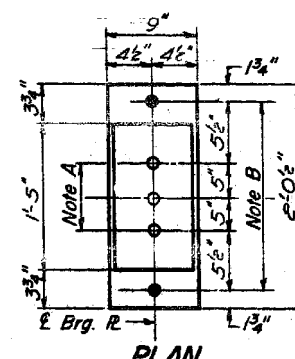
ELEVATION



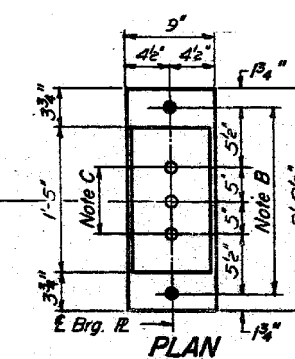
ROCKER



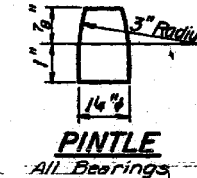
PLAN
AT ABUTMENTS



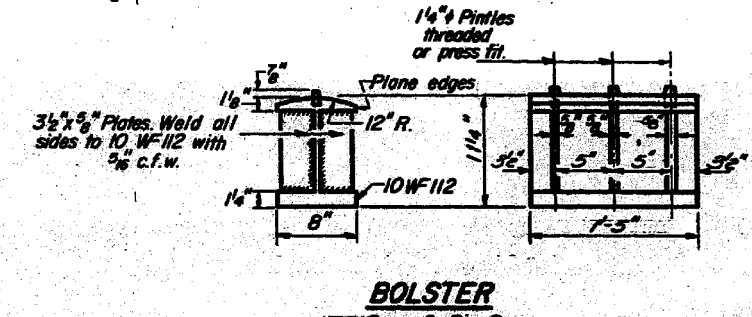
PLAN
AT PIER 1



PLAN
AT PIER 2



PINTE
All Bearings



BOLSTER

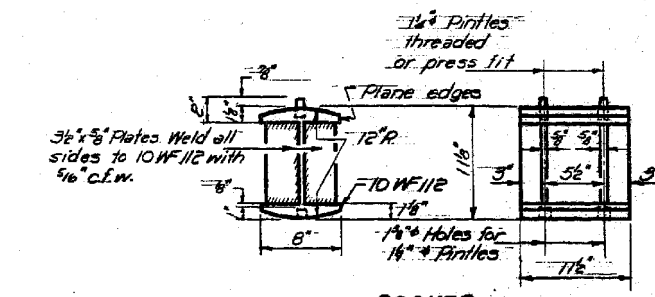
NOTE A
1 3/8" Holes - 1" deep in top R.
for pintles. Thread or press fit
pintles into bottom R.

NOTE B
1 1/2" Holes for 1" anchor bolts.
2 1/2 x 2 1/2 x 3/8" R. Washers
under nut.

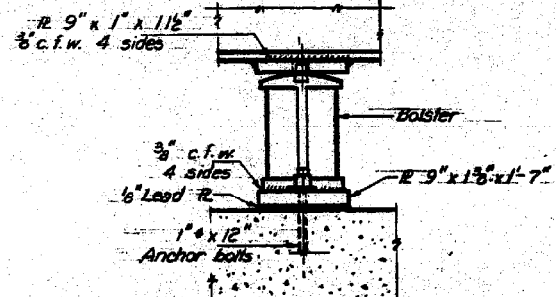
NOTE C
1 3/8" Holes 1" deep in top R.
only for 1 1/2" pintles.

NOTES ON SETTING OF ANCHOR BOLTS AT EXP. BRGS.

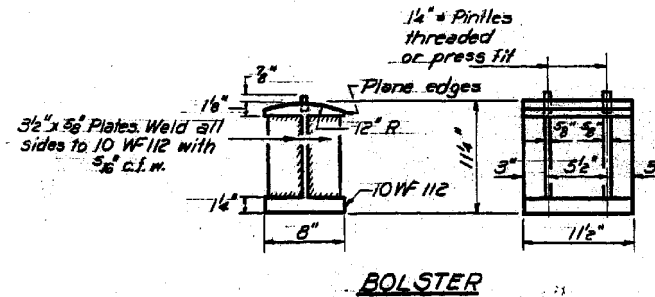
- a) D* (Side of brg. away from fixed brg.)
D* = 1/8" per each 100' of expansion for every 15° fall below the normal temp. of 50°F.
- D** (Side of brg. toward fixed brg.)
D** = 1/8" per each 100' of expansion for every 15° rise above the normal temp. of 50°F.
- b) After beams have been erected and dimensions D* or D** determined, holes shall be drilled and anchor bolts shall be grouted in place. All fixed anchor bolts may be built into the masonry.



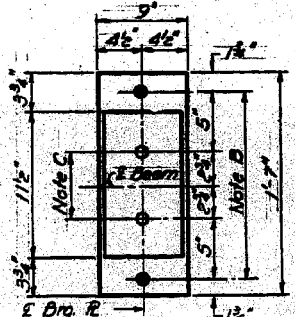
ROCKER
At Abutments



ELEVATION
Spans 113 of Piers 112



BOLSTER
Spans 113 of Piers 112



PLAN
At Piers 112
Span 113

DESIGNED: John Hoyer
CHECKED: Stanley S. L.
DRAWN: J.M. HENINGER
CHECKED: Stanley S. L.

EXAMINED: Sept 28 1967
PASSED: H.E. Baumann
APPROVED: [Signature]

I-2-B 9-1-65

BEARING DETAILS
EAST & WEST BRIDGES
F.A. RT. 133 SEC. 0102-683 HBK
COOK COUNTY
STA. 104+82.77

FILE NAME =	USER NAME = tjenicke	DESIGNED - FSM	REVISED -
0161000.60J16.047.existplan.dgn		CHECKED - RMM	REVISED -
		DRAWN - FSM	REVISED -
		CHECKED - RMM	REVISED -

FOR INFORMATION ONLY			
F.A.P. RTE.	SECTION	COUNTY	TOTAL SHEETS
372	2013-038B-R	COOK	821
			295
		CONTRACT NO. 60J16	
		ILLINOIS FED. AID PROJECT	