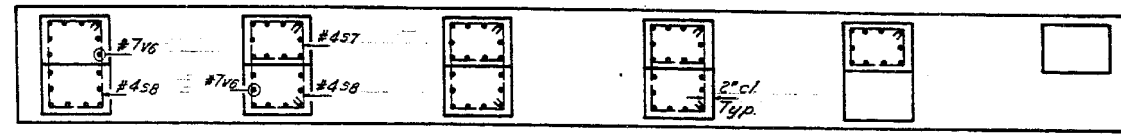
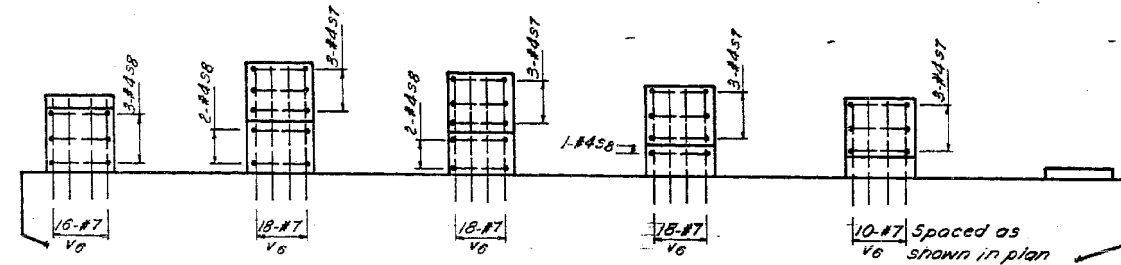


STATE OF ILLINOIS
DEPARTMENT OF PUBLIC WORKS & BUILDINGS
DIVISION OF HIGHWAYS

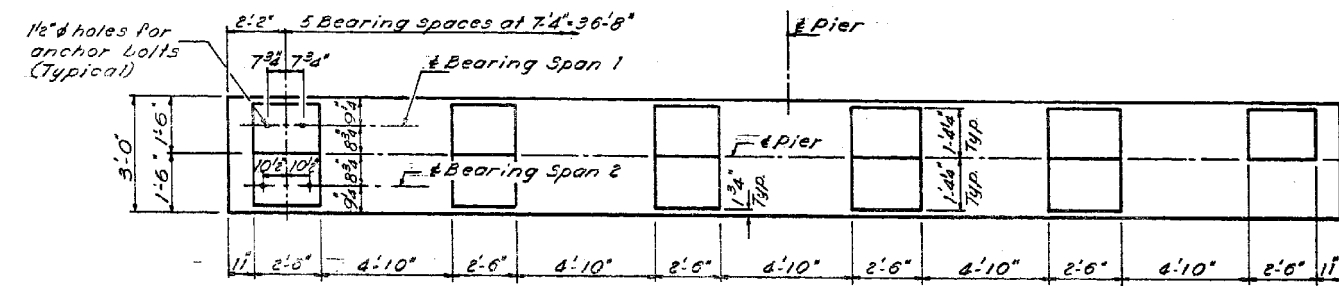
DATE	BY	NO.	TOTAL SHEETS	SHEET NO.
11/13	* .COOK	149	117	23
* 0102-683 HBK				



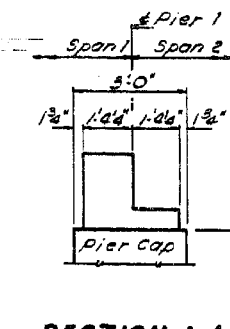
PLAN
(Showing Reinforcement)



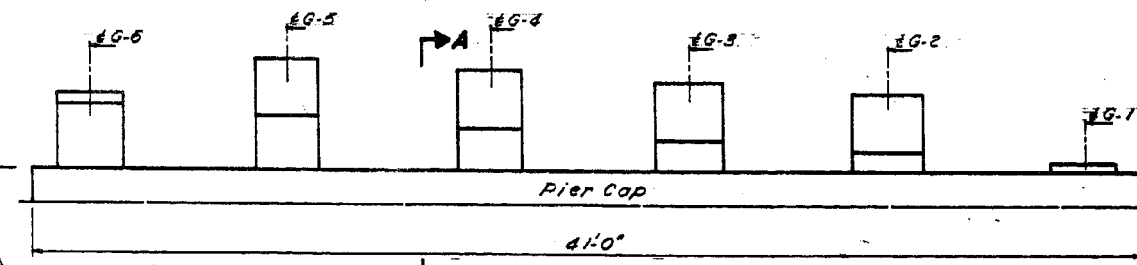
ELEVATION
Showing Reinforcement
(Looking South)



PLAN
(Showing Dimensions)



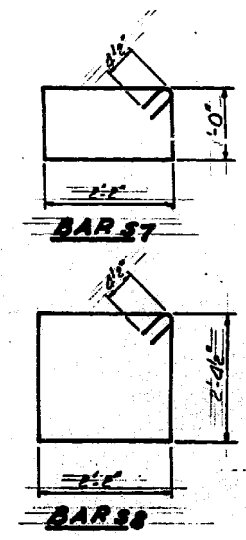
SECTION A-A
(Looking West)



ELEVATION
(Looking South)

SEAT ELEVATIONS

	Span 1						Span 2					
	G-1	G-2	G-3	G-4	G-5	G-6	G-1	G-2	G-3	G-4	G-5	G-6
East Bridge	626.63	628.43	628.64	628.85	629.07	627.70	626.46	626.67	626.88	627.10	627.31	627.52
West Bridge	626.50	628.28	628.49	628.70	628.91	627.54	626.32	626.54	626.75	626.96	627.18	627.39



Notes
Work this sheet with sheet 76.
Class X Concrete & Reinf. Bars for
Pedestals are billed on sheet 18.
Pour Pedestals monolithically with
pier cap.

**PEDESTALS-PIER 1
EAST & WEST BRIDGES
E.A. RT 133 SEC. C - 683 HBK
COOK COUNTY
STATION 104+82.77**

DESIGNED *John Hager*
CHECKED *John Hager*
DRAWN *J. Kessler*
CHECKED *John Hager*

EXAMINED *Sept 28 1967*
PASSED *W. B. ...*
APPROVED *W. B. ...*

benesch
engineers · scientists · planners

Alfred Benesch & Company
205 North Michigan Avenue, Suite 2400
Chicago, Illinois 60601
312-565-0450 Job No. 10093

FILE NAME = 0161000_60J16_053.existplan.dgn	USER NAME = tjenicke	DESIGNED - FSM	REVISIONS
		CHECKED - RMM	REVISIONS
		DRAWN - FSM	REVISIONS
		CHECKED - RMM	REVISIONS

STATE OF ILLINOIS
DEPARTMENT OF TRANSPORTATION

EXISTING PLAN INFORMATION (13 OF 25)
STRUCTURE NO. 016-1000/1001
SHEET NO. SAX13 OF SAX25 SHEETS

FOR INFORMATION ONLY

F.A.P. RTE.	SECTION	COUNTY	TOTAL SHEETS	SHEET NO.
372	2013-038B-R	COOK	821	301
CONTRACT NO. 60J16				
ILLINOIS FED. AID PROJECT				

X:\1000005\10093\Eng_Docs_Phase_1\1001_1st_Ave_over_47th_St\Final\0161000_60J16_053_existplan.dgn 2:30:28 PM 6/23/2014