

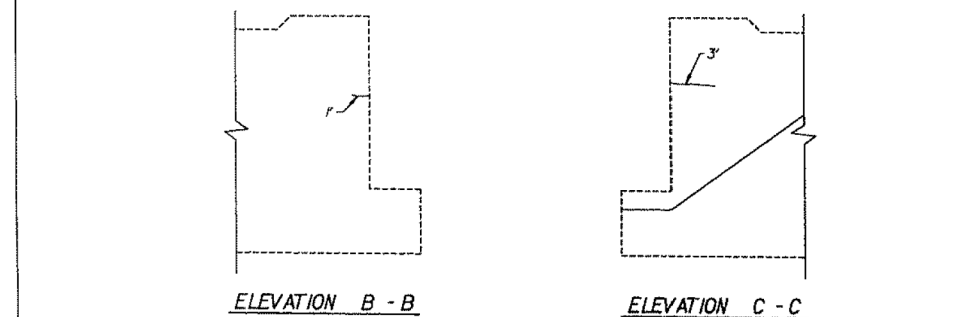
ROUTE NO.	SECTION	PLANT	DATE	SCALE	SHEET NO. S-7
FA-116-171	102-683-HBK	COOK	8/21	1/8	SHEETS S-14
FED. ROAD DIST. NO. 7	ILLINOIS	FED. AID PROJECT			

BILL OF MATERIAL				
Bar	No.	Size	Length	Shape
d (E)	48	#6	2'-2"	□
p (E)	24	#5	2'-0"	—
s <sub>1</sub> (E)	24	#4	6'-11"	□
h (E)	6	#6	11'-2"	—
h <sub>2</sub> (E)	6	#6	22'-7"	—

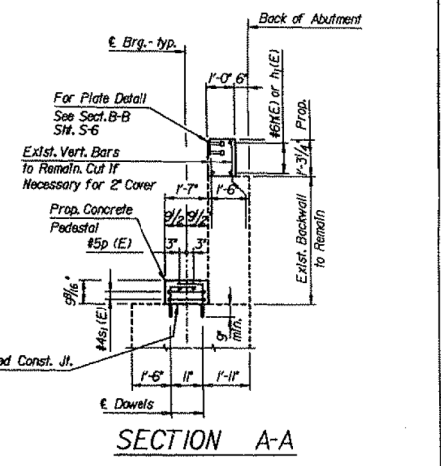
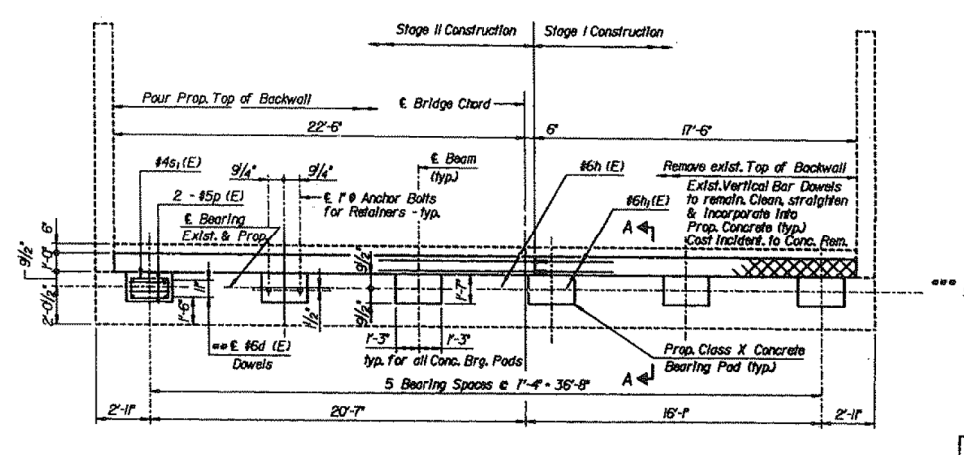
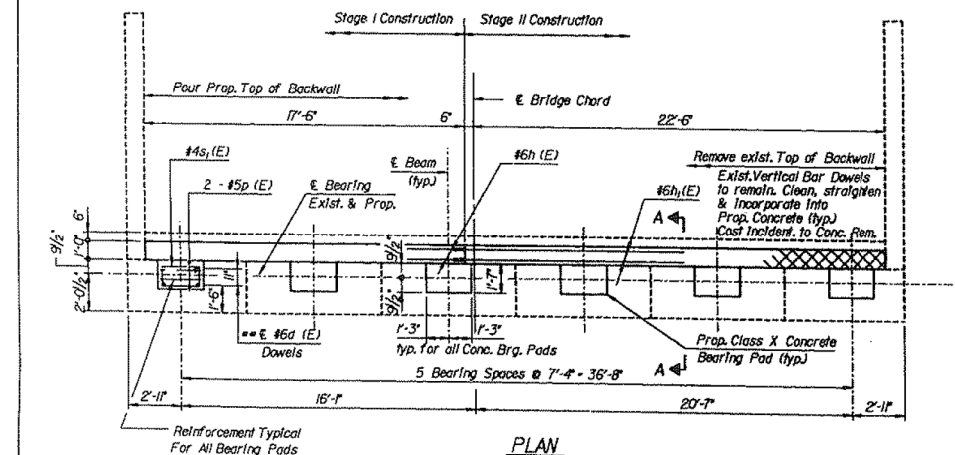
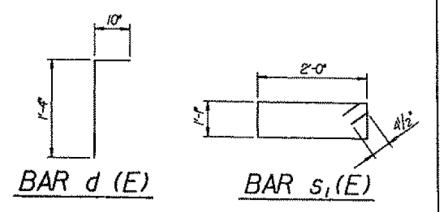
  

ITEM	UNIT	QTY.
Concrete Removal	Cu. Yd.	4J
Class X Concrete	Cu. Yd.	1.4
Epoxy Crack Sealing	Lin. Ft.	30
Reinforcement Bars, Epoxy Coated	Pound	680
Formed Concrete Repair Depth ≤ 5"	Sq. Ft.	15

Quantities shown are for Northbound Bridge - N & S Abutments



- Class X Concrete Superstructure Is Included In Bill of Material for Deck Repairs SH. S-4
- Epoxy grout d (E) bars in 1" diameter x 9" minimum drilled holes. The grout and the method of application shall be approved by the Department. (See Special Provisions).
- Banded Construction Joint in accordance to Article 504.3(a)(2) of Standard Specifications.



DESIGNED	LM
CHECKED	ELD
DRAWN	MF
CHECKED	JAA

- LEGEND**
- Formed Concrete Repair ≤ 5" deep
  - Concrete Removal
  - Exposed Reinforcing Bars
  - Epoxy Crack Sealing

**ABUTMENT REPAIRS - NORTHBOUND**

BRIDGE REHABILITATION ILLINOIS ROUTE 171  
NORTHBOUND & SOUTHBOUND  
OVER 47TH STREET  
FAU 2746 SECTION 102-683 HBK  
STATION 104+82.77  
COOK COUNTY

STRUCTURE NO. 016-1001 N.B.  
STRUCTURE NO. 016-1000 S.B.

**BOWMAN, BARRETT & ASSOCIATES INC.**  
CONSULTING ENGINEERS  
55 KLEBERG AVENUE SUITE 200 CHICAGO, ILLINOIS 60641  
JOB NO. 04

**benesch**  
engineers · scientists · planners

Alfred Benesch & Company  
205 North Michigan Avenue, Suite 2400  
Chicago, Illinois 60601  
312-565-0450 Job No. 10093

FILE NAME =	USER NAME = tjenicke	DESIGNED - FSM	REVISIONS -
0161000.60J16.058.existplan.dgn	PLOT SCALE =	CHECKED - RMM	REVISIONS -
	PLOT DATE = 12/20/2012	DRAWN - FSM	REVISIONS -
		CHECKED - RMM	REVISIONS -

STATE OF ILLINOIS  
DEPARTMENT OF TRANSPORTATION

EXISTING PLAN INFORMATION (18 OF 25)  
STRUCTURE NO. 016-1000/1001

FOR INFORMATION ONLY

F.A.P. RTE.	SECTION	COUNTY	TOTAL SHEETS	SHEET NO.
372	2013-038B-R	COOK	821	306
CONTRACT NO. 60J16			ILLINOIS FED. AID PROJECT	

6/23/2014 2:31:22 PM X:\100005\10093\Eng\_Docs\_Phase\_1\11\SN\_016\_1000\_1001\_1st\_Ave\_over\_47th\_St\Final\0161000-60J16\_058.existplan.dgn