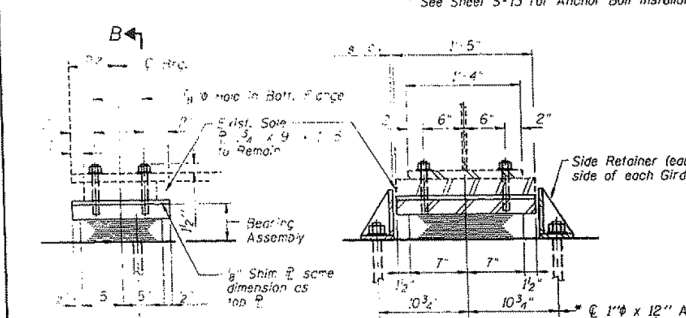
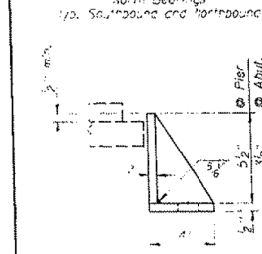


ELEVATION AT ABUT.  
TYPE I ELASTOMERIC EXP. BRG.



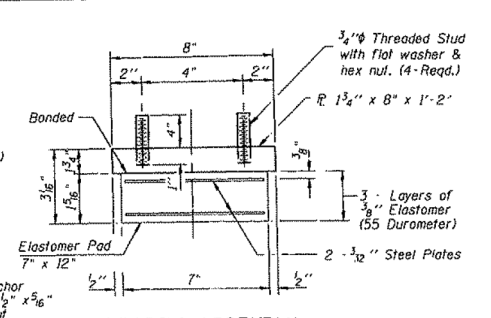
ELEVATION AT PIER I  
TYPE I ELASTOMERIC EXP. BRG.



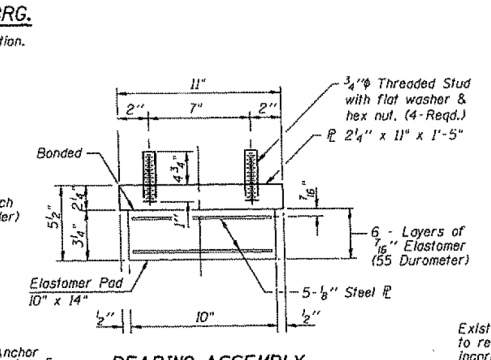
SIDE RETAINER

BEAM DEFLECTIONS (KIPS)		
	End Spans	Center Span
Live Load (L)	36.8	43.5
Dead Load (D)	22.0	62.6
Impact (I)	11.0	9.7
Reaction (R)	65.8	115.8

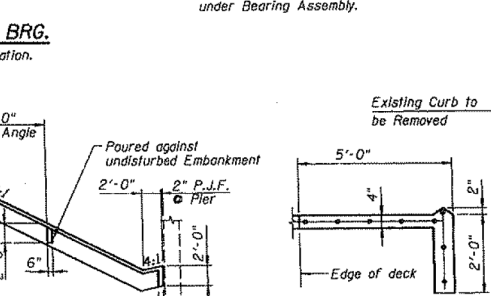
DESIGNED - JAA  
CHECKED - ELD  
DRAWN - JAA  
CHECKED - ELD



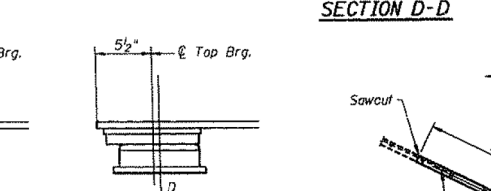
BEARING ASSEMBLY



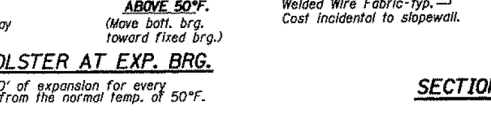
BEARING ASSEMBLY



SECTION C-C



SECTION D-D



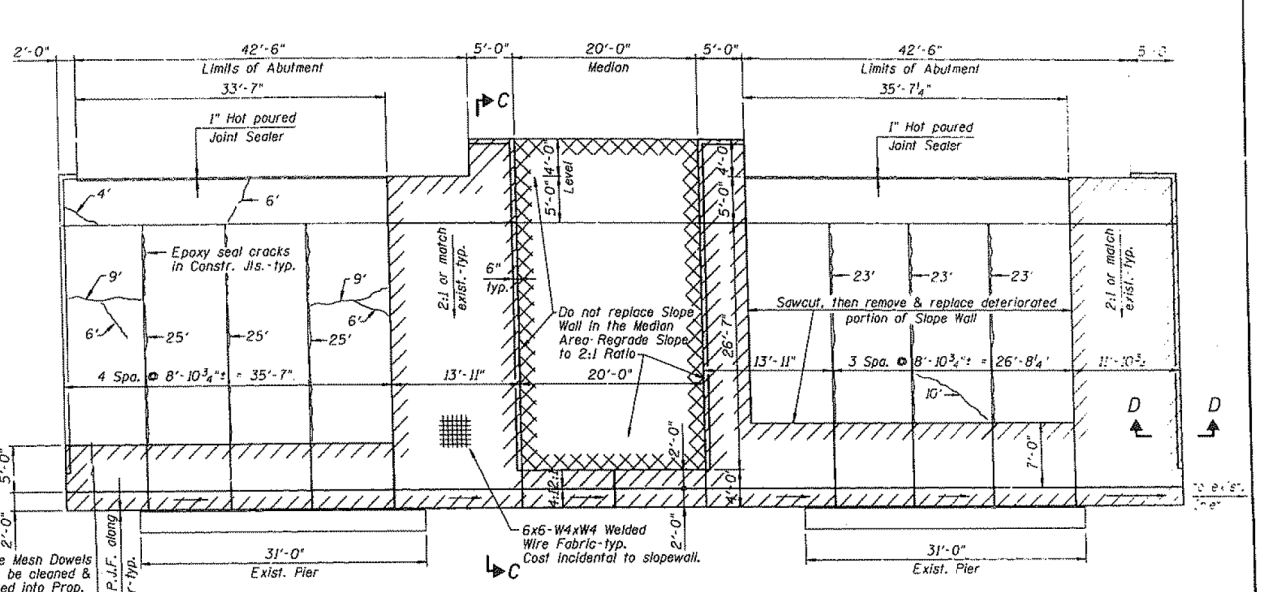
SECTION E-E

BILL OF MATERIAL

Item	Unit	Total
Elastomeric Bearing Assembly, Type I	Each	36

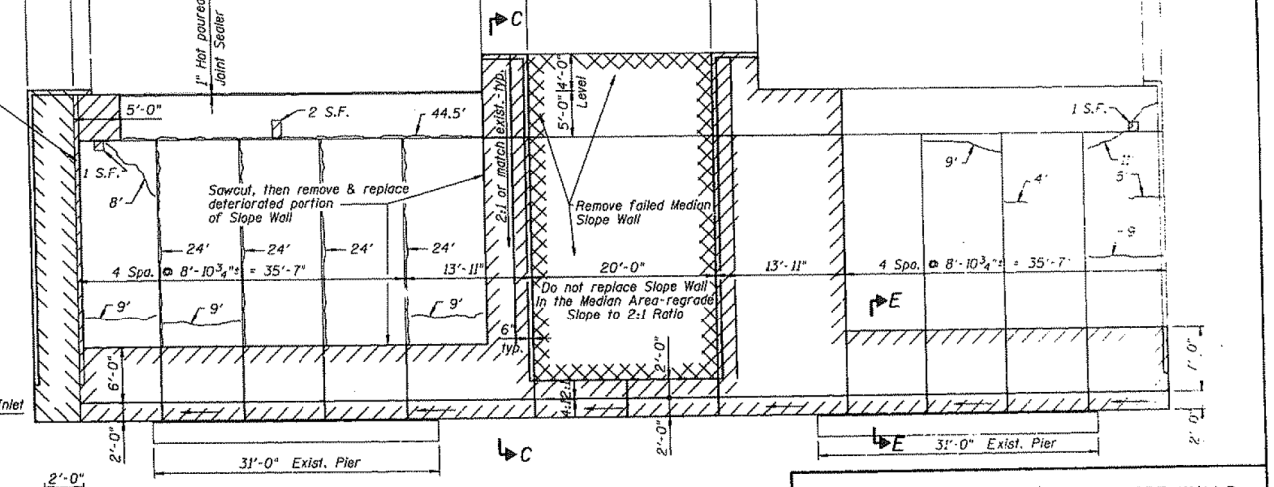
BILL OF MATERIAL

Item	Unit	Total
Slope Wall Removal	Sq. Yd.	519.2
Slope Wall 4 Inch	Sq. Yd.	405.7
Joint Sealer	Lin. Ft.	519



S. ABUTMENT N.B.

S. ABUTMENT S.B.



N. ABUTMENT S.B.

SLOPE WALL REPAIR & REPLACEMENT

- Remove & Replace Exisit. Slope Wall
- 1" Hot Poured Joint Sealer
- Remove Exisit. Slope Wall
- Slope Wall 4 Inch

**ELASTOMERIC BEARINGS AND SLOPE WALLS**  
 BRIDGE REHABILITATION ILLINOIS ROUTE 171  
 NORTHBOUND & SOUTHBOUND  
 OVER 47TH STREET  
 FAU 2746 SECTION 102-683 HBK  
 STATION 104+82.77  
 COOK COUNTY  
 STRUCTURE NO. 016-1001 N.B.  
 STRUCTURE NO. 016-1000 S.B.

**BOWMAN, BARRETT & ASSOCIATES INC.**  
 CONSULTING ENGINEERS  
 333 N. MICHIGAN AVENUE SUITE 2300 CHICAGO, ILLINOIS 60601  
 JOB NO. 024