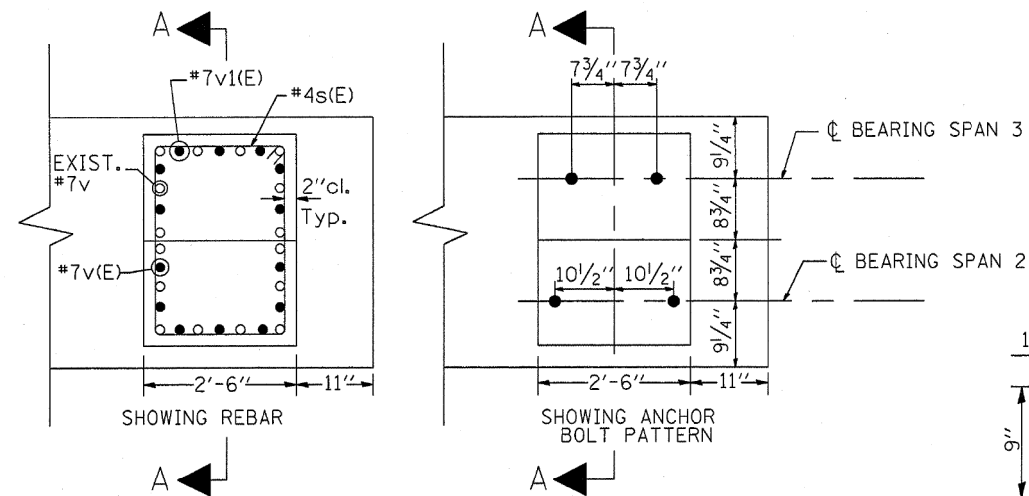


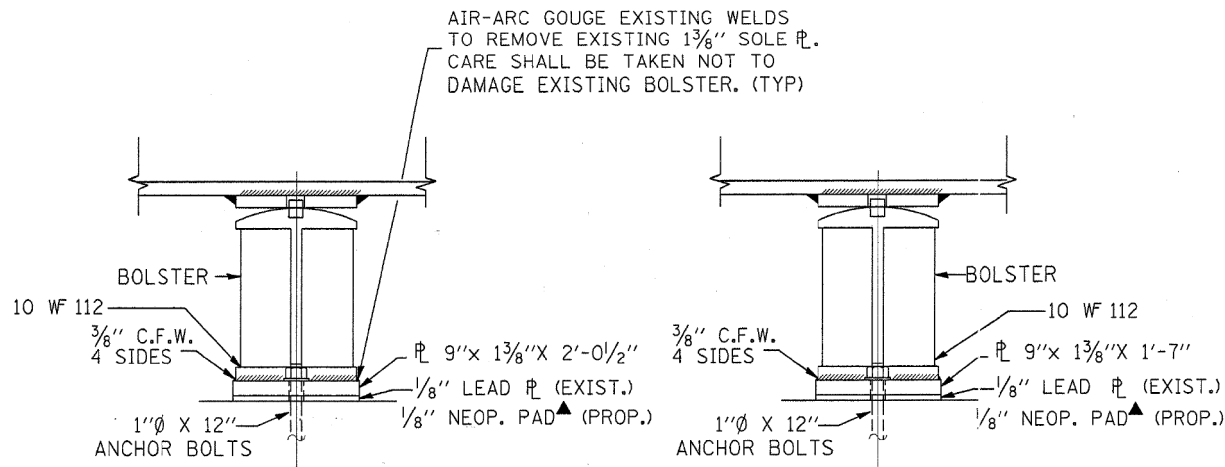
SECTION A-A



DETAIL A
PLAN VIEW

* DRILL & EPOXY GROUT 9" MINIMUM INTO THE EXISTING CONCRETE ACCORDING TO ART. 584 OF THE STD. SPECS.

▲▲ CLEAN, STRAIGHTEN & INCORPORATE EXISTING VERTICAL REINFORCEMENT INTO NEW CONSTRUCTION.



ELEVATION
AT PIER 2 SPAN 2

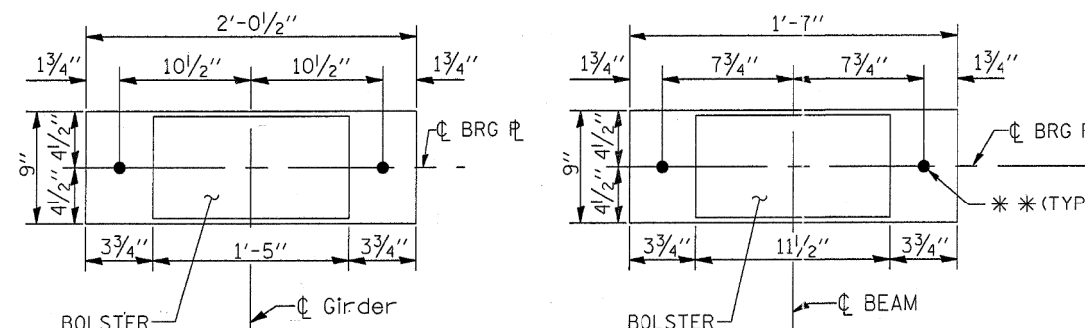
ELEVATION
AT PIER 2 SPAN 3

▲ New 1/8" elastomeric neoprene leveling pad according to Article 1052.02 of the Standard Specifications. Cost included with Structural Steel.

BAR LIST

| BAR | NO | SIZE | LENGTH | SHAPE |
|-------|----|------|--------|-------|
| s(E) | 3 | #4 | 9'-10" | |
| v(E) | 7 | #7 | 1'-7" | |
| v1(E) | 7 | #7 | 1'-10" | |

REINFORCEMENT BARS DESIGNATED (E) SHALL BE EPOXY COATED



AT PIER 2 SPAN 2

AT PIER 2 SPAN 3

PLAN VIEW
SHOWING SOLE PLATE

* * 1/2" Ø HOLES FOR 1" Ø ANCHOR BOLTS
2 1/2" X 2 1/2" X 5/16" PL WASHERS UNDER NUT.

NOTE:

REMOVE EXIST. SOLE-PLS, LEAD PLS AND ANCHOR BOLTS. COST OF REMOVAL INCLUDED IN THE COST OF CONCRETE REMOVAL. INSTALL NEW SOLE PLS, 1/8" NEOP. PADS & ANCHOR BOLTS WITH PL WASHERS & NUTS.

PRIOR TO ORDER ANY MATERIAL, THE CONTRACTOR SHALL VERIFY IN THE FIELD ALL BEARING HEIGHT AND SHIM THICKNESS DIMENSIONS

SHEET 3 OF 3

| | | | |
|--|-------------------|------------|-----------|
| FILE NAME = c:\projects\dl20587\11171e47th.dgn | USER NAME = mdjja | DESIGNED - | REVISED - |
| | | DRAWN - | REVISED - |
| | | CHECKED - | REVISED - |
| | | DATE - | REVISED - |

STATE OF ILLINOIS
DEPARTMENT OF TRANSPORTATION

LOCATION 1: SN 016-1000
STRUCTURAL DETAILS SHEET 3 OF 4

| | | | | |
|---|-----------|---------|--------------------|-----------|
| F.A.P. RTE. | SECTION | COUNTY | TOTAL SHEETS | SHEET NO. |
| VARIOUS | 2007-007I | VARIOUS | 25 | 9 |
| FED. ROAD DIST. NO. 1 ILLINOIS FED. AID PROJECT | | | CONTRACT NO. 60C36 | |

benesch
engineers · scientists · planners
Alfred Benesch & Company
205 North Michigan Avenue, Suite 2400
Chicago, Illinois 60601
312-565-0450 Job No. 10093

| | | | |
|---|----------------------|----------------|-----------|
| FILE NAME = 0161000.60J16.065.existplan.dgn | USER NAME = tjenicke | DESIGNED - FSM | REVISED - |
| | | CHECKED - RMM | REVISED - |
| | | DRAWN - FSM | REVISED - |
| | | CHECKED - RMM | REVISED - |

STATE OF ILLINOIS
DEPARTMENT OF TRANSPORTATION

EXISTING PLAN INFORMATION (25 OF 25)
STRUCTURE NO. 016-1000/1001

FOR INFORMATION ONLY

| | | | | |
|---------------------------|-------------|--------|--------------------|-----------|
| F.A.P. RTE. | SECTION | COUNTY | TOTAL SHEETS | SHEET NO. |
| 372 | 2013-038B-R | COOK | 821 | 313 |
| ILLINOIS FED. AID PROJECT | | | CONTRACT NO. 60J16 | |

X:\1000005\100093\Eng_Docs_Phase_1\11\SN_016-1000-1001-1st_Ave_over_47th_St\Final\0161000-60J16-065-existplan.dgn 2:33:52 PM 6/23/2014