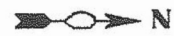


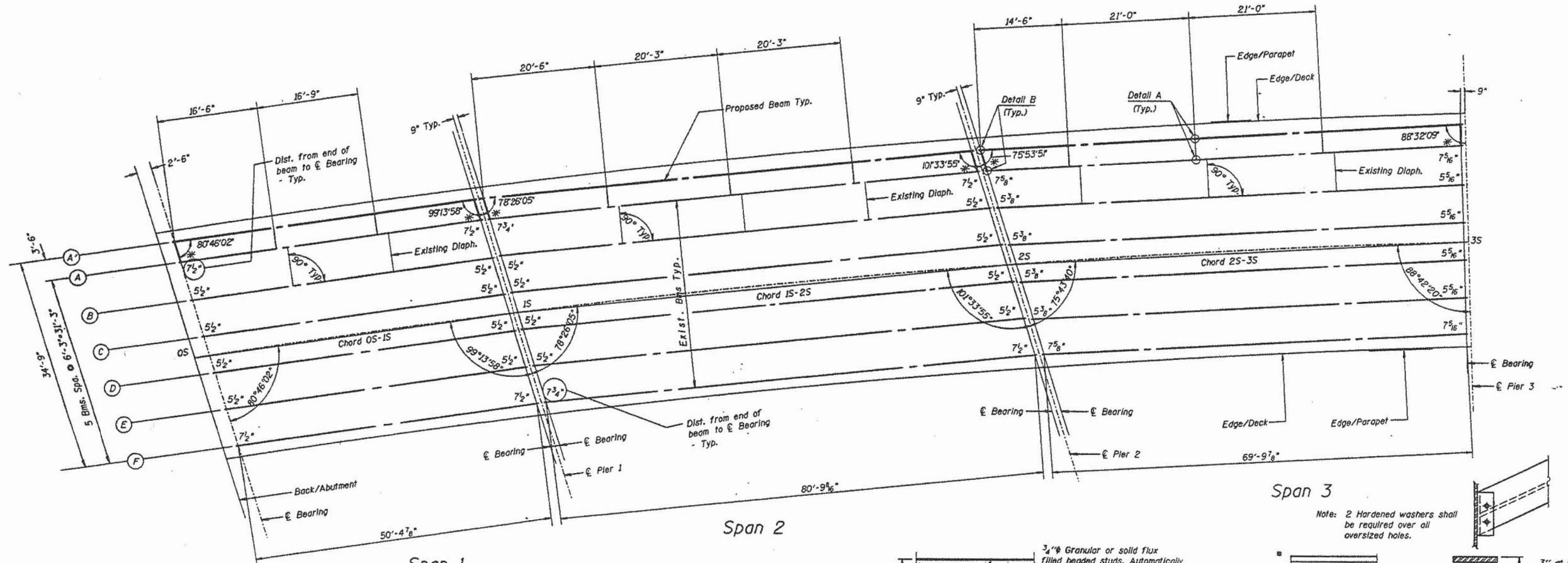
ROUTE NO.	SECTION	COUNTY	TOTAL SHEETS	SHEET NO.
S.B. 1.	606-628VB	COOK	703	116
F.A.U. 2746				
FED. ROAD DIST. NO. 7	ILLINOIS	FED. AID PROJECT		

SHEET NO. S-11  
SHEETS S-48

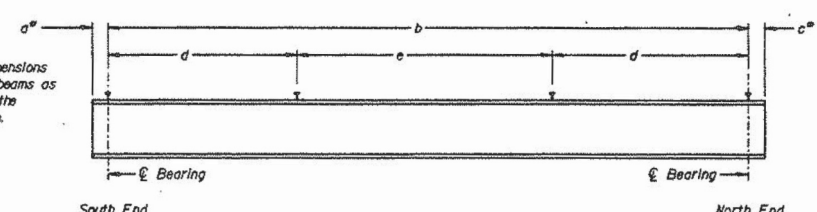


Note: For new beam table of Moments and Shears, see next sheet.

Contractor shall exercise extreme care to not damage the existing beams during removal of the concrete deck.  
Saw cutting of existing slab over stringers will not be allowed.



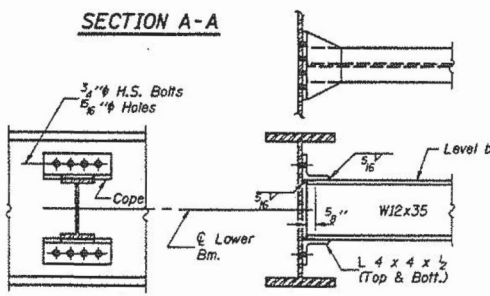
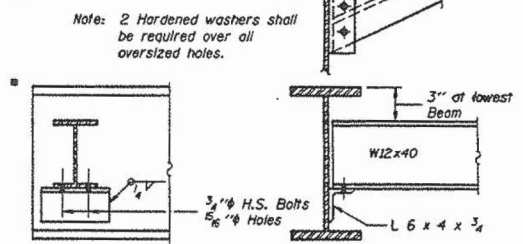
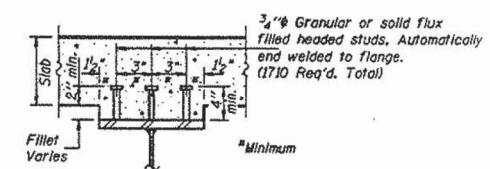
\*'a' & 'c' Dimensions for existing beams as indicated on the Framing Plan.



**NEW BEAM DATA**

Span	Bm Size	a	b	c	d	e	Top of Steel		Bearing Ht.		End Diaphragm Length	
							South	North	South	North	South	North
1	W33x118	7 1/2"	50'-4 1/2"	7 1/2"	25 @ 8 1/2"	14 @ 1'-1 1/2"	637.94	637.81	E 3 1/2"	F 1'-1 1/2"	3'-6 1/2"	3'-6 1/2"
2	W33x221	7 1/2"	80'-9 1/2"	7 1/2"	25 @ 10"	32 @ 1'-3"	637.81	637.60	E 4 1/2"	F 1'-2"	3'-6 1/2"	3'-6 1/2"
3	W33x221	7 1/2"	79'-4"	7 1/2"	25 @ 10"	31 @ 1'-3"	637.60	637.42	E 4 1/2"	F 1'-2"	3'-7 1/2"	3'-6"
4	W33x221	7 1/2"	81'-11 1/2"	8 1/2"	25 @ 10"	33 @ 1'-3"	637.41	637.22	F 1'-2"	E 4 1/2"	3'-6"	3'-10 1/2"
5	W27x178	10"	66'-9 1/2"	7 1/2"	37 @ 7 1/2"	21 @ 1'-0"	637.21	637.03	F 1'-2"	E 4 1/2"	3'-9 1/2"	4'-0 1/2"
6	W27x84	8 1/2"	50'-5 1/2"	7 1/2"	25 @ 6 1/2"	27 @ 10 1/2"	637.03	636.93	F 1'-1 1/2"	E 3 1/2"	3'-11 1/2"	3'-11 1/2"

Notes:  
All new beams shall have 3/4" x 4" shear studs, 3 across. Top of Steel elevations are for fabrication use only. Contractor shall leave existing studs in place, inspecting them for possible damage.  
See Section A-A.  
All new end diaphragms are W12x40.  
New intermediate diaphragms are W12x35, 3'-6" long.



Note: 2 Hardened washers shall be required over all oversized holes.  
End diaphragm connection to existing beam: In lieu of the weld shown above, the angle shall be bolted to the web. The existing bolts shall be removed, and the hole pattern shall be drilled into the new angle. Attach the existing and proposed angles back-to-back using 3/4" H.S. bolts

DESIGNED	JAA
CHECKED	ELD
DRAWN	JAA
CHECKED	ELD

**BOWMAN, BARRETT & ASSOCIATES INC.**  
CONSULTING ENGINEERS  
321 N. MICHIGAN AVENUE SUITE 200 CHICAGO, ILLINOIS 60610  
JOB NO. 124

**FRAMING PLAN SPANS 1, 2, & 3**  
BRIDGE REHABILITATION ILLINOIS ROUTE 171  
SOUTHBOUND  
OVER JOLIET RD. & AT&SF R.R.  
FAU 2746 SECTION 606-628 VB  
STATION 77+49.4  
COOK COUNTY  
STRUCTURE NO. 016-1005 S.B.

FOR INFORMATION ONLY

**benesch**  
engineers · scientists · planners  
Alfred Benesch & Company  
205 North Michigan Avenue, Suite 2400  
Chicago, Illinois 60601  
312-565-0450 Job No. 10093

FILE NAME =	USER NAME =	DESIGNED -	CHECKED -	DRAWN -	CHECKED -
016-1005-60J16-012-framing plan1.dgn	tjenicke	CMK	JAW	CMK	JAW
		REVISED -	REVISED -	REVISED -	REVISED -

STATE OF ILLINOIS  
DEPARTMENT OF TRANSPORTATION

EXISTING PLAN INFORMATION 6 OF 7  
STRUCTURE NO. 016-1005

F.A.P. R.T.E.	SECTION	COUNTY	TOTAL SHEETS	SHEET NO.
372	2013-038B-R	COOK	821	325
CONTRACT NO. 60J16			ILLINOIS FED. AID PROJECT	

SHEET NO. SBX6 OF SBX7 SHEETS

X:\100005\10093\Eng\_Docs\_Phase\_1\1N\_016\_1005\_1006\_1st\_Ave\_over\_Joliet\_Rd\Final\Plans\016-1005-60J16-012-framing plan1.dgn 2:36:13 PM 6/23/2014