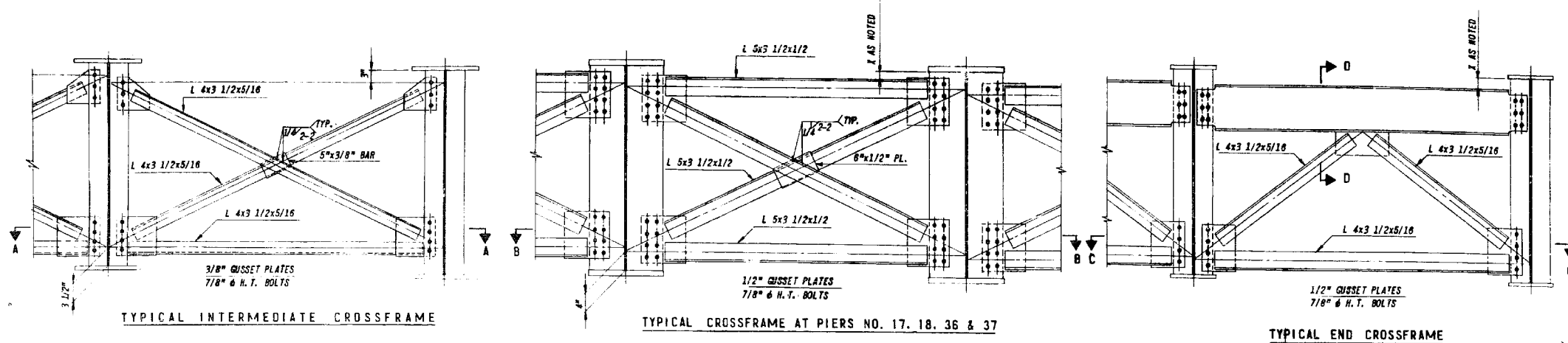


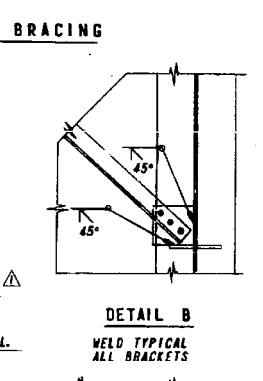
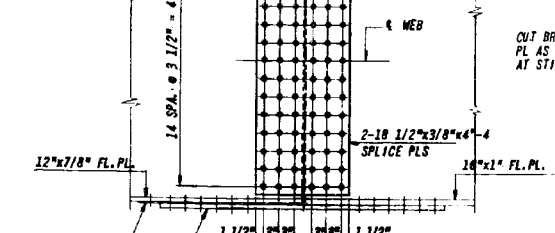
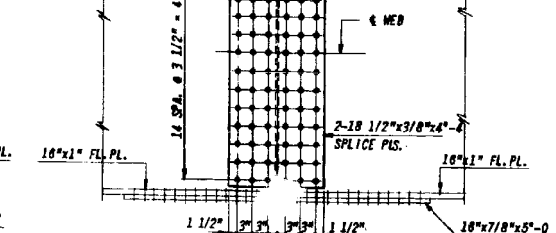
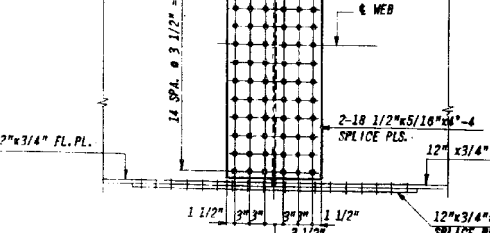
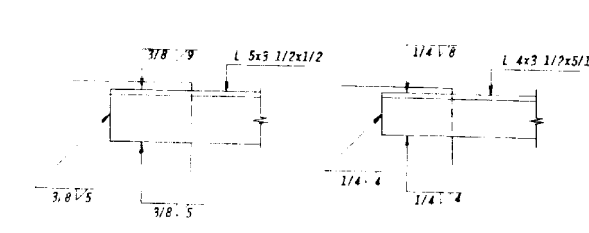
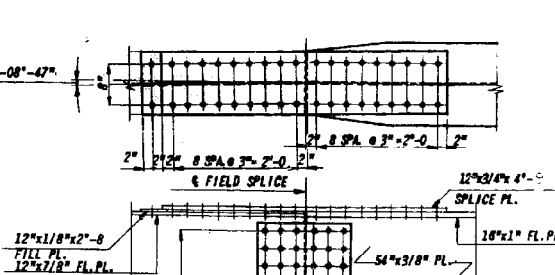
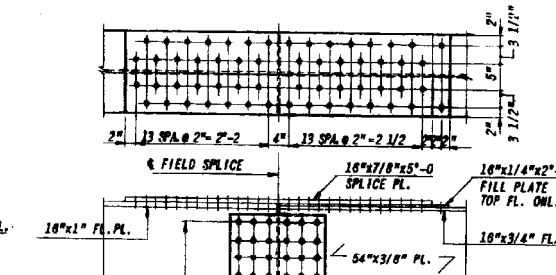
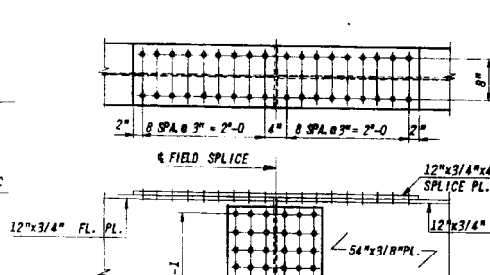
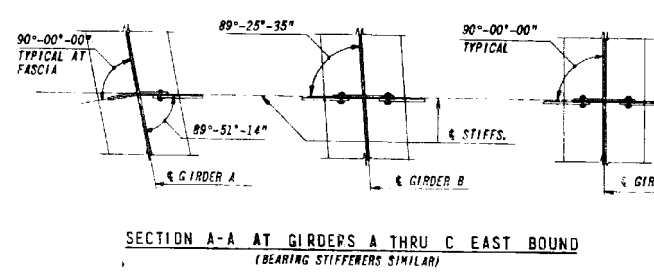
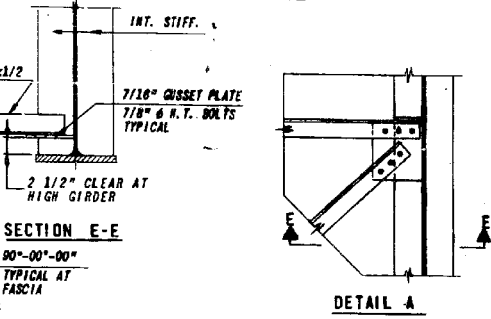
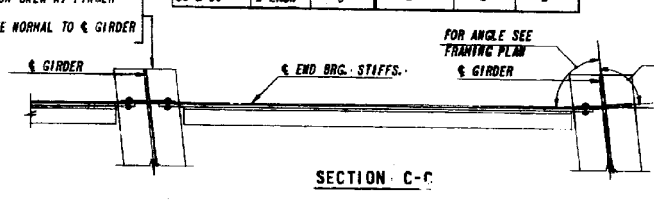
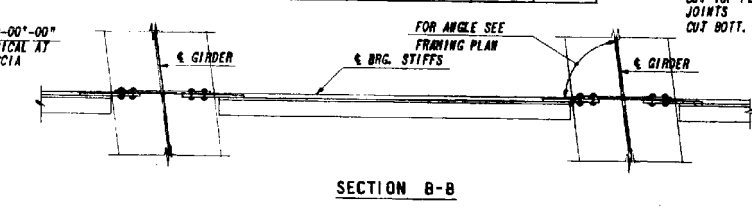
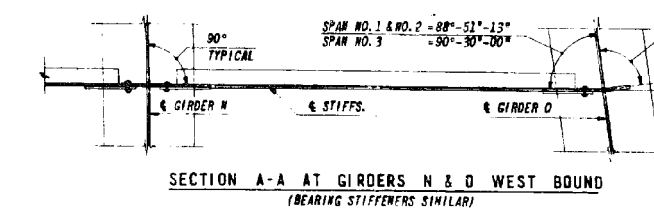
F.A. SHEET NO.	SECTION	EXPRESSWAYS	TOTAL SHEETS	SHEET NO.
133	0606-627 VB	SOUTHWEST		36A
STA	TO STA			
FED. ROAD DIST. NO. 7	ILLINOIS	FED. AID PROJECT		



EAST BOUND		WEST BOUND	
TYPE	REQ'D	TYPE	REQ'D
C12	80	C50	55
C13 THRU C36	1 EACH	C51 THRU C62	1 EACH

EAST BOUND		WEST BOUND			
TYPE	REQ'D	X	TYPE	REQ'D	X
C7	4	4"	C45	4	4"
C8 & C9	1 EACH	8 1/2"	C46 & C47	1 EACH	8 1/2"
C10 & C37	1 EACH	4"	C48	4	4"
C11	4	4"	C49 & C63	1 EACH	8 1/2"
C38 & C39	1 EACH	8 1/2"			

EAST BOUND		WEST BOUND			
TYPE	REQ'D	X	TYPE	REQ'D	X
C1	4	3"	C40	4	3"
C2	1	3"	C41 & C42	1 EACH	6"
C3	5	3"	C43	5	3"
C4	2	3"	C44	1	3"
C5 & C6	1 EACH	6"			



NOTE: 7/8\"/>

**AS BUILT**  
 This sheet (36A) replaces sheet (36) of the contract drawings. All revisions were made by the consultant.  
 R.R.E. 6-1-64

REVISIONS	
NAME	DATE

ILLINOIS DIVISION OF HIGHWAYS  
 SOUTHWEST EXPRESSWAY

F.A. RT. 133  
 LAWNDALE AVE STRUCTURE OVER  
 A.T. & S.F. RY. C.I.W. R.R. & O.C.T. R.R.  
 SECTION 0606-627 VB  
 STRUCTURAL STEEL DETAILS

SCALE: HORIZ. 3/4"=1'-0"  
 VERT. 1/4"=1'-0"

DATE 11-20-63

DRAWN BY D.U.  
 CHECKED BY L.B.

**benesch**  
 engineers - scientists - planners

Alfred Benesch & Company  
 205 North Michigan Avenue, Suite 2400  
 Chicago, Illinois 60601  
 312-565-0450 Job No. 10093

FILE NAME =	USER NAME = tjenicke	DESIGNED - RDK	REVISED -
0162455.60J16.045.existplan.dgn		CHECKED - JDM	REVISED -
		DRAWN - MAK	REVISED -
		CHECKED - JDM	REVISED -

STATE OF ILLINOIS  
 DEPARTMENT OF TRANSPORTATION

EXISTING PLAN INFORMATION (10 OF 14)  
 STRUCTURE NO. 016-2455  
 SHEET NO. SCX10 OF SCX14 SHEETS

FOR INFORMATION ONLY

F.A.P. RTE.	SECTION	COUNTY	TOTAL SHEETS	SHEET NO.
372	2013-038B-R	COOK	821	371
CONTRACT NO. 60J16			ILLINOIS FED. AID PROJECT	

X:\100005\10093\Eng\_Docs\_Phase\_1\11\SN\_016\_2454\_2455\_1st\_Ave\_cover\_AT&SF\_PRR\Final\0162455-60J16\_045\_existstplan.dgn 2:38:42 PM 6/23/2014