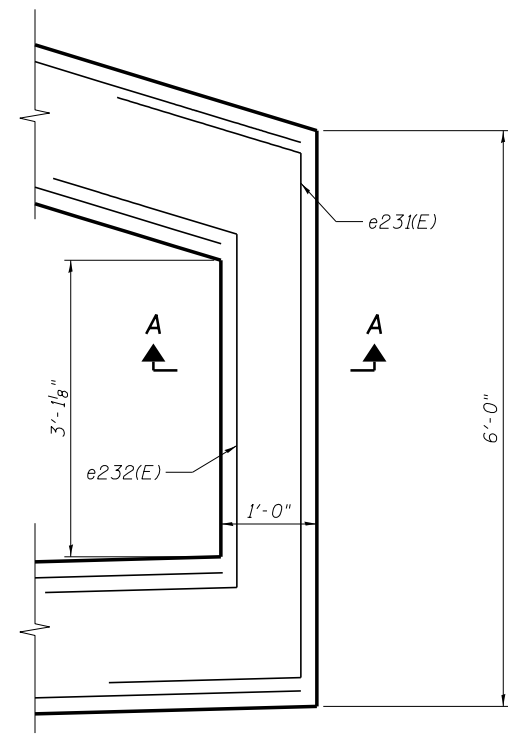


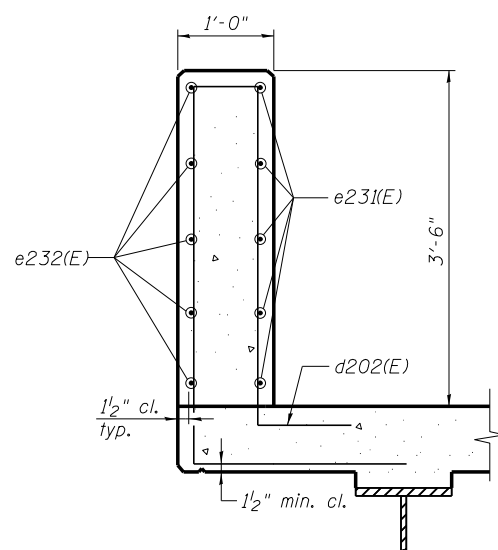
SECTION THRU PARAPET

Location	A	B	C
Typical, unless noted below	9 1/2"	4'-7"	5"
Ramp E West Parapet Pier 40 to Pier 39	10"	4'-7 1/2"	5"
Ramp E West Parapet Pier 39 to Pier 7	12"	4'-9 1/2"	5"
Ramp E East Parapet Pier 41 to Pier 40	12"	4'-9 1/2"	5"
Ramp E East Parapet Pier 40 to Pier 39	11"	4'-8 1/2"	5"
Unit C West Parapet Pier 7 to Pier 8	11"	4'-8 1/2"	5"
Unit A & Unit E	9 1/2"	4'-6"	4"

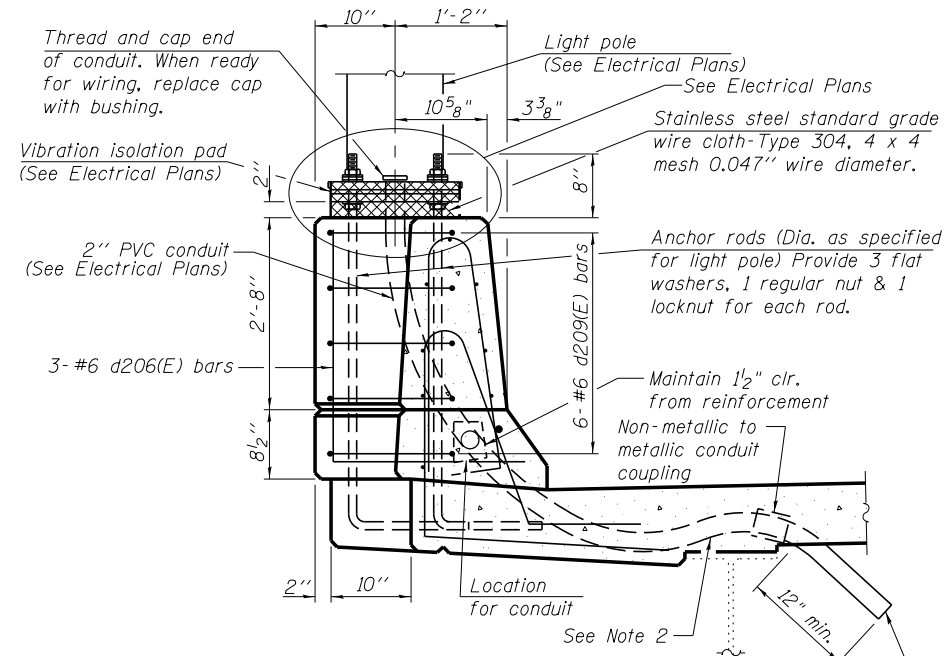
* See Deck Plans and Cross Sections for bar labeling



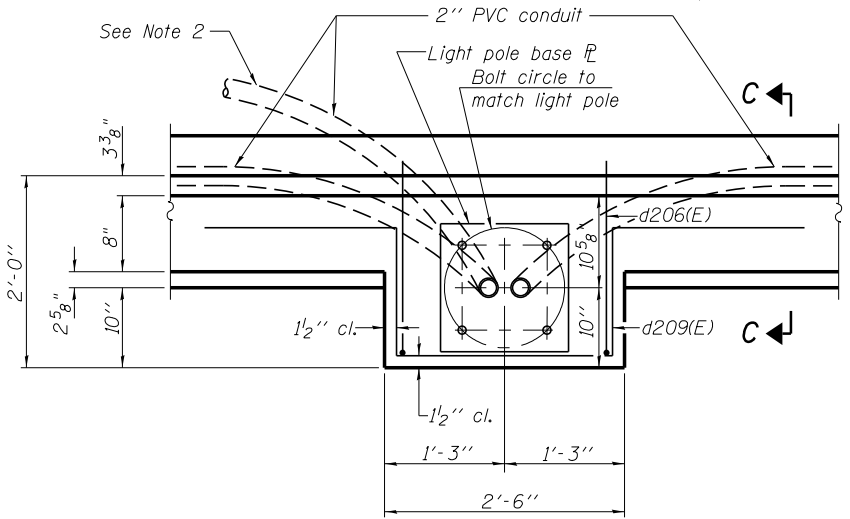
DETAIL 3
(See Sheet SD31)



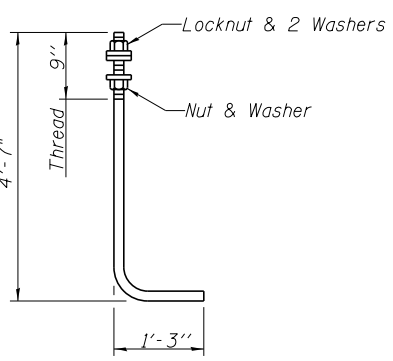
SECTION A-A



SECTION C-C



PLAN

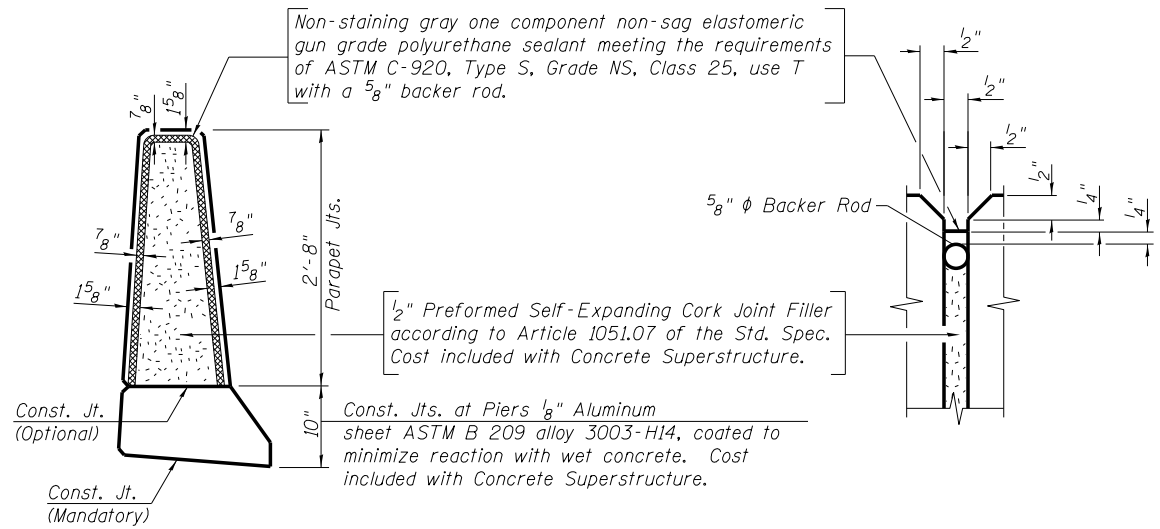


ANCHOR ROD

Diameter as specified for light poles.
(ASTM F 1554 Grade 105)
Full length hot dipped galvanized.

NOTES:

- Cost of anchor rods is included with "Concrete Superstructure".
- Conduit upstation from light pole at Sta. 54+49.25 is attached to bottom of deck. See Electrical Plans.



PARAPET JOINT DETAILS

benesch
engineers · scientists · planners
Alfred Benesch & Company
205 North Michigan Avenue, Suite 2400
Chicago, Illinois 60601
312-565-0450 Job No. 10093

FILE NAME =	USER NAME = ksnider	DESIGNED -	REVISD -
0162457.60J16.043.Parapet.Details.dgn		CHECKED -	REVISD -
	PLOT SCALE =	DRAWN -	REVISD -
	PLOT DATE = 12/20/2013	CHECKED -	REVISD -

STATE OF ILLINOIS
DEPARTMENT OF TRANSPORTATION

PARAPET DETAILS
STRUCTURE NO. 016-2457

SHEET NO. SD43 OF SD83 SHEETS

F.A.P. R.T.E.	SECTION	COUNTY	TOTAL SHEETS	SHEET NO.
372	2013-038B-R	COOK	821	418
CONTRACT NO. 60J16				
ILLINOIS FED. AID PROJECT				

Y:\chicago\100005\100093\Eng_Docs\Phase_1\1\SN_016-2456-2457-1st-Ave-over_Des_Plaines-River_Valley\Final\0162457-60J16-043-Parapet-Details.dgn 3:46:50 PM 8/6/2014